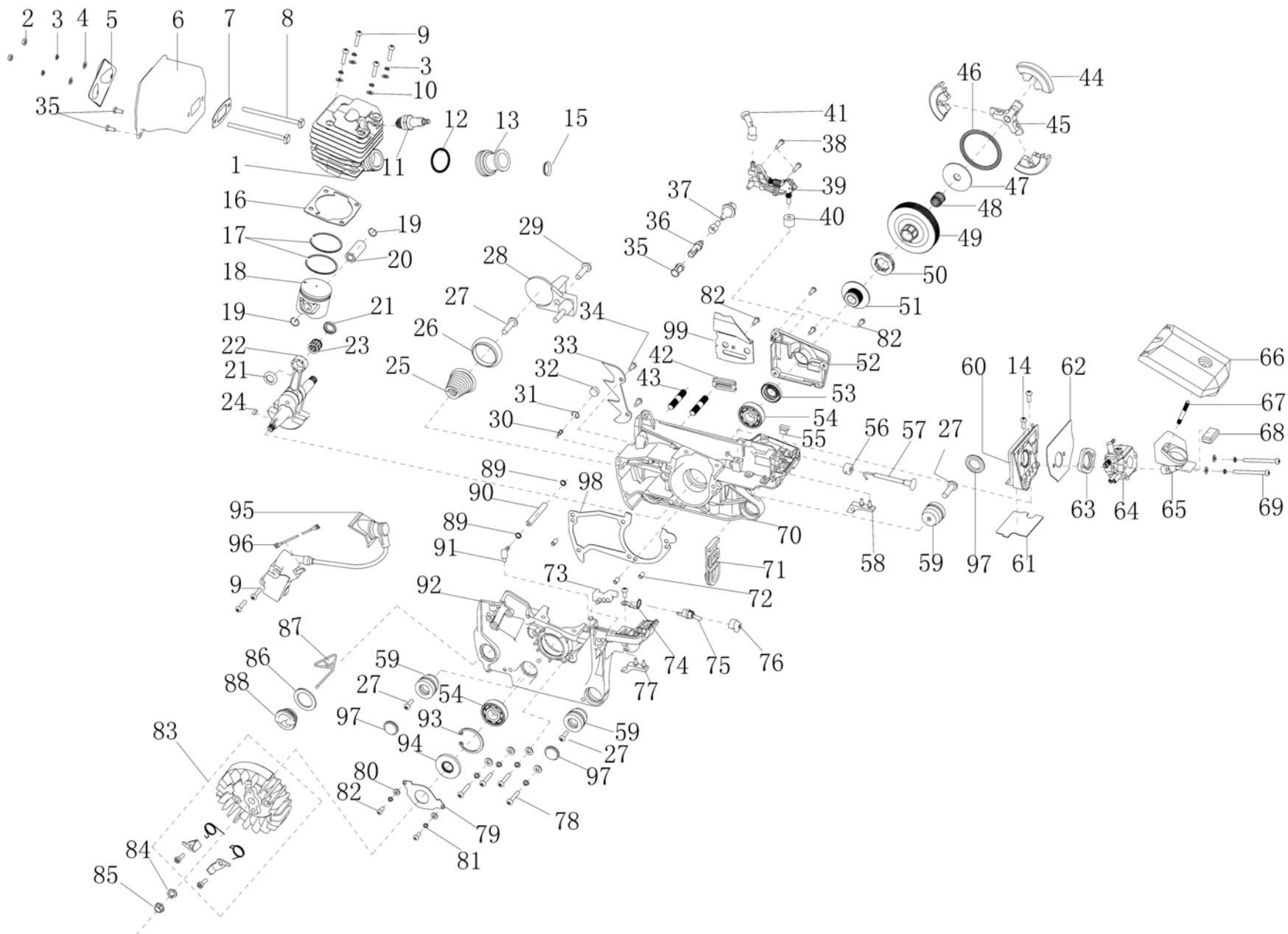


POS	QTY	PARTNUMBER	BESKRIVELSE	DESCRIPTION
1	1	413118	BREMSE KOMPLET	BRAKE
27	2	410970	FLANGEMØTRIK RUSTFRI A4 M8	STAINLESS COLLAR NUT M8
28	1	413119	FINGERSKRUE	FINGER SCREW
29	1	413120	PAKNING 15X26X1	GASKET 15X26X1
30	1	413121	LUFTFILTERDÆKSEL	LID
31	1	413122	JUSTERING	ADJUSTING
32	11	411667	MASKINSKRUE RUSTFRI M5X15	STAINLESS MACHINE SCREW M5X15
33	1	413123	DÆKSEL ØVRE	LID
34	1	413124	REKYLSTARTER KOMPLET	RECOIL STARTER
35	1	413125	PLADE	PLATE
45	1	413126	DÆMPER	MUFFLER
46	1	413127	BASE	BASE
47	1	413128	GUMMIDÆMPER	RUBBER MUFFLER
48	1	411667	MASKINSKRUE RUSTFRI M5X15	STAINLESS MACHINE SCREW M5X15
49	1	413129	PROP	PLUG
50	1	413130	HOLDER	HOLDER
51	1	413131	PAKNING 24X34X1.5	GASKET 24X34X1.5
52	2	413132	LÅG BRÆNDSTOF	LID
53	1	413133	SLANGE	HOSE
54	1	413134	FILTER	FILTER
55	1	413135	PROP	PLUG
56	1	413136	SLANGE	HOSE
57	2	413137	FILTER	FILTER
58	2	413138	DÆKSEL	LID
59	1	413139	FORBINDER	CONNECTOR
60	1	413140	TRIGGER	TRIGGER
61	1	413141	FJEDER	SPRING
62	1	413142	STIFT	PIN
63	1	413143	DÆKSEL	LID
64	1	413144	LÅS	LOCK
65	1	413145	STIFT 6X22	PIN 6X22
66	1	413146	BØJLE	RING
67	1	296050	PLADESKRUE MED SPIDS M5.5X16	PLATE SCREW M5.5X16
70	1	296039	PLADESKRUE M4.8X16	PLATE SCREW M4.8X16



POS	QTY	PARTNUMBER	BESKRIVELSE	DESCRIPTION
1	1	413147	CYLINDER	CYLINDER
2	2	410976	MØTRIK RUSTFRI A4 M5	STAINLESS NUT M5
3	15	410941	PLANSKIVE RUSTFRI A4 M5	STAINLESS FACE PLATE M5
4	2	410941	PLANSKIVE RUSTFRI A4 M5	STAINLESS FACE PLATE M5
5	1	413148	PLADE FOR UDSØDNING	PLATE
6	1	413149	UDSØDNING	EXHAUST
7	1	413150	PAKNING	GASKET
8	2	403277	STÅLBOLT MED SKAFT OG FIRKANTET HOVEDE M5X84	STEEL BOLT M5X84
9	6	411668	MASKINSKRUE RUSTFRI M5X20	STAINLESS MACHINE SCREW M5X20
10	11	410941	PLANSKIVE RUSTFRI A4 M5	STAINLESS FACE PLATE M5
11	1	413151	TÆNDRØR NHSP LD L8RTF	SPARK PLUG NHSP LD L8RTF
12	1	413152	PAKNING	GASKET
13	1	413153	INDSUGNING	AIR INTAKE TUBE
14	2	411666	MASKINSKRUE RUSTFRI M5X10	STAINLESS MACHINE SCREW M5X10
15	1	413154	PROP	PLUG
16	1	413155	CYLINDERPAKNING	CYLINDER SEALING PLATE
17	2	413156	STEMPELRING	PISTON RING
18	1	413157	STEMPEL	PISTON
19	2	413158	LÅSERING	LOCKING RING
20	1	413159	KRYDSPIND	CROSSHEAD TUBE
21	2	413160	LÅSERING	LOCKING RING
22	1	413161	KRUMTAP MED PEJLESTANG	CRANK
23	1	413162	NÅLEKRANS 11X15X12.5	NEEDLE COLLAR 11X15X12.5
24	1	413163	NOT 3X3.5X10	KEY 3X3.5X10
25	1	413164	FJEDER	SPRING
26	1	413165	BASE	BASE
27	4	296050	PLADESKRUE MED SPIDS M5.5X16	PLATE SCREW M5.5X16
28	1	413166	KÆDEFANGER	CHAIN CATCHER
29	1	411195	FLANGEBOLT RUSTFRI M5X15	STAINLESS COLLAR BOLT M5X15
30	1	413167	DYSE	NOZZLE
31	1	413168	LÅSERING	LOCKING RING
32	1	413169	BØS	BUSHING
33	1	413170	BARKSTED	BUMPER SPIKES
34	5	411194	FLANGEBOLT RUSTFRI M5X10	STAINLESS COLLAR BOLT M5X10
35	1	413171	FILTERHUS	FILTER
36	1	413172	OLIEFILTER	FILTER
37	1	413173	RØR	TUBE
38	2	411187	FLANGEBOLT RUSTFRI M4X14	STAINLESS COLLAR BOLT M4X14
39	1	413174	OLIEPUMPE	OIL PUMP
40	1	413175	DÆMPER	MUFFLER
41	1	413176	DYSE	NOZZLE
42	1	413177	STYREBLOK	CHAIN GUIDE BLOCK
43	2	413178	PINBOLT M8-M8X26-8.8	PIN BOLT M8-M8X26-8.8
44	3	413179	KOBLINGSSKO	CLUTCH SHOE
45	1	413180	KRYDS	RETAINER

POS	QTY	PARTNUMBER	BESKRIVELSE	DESCRIPTION
46	1	413181	RING	RING
47	1	413182	PLADE	PLATE
48	1	413183	NÅLEKRANS 12X15X14.5	NEEDLE COLLAR 12X15X14.5
49	1	413184	TANDHJUL	SPROCKET
50	1	413185	DRIVHJUL	SPROCKET
51	1	413186	TURBINE	TURBINE
52	1	413187	DÆKSEL	LID
53	1	413188	PAKDÅSE 15X28X4.5	OIL SEAL 15X28X4.5
54	1	403317	KUGLELEJE 6202 15X35X11	BALL BEARING 6202 15X35X11
55	1	413189	DÆMPER	MUFFLER
56	1	413190	BESLAG	BRACKET
57	1	413191	GASARM	THROTTLE LEVER
58	1	413192	BLOK	BLOCK
59	3	413193	DÆMPER	MUFFLER
60	1	413194	STØTTE FOR LUFTFILTER	SUPPORT
61	1	413195	PLADE	PLATE
62	1	413196	PAKNING	GASKET
63	1	413197	ISOLATOR	INSULATOR
64	1	413198	KARBURATOR	CARBURETTOR
65	1	413199	INDSUGNINGSSTUDS	NOZZLE PIPE
66	1	413200	LUFTFILTER	AIR FILTER
67	1	413201	PINDBOLT M5-M5X30	DOUBLE-SCREW BOLT GM5-M5X30
68	1	413202	STØTTE	SUPPORT
69	2	411674	MASKINSKRUE RUSTFRI M5X50	STAINLESS MACHINE SCREW M5X50
70	1	413203	KRUMTAPHUS HØJRE	CRANKCASE
71	1	413204	PLADE	PLATE
72	3	413145	STIFT 6X22	PIN 6X22
73	1	413205	DÆMPER	MUFFLER
74	1	413206	BESLAG	BRACKET
75	1	413207	KONTAKT	SWITCH
76	1	413208	FORLÆNGER	EXTINCTION SWITCH SOCKET
77	1	413209	BLOK	BLOCK
78	5	411669	MASKINSKRUE RUSTFRI M5X25	STAINLESS MACHINE SCREW M5X25
79	1	413210	PLADE	PLATE
80	2	410940	PLANSKIVE RUSTFRI A4 M4	STAINLESS FACE PLATE M4
81	2	410940	PLANSKIVE RUSTFRI A4 M4	STAINLESS FACE PLATE M4
82	6	411658	MASKINSKRUE RUSTFRI M4X10	STAINLESS MACHINE SCREW M4X10
83	1	413211	SVINGHJUL	FLYWHEEL
84	1	410961	FJEDERSKIVE RUSTFRI A4 M8	STAINLESS SPRING COLLAR M8
85	1	413212	MØTRIK M8X1	NUT M8X1
86	1	413213	PAKNING 20X30X2	GASKET 20X30X2
87	1	413214	HOLDER	HOLDER
88	1	413215	LÅG OLIE	LID
89	2	413216	LÅSERING	LOCKING RING
90	1	413217	SLANGE 2.5X7X105	HOSE 2.5X7X105

POS	QTY	PARTNUMBER	BESKRIVELSE	DESCRIPTION
91	1	413218	DYSE	NOZZLE
92	1	413219	KRUMTAPHUS VENSTRE	CRANKCASE
93	1	411008	SEEGERRING UDVENDIG RUSTFRI U35	STAINLESS EXTERNAL RETAINER RING U35
94	1	413220	PAKDÅSE 15X35X4.5	OIL SEAL 15X35X4.5
95	1	413221	TÆNDSPOLE	IGNITION COIL
96	1	413222	LEDNING	CABLE
97	3	413223	PROP	PLUG
98	1	413224	KRUMTAPHUSPAKNING	CASE BODY SEALING PLATE
99	1	413225	DÆMPER	MUFFLER