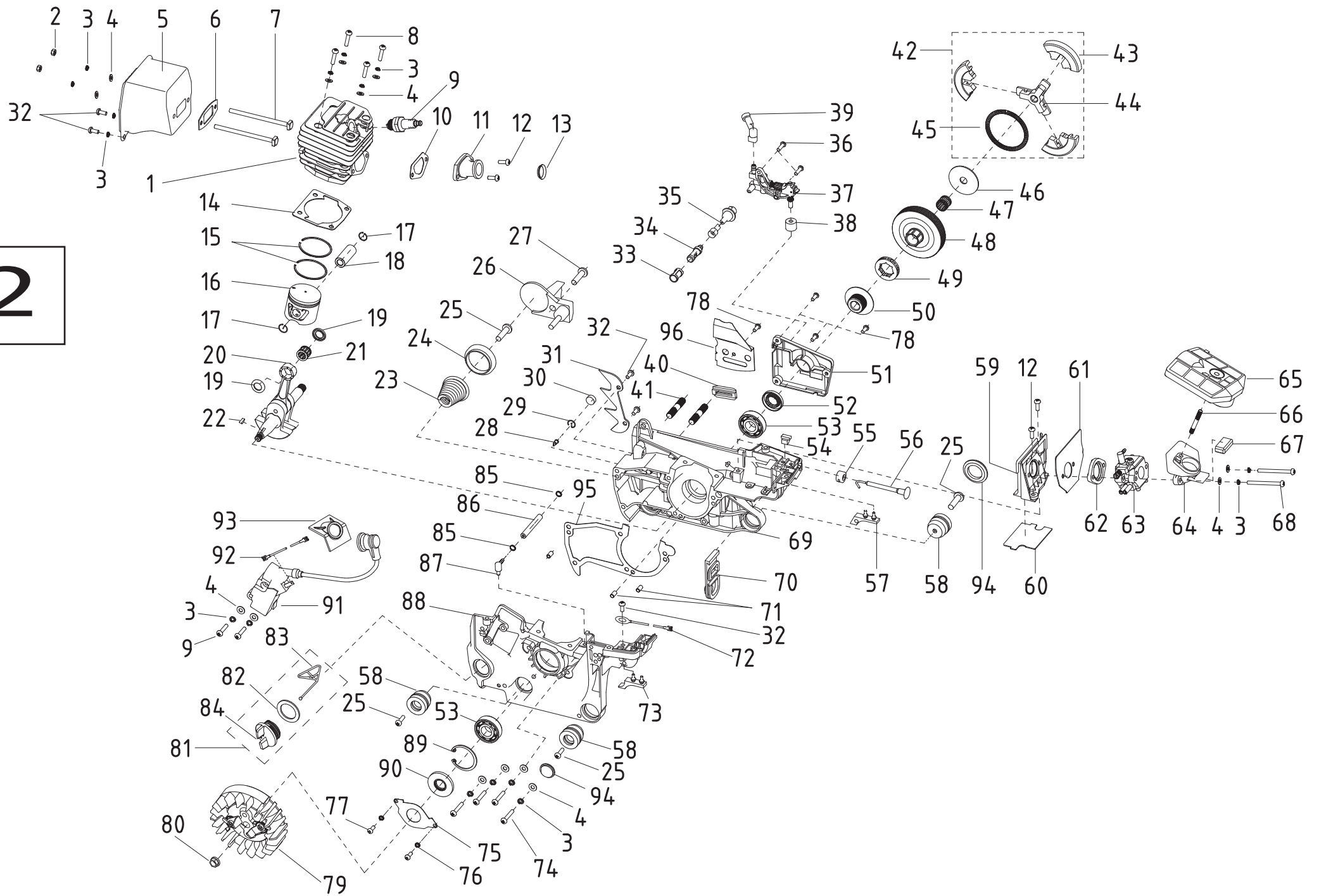


POS	QTY	PARTNUMBER	BESKRIVELSE	DESCRIPTION
1	1	434419	KÆDEBREMSE KOMPLET	RIGHT COVER ASSEMBLY
2	1	431965	SKRUE M5X40	SCREW M5X40
3	1	406151	BØS 5X6.3X30	BUSHING 5X6.3X30
4	1	406152	BØS 6.3X9X15	BUSHING 6.3X9X15
5	1	413145	STIFT 6X40	PIN 6X40
6	1	434420	STRAMMESKRUE	TIGHTENER SCREW
7	1	434317	KÆDESTRAMMER MØTRIK	TENSION BLOCK
8	1	434421	COVER PLADE	TENSIONER COVER PLATE
9	4	403211	SKRUE	SCREW
10	1	434422	HÅNDTAG FOR KÆDEBREMSE	FRONT DAMPER
11	1	406156	FJEDER	SPRING
12	1	406157	PLANSKIVE 5.2X23X1.3	FACE PLATE 5.2X23X1.3
13	1	90100660	MØTRIK M5	NUT M5
14	1	406158	FJEDERSÆDE	SPRING SEAT
15	1	406159	FJEDER	SPRING
16	1	406161	FØLER	SENSOR
17	1	406162	LED	JOINT
18	3	413145	STIFT 6X40	PIN 6X40
19	1	434423	BESLAG FOR BREMSEFJEDER	BRAKE CONTROL ROD
20	1	403204	FJEDER	SPRING
21	1	434424	BREMSEBÅND	BRAKE STRAP
22	1	434425	BREMSEFJEDER	SECONDARY BRAKE SPRING
23	1	434426	COVER FOR BREMSEBÅND	BRAKE SPRING COVER PLATE
24	1	434315	GEAR	TENSION GEAR
25	1	434427	KÆDESTYR	CHAIN GUIDE BLOCK
26	1	434428	DÆKSEL FOR KÆDETRÆK	RIGHT COVER
27	1	434429	STØVSKJOLD	DUST SHIELD
28	1	406155	FJEDER	SPRING
29	1	406154	BESLAG	BRACKET
30	2	403226	FLANGEMØTRIK M8	COLLAR NUT M8
31	1	434430	SKRUE FOR LUFTFILTER	AIR FILTER LOCK NUT
33	1	434431	LUFTFILTER COVER	AIR FILTER COVER
34	9	662082	MASKINSKRUE 5X14	MACHINE SCREW 5X14
35	1	434432	PLASTSKJOLD FOR MOTOR KOMPLET	UPPER COVER PLATE ASSEMBLY
35a	1	434433	PLASTCOVER ØVERSTE	UPPER COVER PLATE
35b	1	434434	ISOLATORPLADE	UPPER HEAT ISOLATION PLATE
35c	1	434435	SIDE ISOLATORPLADE	SIDE HEAT ISOLATION PLATE
36	1	434436	JUSTERBAR STILLESKRUE	IDLE ADJUSTING GUIDE SET
37	1	434437	FLOW COVER	GUIDE FLOW COVER
38	1	434438	REKYLSTART KOMPLET	STARTER ASSEMBLY
39	1	403211	SKRUE	SCREW
40	1	403215	SKIVE M6	WASHER M6
41	1	434439	STARTER PLADE	STARTER PALTE
42	1	434440	FJEDER FOR REKYLSTART	START COIL SPRING
43	1	434441	STARHÅNDTAG	START HANDLE
44	1	434442	STARTSNOR	START STRETCHING WIRE

POS	QTY	PARTNUMBER	BESKRIVELSE	DESCRIPTION
45	1	434443	STARTER COVER	STARTER COVER
46	1	434444	STØDDÆMPER	SHOCK RUBBER
47	1	434445	TANKHUS	BASE
48	2	434446	GUMMIBØS	SHOCK RUBBER GLAND
49	2	434447	SKRUE	SCREW
50	2	434448	STØVDÆKSEL	DUST COVER
51	1	434449	HOLDER FOR TANKLÅG	ANTI-DROP PLATE
52	1	434341	PAKNING 24.7×3.55	PACKING WASHER 24.7×3.55
53	1	434450	TANKLÅG BENZIN	FUEL CAP
54	1	434451	TANKLÅG KOMPLET	FUEL CAP ASSEMBLY
55	1	434452	BENZINSLANGE	FUEL TUBE
56	1	434453	BENZINSLANGE KLIPS	FUEL TUBE CIRCLIP
57	1	434454	FILTER	PETROL FILTER COMPONENTS
58	1	434337	FILTER	BALANCER BODY ASSEMBLY
59	1	413141	FJEDER	SPRING
60	1	434455	GASFJEDER	THROTTLE ROD
61	1	434456	GASARM	TRIGGER
62	1	413144	LÅS	LOCK
63	1	413145	STIFT 6X40	PIN 6X40
64	1	434457	BAGHÅNDTAG	HANDLE COVER
65	1	434458	SIKKERHEDSGREB	TRIGGER CONTROL RACK
66	1	403211	SKRUE	SCREW
67	1	406207	KONTAKT	SWITCH
68	1	434459	BØJLEHÅNDTAG	FRONT HANDLE ASSEMBLY
69	4	403211	SKRUE	SCREW
70	1	434460	DYSE	SCAVENGE NOZZLE
71	1	434461	BENZINSLANGE	PUMP TUBE
72	1	416400	PRIMER	PRIMER
73	1	434462	SAVKÆDE 20" 0,325"	SAW CHAIN
74	1	434463	SVÆRD	GUIDE BAR
75	1	434464	SVÆRDBESKYTTER	SCABBARD

2



POS	QTY	PARTNUMBER	BESKRIVELSE	DESCRIPTION
1	1	434465	CYLINDER	CYLINDER
2	2	434466	MØTRIK M5	NUT M5
3	15	403343	FJEDERSKIVE	SPRING COLLAR
4	15	403342	SKIVE 4	WASHER
5	1	434467	UDSTØDNING	MUFFLER BODY
6	1	434468	UDSTØDNINGSPAKNING	MUFFLER SEALING PLATE
7	2	434469	SKRUE FOR UDSØDNING	MUFFLER CONNECTING SCREW
8	6	427570	MASKINSKRUE M5X20	SCREW M5X20
9	1	413151	BRUG 10011022 NHSP LD L8RTF	SPARK PLUGS NHSP LD L8RTF
10	1	434470	PAKNING LUFTINDTAG	AIR INTAKE TUBE SEALING PLATE
11	1	434471	LUFTINDTAG	AIR INTAKE TUBE
12	4	11GB/T90744M5 X12	MASKINSKRUE SORT 5X12	MACHINE SCREW 5X12
13	1	434472	SPOLE	HOLD COIL
14	1	434473	CYLINDER PAKNING	CYLINDER SEALING PLATE
15	2	434474	STEMPELRING	PISTON RING
16	1	434475	STEMPEL	PISTON
17	2	434476	LÅSERING FOR KRYDSPIND	PISTON PIN CIRCLIP
18	1	434477	KRYDSPIN	PISTON PIN
19	2	434478	PAKDÅSE	NEEDLE BEARING RING
20	1	434479	KRUMTAP	CRANK SHAFT COMPONENTS
21	1	434480	NÅLELEJE 11X15X12,5 11X15X12,5	NEEDLE BEARING 11x15x12.5
22	1	413163	NOT 3X3.5X10	KEY 3X3.5X10
23	1	434481	FJEDEROPHÆNG	CONICAL SPRING BASE
24	1	434482	BASE FOR OPHÆNG	CONICAL SPREADER BASE
25	4	403211	SKRUE	SCREW
26	1	434483	KÆDEBESKYTTER	CHAIN SHIELD
27	1	11GB/T90744M5 X12	MASKINSKRUE SORT 5X12	MACHINE SCREW 5X12
28	1	434484	LUFTINDTAG	AERATION JET
29	1	434485	CLIPS	AERATION JET CIRCLIP
30	1	434486	BLOK	SPONGE TRANSITION BLOCK
31	1	413170	BARKSTED	BUMPER SPIKES
32	5	11GB/T90744M5 X12	MASKINSKRUE SORT 5X12	MACHINE SCREW 5X12
33	1	434487	OLIEFILTER YDER	OIL FILTER SCREEN
34	1	434488	OLIEFILTERINNER	OIL FILTER
35	1	434489	OLIESLANGE	OIL TUBE
36	2	662082	MASKINSKRUE 5X14	MACHINE SCREW 5X14
37	1	434490	OLIEPUMPE	OIL PUMP
38	1	434491	BØS	SPONGE TRANSITION COIL
39	1	434492	DYSE	NOZZLE
40	1	434427	KÆDESTYR	CHAIN GUIDE BLOCK
41	2	413178	PINBOLT M8-M8X26-8.8	PIN BOLT M8-M8X26-8.8
42	1	434493	KOBLING	CLUTCH
43	3	434494	KOBLINGSVÆGTKLODS	SHOE BLOCK
44	1	434495	MEDBRINGER	RETAINER
45	1	434496	KOBLINGSFJEDER	CLUTCH SPRING

POS	QTY	PARTNUMBER	BESKRIVELSE	DESCRIPTION
46	1	434497	SKIVE FOR KOBLING	CLUTCH ADJUSTING WASHER
47	1	434498	NÅLELEJE 12X15X14,5 12X15X14,5	NEEDLE BEARING 12x15x14.5
48	1	434499	KOBLINGSSKÅL	CLUTCH SHELL
49	1	434500	KÆDEDREV	SPROCKET
50	1	434501	BØSNING	WORM
51	1	434502	COVER PLADE	COVER PLATE
52	1	434503	PAKDÅSE 15X28X4,5 15X28X4,5	OIL SEAL 15x28x4.5
53	2	419754	KUGLELEJE 15X35X11	BALL BEARING 15X35X11
54	1	434504	BESLAG	CUSHION BLOCK
55	1	434505	BESLAG FOR CHOKER	CHOKE ROD FIXATION ROOT
56	1	434506	CHOKER	CHOKE ROD
57	1	434507	BESLAG	RIGHT SHOCK BLOCK
58	3	434508	STØDDÆMPER	SHOCK SEAT
59	1	434509	LUFTINDTAG BESLAG	AIR INTAKE TUBE SUPPORT
60	1	434510	PLADE	TIE PLATE
61	1	434511	PAKNING FOR LUFTINDTAG	SEALING PLATE OF AIR INTAKE SUPPORT
62	1	434512	FLANGE FOR LUFTINDTAG	AIR INTAKE TUBE FLANGE
63	1	434513	KARBURATOR	CARBURETOR
64	1	434514	LUFTINDTAG	AIR INTAKE SOCKET
65	1	434515	LUFTFILTER	AIR FILTER
66	1	434516	PINBOLT M5X30 M5X30	DOUBLE-SCREW BOLT GM5-M5x30
67	1	434517	STØTTE	CUSHION OF AIR INTAKE SOCKET
68	2	11gb/t90744M5x50	MASKINSKRUE 5X50	MACHINE SCREW 5X50
69	1	434518	MOTORHUS HØJRE	RIGHT CASE
70	1	434519	STØVPLADE	DUST PLATE
71	3	413145	STIFT 6X40	PIN 6X40
72	1	416398	LEDNING JORD	CABLE
73	1	434520	BLOK	LEFT SHOCK BLOCK
74	5	11GB/T907413M5X25	MASKINSKRUE MED KRYDSKÆRV M5X25	MACHINE SCREW M5X25
75	1	434521	OLIEBESKYTTER	OIL SHIELD
76	2	403343	FJEDERSKIVE	SPRING COLLAR
77	2	290483	MASKINSKRUE GUL 4X8	MACHINE SCREW 4X8
78	4	422324	SKRUE M4X10	SCREW M4X10
79	1	434522	SVINGHJUL	FLYWHEEL ASSEMBLY
80	1	406139	SVINGHJULSMØTRIK M8X1	NUT
81	1	434523	TANKLÅG OLIE	OIL CAP ASSEMBLY
82	1	434341	PAKNING 24.7x3.55	PACKING WASHER 24.7x3.55
83	1	434449	HOLDER FOR TANKLÅG	ANTI-DROP PLATE
84	1	434344	KÆDEOLIE TANKLÅG	OIL COVER
85	2	413216	LÅSERING	LOCKING RING
86	1	434524	SUGESLANGE 2.5X6X105	SUCTION TUBE 2.5x6x105
87	1	434525	SLANGE FORBINDER	SUCTION JET
88	1	434526	MOTORHUS VENSTRE	LEFT CASE
89	1	11GB/T8931	BRUG 11GB/T893128	USE

POS	QTY	PARTNUMBER	BESKRIVELSE	DESCRIPTION
90	1	434527	PAKDÅSE 15X35X4,5 15X35X4,5	OIL SEAL 15x35x4.5
91	1	434528	TÆENDSPOLE	IGNITER
92	1	434529	KABEL	EXTINCTION CONDUCTOR
93	1	434530	TÆENDRØRSKAPPE	IGNITER CAP
94	2	434531	STØVDÆKSEL	DUST COVER
95	1	434532	PAKNING	CASE BODY SEALING PLATE
96	1	434533	DÆMPER	DAMPER