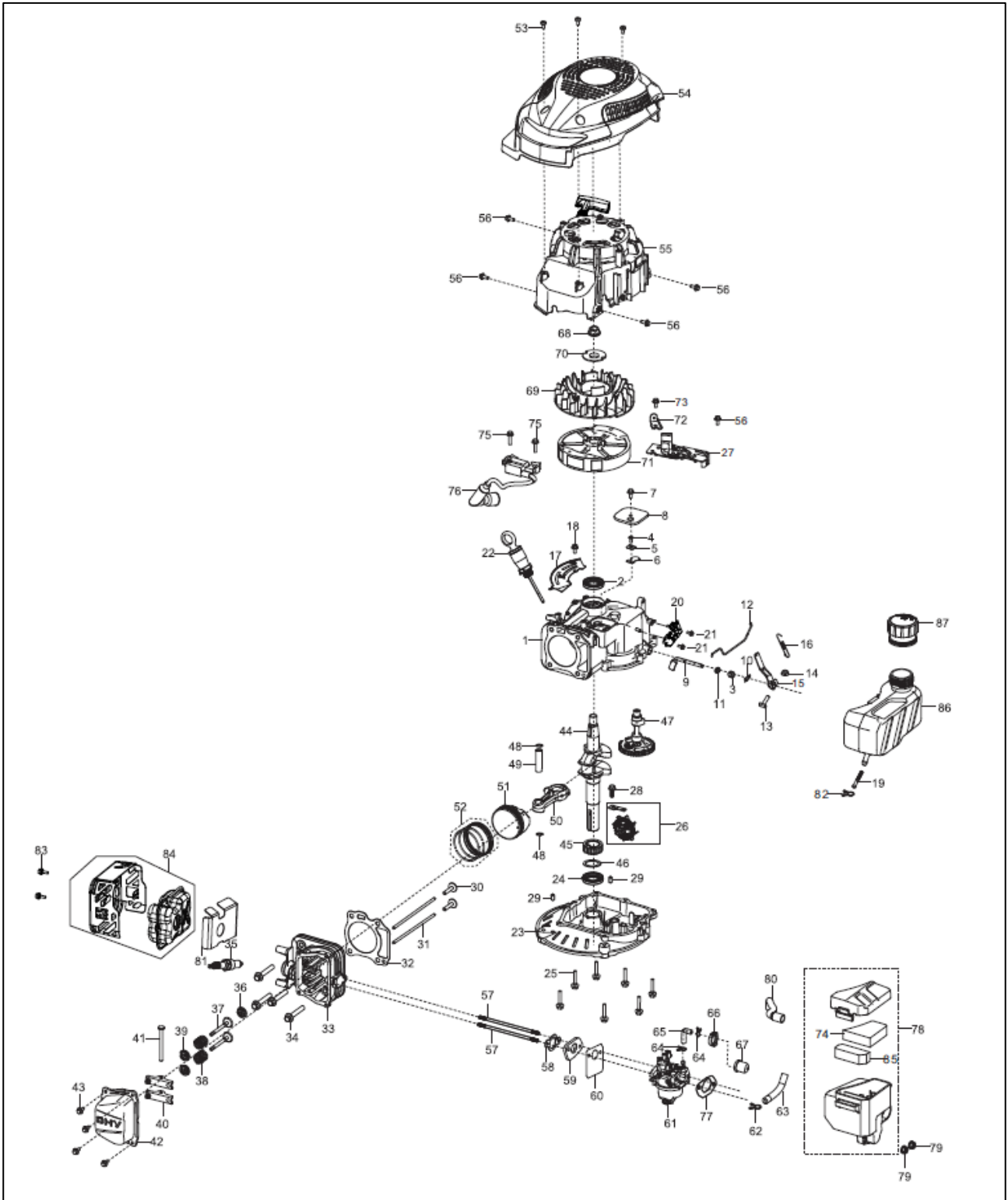


Model: RV145

Part Number: RV145

Year: 2023



POS	QTY	PARTNUMBER	BESKRIVELSE	DESCRIPTION
1	1	451337	KRUMTAPHUS	CRANKCASE SUBASSEMBLY.
2	1	451338	PAKDÅSE	SEAL, OIL
3	1	451339	PAKDÅSE	SEAL, OIL
4	1	451340	SKRUE	CROSS-RECESSED PAN HEAD SCREW
5	1	451341	BESLAG	BREATH SHEET
6	1	451342	BESLAG	BREATH SHEET STOP PLATE
7	1	451343	BOLT	BOLT
8	1	451344	PLADE	PLATE, BREATH GROOVE COVER
9	1	451345	ÅNDERØR	ARM, GOVERNOR
10	1	451346	STIFT	COTTER PIN
11	1	451347	SKIVE	FLAT WASHER
12	1	451348	REGULATORSTANG	ROD, GOVERNEOR
13	1	451349	BOLT	BOLT, GOVERNOR SUPPORT
14	1	451350	MØTRIK	HEXAGON NUT WITH FLANGE
15	1	451351	REGULATORARM	GOVERNOR BRACKET SUBASSEMBLY
16	1	451352	REGULATORFJEDER	SPRING, GOVERNOR
17	1	451353	BESLAG	BODY LEFT SHIELD
18	1	451343	BOLT	BOLT
19	1	451354	BENZINFILTER	STRAINER?FUEL
20	1	451355	REGULATOR	CONTROL ASSY, THROTTLE
21	2	451356	BOLT	BOLT
22	1	451357	OLIEPIND	DIPSTICK, OIL
23	1	451358	BUNDKAR	COVER, CRANKCASE
24	1	451359	PAKDÅSE	SEAL, OIL
25	7	451360	BOLT	BOLT
26	1	451361	GEAR	GEAR ASSY, GOVERNOR
27	1	451362	BREMSE	BRAKE ASSY.
28	1	451363	BOLT	BOLT
29	2	451364	STYREBØS	POSITION PIN
30	2	451365	VENTILSÆT	TAPPET, VALVE
31	2	451366	STØDSTANG	LIFTER, VALVE
32	1	451367	PAKNING FOR CYLINDER/TOPSTYKKE	GASKET, CYLINDER HEAD
33	1	451368	TOPSTYKKE	HEAD SUBASSEMBLY, CYLINDER
34	4	451369	BOLT	BOLT
35	1	451370	TÆNDRØR F5RTC	PLUG, SPARK
36	1	451371	PAKDÅSE	GUIDE, SEAL
37	1	451372	PINBOLT	VALVES SET
38	2	451373	VENTILFJEDER	SPRING, VALVE
39	2	451374	VENTILSÆDE	SEAT, VALVE SPRING
40	2	451375	VIPPEARM	ROCKER SUBASSEMBLY, VALVE
41	1	451376	AKSEL FOR VIPPEARM	SHAFT, VALVE ROCKER
42	1	451377	VENTILDÆKSEL	COVER, CYLINDER HEAD
43	4	451343	BOLT	BOLT
44	1	451378	KRUMTAP	CRANKSHAFT ASSY.
45	1	451379	GEAR	GEAR, TIMING DRIVE
46	1	451380	SKIVE	FLAT WASHER

POS	QTY	PARTNUMBER	BESKRIVELSE	DESCRIPTION
47	1	451381	KNASTAKSEL	CAMSHAFT ASSY.
48	2	451382	LÅSERING	CLIP, PISTON PIN
49	1	451383	KRYDSPIND	PIN, PISTON
50	1	451384	PEJLSTANG	ROD, CONNECTING
51	1	451385	STEMPEL	PISTON
52	1	451386	STEMPELRINGESÆT	RING ASSY, PISTON
53	3	451387	BOLT	SELF-TAPPING SCREW
54	1	451388	MOTORDÆKSEL	HOUSING, ENGINE
55	1	451389	REKYLSTARTER	STARTER ASSY, RECOIL
56	5	451390	BOLT	BOLT
57	2	451391	PINBOLT	STUD BOLT
58	1	451392	CYLINDERPAKNING	GASKET, INLET
59	1	451393	INSULATOR	PLATE, CARBURETOR INSULATOR
60	1	451394	KARBURATORPAKNING	GASKET, INSULATOR PLATE
61	1	451395	KARBURATOR	CARBURETOR ASSY.
62	1	451396	LÅSECLIPS	PIPE CLAMP
63	1	451397	BRÆNDSTOFSLANGE	TUBE, FUEL
64	2	451398	LÅSECLIPS	PIPE CLAMP
65	1	451399	RØR TIL PRIMER	TUBE, STARTING RICHED VALVE
66	1	451400	SÆDE FOR PRIMER	SEAT, STARTING RICHED VALVE
67	1	451401	PRIMER	VALVE BODY, STARTING RICHED
68	1	451402	MØTRIK	NUT, FLYWHEEL
69	1	451403	BLÆSEHJUL	IMPELLER
70	1	451404	STARTERTRISSE	SEAT, STARTER CUP
71	1	451405	SVINGHJUL	FLYWHEEL SUBASSEMBLY
72	1	451406	BESLAG	LUG? SHROUD
73	2	451407	BOLT	BOLT
74	1	451408	LUFTFILTERELEMENT	ELEMENT 2, AIR CLEANER
75	2	451390	BOLT	BOLT
76	1	451409	TÆNDSPOLE	COIL, IGNITION
77	1	451410	PAKNING	AIR CLEANER SEAL GASKET
78	1	451411	LUFTFILTER KOMPLET	AIR CLEANER
79	2	451350	MØTRIK	HEXAGON NUT WITH FLANGE
80	1	451412	ÅNDERØR	TUBE, BREATHER
81	1	451413	UDSTØDNINGSPAKNING	PLATE, MUFFLER INSULATOR
82	1	451396	LÅSECLIPS	PIPE CLAMP
83	2	451414	BOLT	BOLT
84	1	451415	UDSTØDNING	MUFFLER ASSY.
85	1	451416	LUFTFILTERELEMENT	ELEMENT, AIR CLEANER
86	1	451417	BRÆNDSTOFTANK	TANK ASSY, FUEL
87	1	451418	TANKDÆKSEL	FUEL TANK CAP