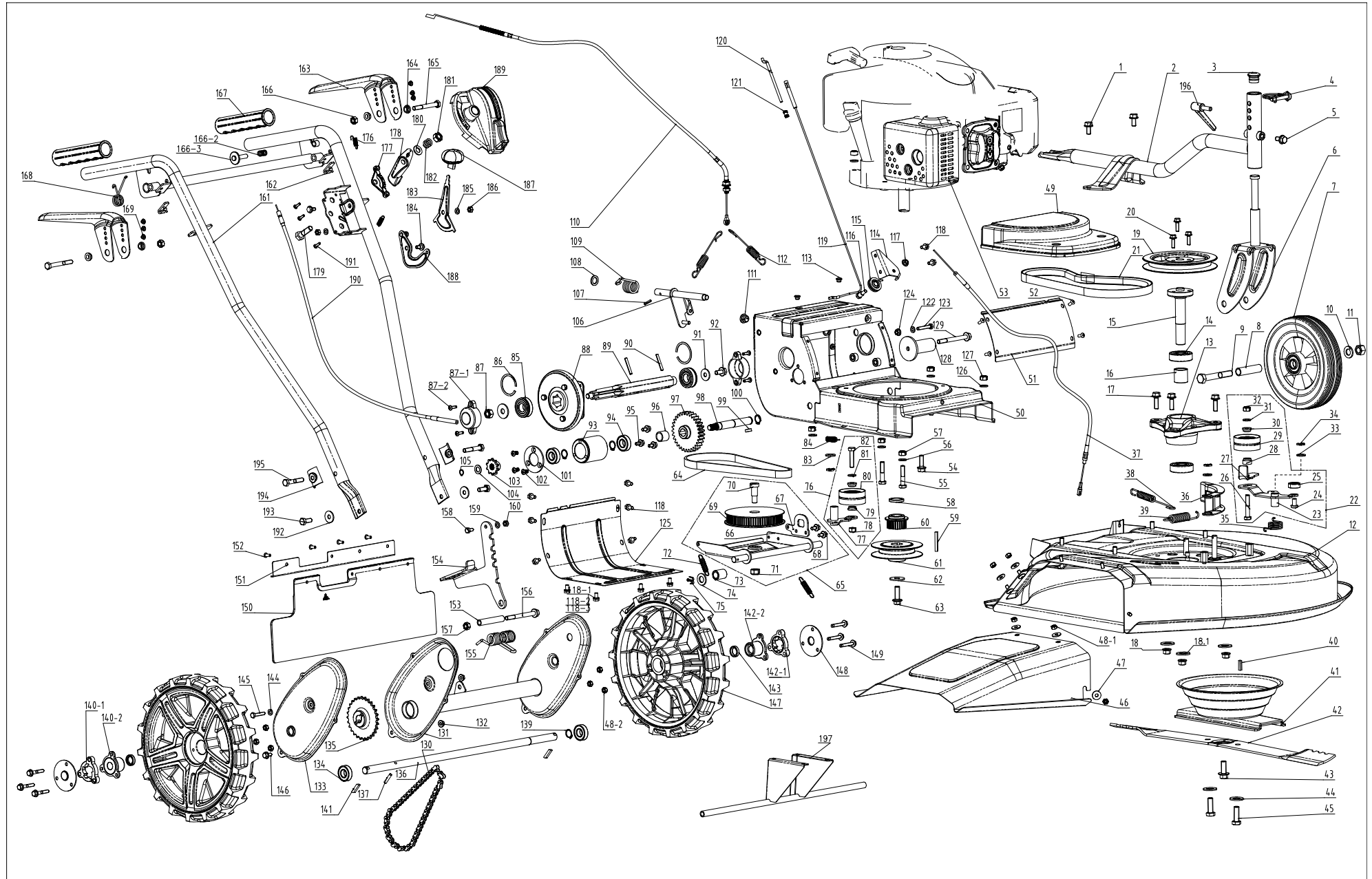


Model: Multi Cut 610

Part number: 90063180

Year: 2021



POS	QTY	PARTNUMBER	BESKRIVELSE	DESCRIPTION
1	2	441300	BOLT 8X16	HEXAGON FLANGE BOLT M8*16
2	1	441301	HJUL HOLDER	FRONT WHEEL BEND TUBE WELDING
3	1	425674	HÆTTE	HOOD
4	1	441302	SPLITBOLT 8X45	D TYPE PIN 8*45
5	1	441300	BOLT 8X16	HEXAGON FLANGE BOLT M8*16
6	1	441303	HJULGAFFEL	FRONT FORK WELDING
7	1	441304	HJUL	WHEEL 8*1.75
8	1	441305	HJUL BØS	FRONT WHEEL COVER
9	1	441306	HJULBOLT 12X80	HEXAGON BOLT M12*80
10	1	441307	SKIVE M12	FLAT WASHER 12
11	1	441308	MØTRIK M12	HEXAGON NUT M12
12	1	441309	KLIPPESKJOLD	CHASSIS WELDING
13	1	441310	KNIVHOLDER	OUTPUT SHAFT BASE
14	2	441311	KUGLELEJE 6204	BEARING 6204
15	1	441312	KNIVAKSEL	OUTPUT SHAFT
16	1	441313	BØS	STEEL BUSHING 27
17	3	441300	BOLT 8X16	HEXAGON FLANGE BOLT M8*16
18	3	441314	MØTRIK M8	HEXAGON FLANGE LOCKING NUT M8
19	1	441315	REMSKIVE	LARGE BELT PULLEY
20	3	441300	BOLT 8X16	HEXAGON FLANGE BOLT M8*16
21	1	441316	KILEREM 805MM	V-BELT
22	1	441317	REMSTRAMMER KPL.	TENSION PULLEY ASSEMBLY
23	1	441318	STRAMMEARM	TENSION PLATE WELDING
24	1	441319	BOLT	SEMI HOLLOW RIVET
25	1	441320	KUGLELEJE 628	BEARING 628
26	1	441321	BOLT 8X45	HEXAGON BLOT M8*45
27	1	441322	REMSTYR	HOOK PLATE
28	1	415797	BØS	BUSHING
29	1	441323	STRAMMERULLE	SMALL TENSION ASSEMBLY
30	1	415795	SKIVE	WASHER
31	1	441307	SKIVE M12	FLAT WASHER 12
32	1	441324	LÅSEMØTRIK	HEXAGON LOCKNUT M8
33	2	441325	SKIVE M10	WASHER 10
34	2	441326	SPLIT 2,5X20	SPLITPIN
35	1	441327	FJEDER	RESET SPRING
36	1	441328	BREMSE	BRAKE PLATE
37	1	441329	KABEL KNIV	CLUTCH CABLE
38	1	441330	FJEDER KOBLING	CLUTCH SPRING
39	1	441331	FJEDER	BRAKE DRAG SPRING
40	1	441332	NOT	FLAT KEY B5*20
41	1	441333	KNIVHOLDER	BLADE FRAME
42	1	441334	KNIV	BLADE
43	1	441300	BOLT 8X16	HEXAGON FLANGE BOLT M8*16
44	2	441335	SKIVE M10	BOWL FLAT KEY
45	2	441336	BOLT 10X30 1,25	HEXAGON BOLT M10-1.25*30

POS	QTY	PARTNUMBER	BESKRIVELSE	DESCRIPTION
46	1	441337	UDKASTERKLAP	GRASS OUTLET
47	5	441338	SKIVE M6	WASHER 6
48	11	441324	LÅSEMØTRIK	HEXAGON LOCKNUT M8
49	1	441339	REMSKÆRM	BELT COVER
50	1	441340	CHASSIS	GEARBOX CASE WELDING B
51	1	441341	FRONTPLADE	GEARBOX CASE FRONT COVER PLATE
52	4	441342	BOLT 5X12	CORE RIVET
53	1	441343	MOTOR LC1P70FA	ENGINE
54	1	441300	BOLT 8X16	HEXAGON FLANGE BOLT M8*16
55	2	441321	BOLT 8X45	HEXAGON BLOT M8*45
56	2	441307	SKIVE M12	FLAT WASHER 12
57	2	441324	LÅSEMØTRIK	HEXAGON LOCKNUT M8
58	1	441344	SKIVE	GEAR SLEEVE 22*4
59	1	441332	NOT	FLAT KEY B5*20
60	1	441345	REMSKIVE	PULLEY 1
61	1	441346	REMSKIVE	SMALL PULLEY
62	2	441338	SKIVE M6	WASHER 6
63	1	441347	BOLT 3/8X24	HEXAGON FLANGE BOLT3/8-24UNFX28
64	1	441348	KILEREM	MAIN TOOTHED BELT PULLEY 650-5M15
65	1	441349	REMSKIVE KOMPLET	SYNCHRONOUS WHEEL ASSEMBLY
66	1	441350	BESLAG	PULLEY BRACKET WELDING
67	1	441351	BESLAG	BRACKET SPACING PIECE
68	2	441300	BOLT 8X16	HEXAGON FLANGE BOLT M8*16
69	1	441352	REMSKIVE	LARGE BELT PULLEY ASSEMBLY
70	1	441353	BOLT 10X22	SCREW M10*22
71	1	441324	LÅSEMØTRIK	HEXAGON LOCKNUT M8
72	2	441354	FJEDER	DRAG SPRING 50
73	1	441355	BØS	SLEEVE
74	1	441307	SKIVE M12	FLAT WASHER 12
75	2	441326	SPLIT 2,5X20	SPLITPIN
76	1	441356	STRAMMERULLE KOMPLET	ASSISTANT TENSION PULLEY ASSEMBLY
77	1	441357	STRAMMEARM	ASSISTANT TENSION PLATE WELDING
78	1	441324	LÅSEMØTRIK	HEXAGON LOCKNUT M8
79	2	415795	SKIVE	WASHER
80	1	441323	STRAMMERULLE	SMALL TENSION ASSEMBLY
81	1	441307	SKIVE M12	FLAT WASHER 12
82	1	441358	BOLT 8X35	HEXAGON BOLT M8*35
83	1	441307	SKIVE M12	FLAT WASHER 12
84	1	441354	FJEDER	DRAG SPRING 50
85	2	441359	LEJE 6203	WITH SLOT BEARING 6203
86	2	441360	LÅSERING 40	CIRCLIP ?40
87	1	441324	LÅSEMØTRIK	HEXAGON LOCKNUT M8
87-1	2	441361	LEJEHOLDER M10	BEARING COVER

POS	QTY	PARTNUMBER	BESKRIVELSE	DESCRIPTION
87-2	4	441362	SKRUE	SELF TAPPING SCREW ST4.2*18
88	1	441363	GEAR	GEAR WHEEL ASSEMBLY
89	1	441364	AKSEL	HEXAGON SHAFT
90	2	441365	PIND	SPRING PIN 5*35
91	1	441338	SKIVE M6	WASHER 6
92	1	441300	BOLT 8X16	HEXAGON FLANGE BOLT M8*16
93	1	441366	BOLT 8X16	LARGE SUPPORTING TUBE
94	2	441367	LEJE 6002	BEARING 6002
95	3	441300	BOLT 8X16	HEXAGON FLANGE BOLT M8*16
96	1	441368	BØS	STEEL SLEEVE 20
97	1	441369	GEAR	GEAR Z31
98	1	441370	AKSEL	SHAFT 15
99	1	441371	NOT	WOODRUFF KEY5X6.5X16
100	3	441372	LÅSERING	CIRCLIP
101	1	441373	PLADE	PRESSURE CHAIN PLATE
102	3	441374	SKRUE	CROSS RECESSED COUNTERSUNK HEAD SCREWSM6
103	1	441375	TANDHJUL	SMALL SPROCKET WHEEL
104	1	441325	SKIVE M10	WASHER 10
105	1	441372	LÅSERING	CIRCLIP
106	1	441376	BESLAG	FORK WELDING
107	1	441365	PIND	SPRING PIN 5*35
108	1	441325	SKIVE M10	WASHER 10
109	1	441377	FJEDER	FORK RESET SPRING
110	1	441378	KABEL KOBLING	STEPPED CABLE
111	1	402750	PLASTIKBØS	BUSHING
112	2	441379	FJEDER	STEP CLUTCH DRAG SPRING
113	2	441380	PROP	GEAR PLATE F8 RUBBER PLUG
114	1	402738	BESLAG	BRACKET
115	1	402737	RULLE F/WIRE	ROLL
116	1	415786	BOLT SPECIAL	BOLT SPECIAL
117	1	441381	MØTRIK M6	HEXAGON FLANGE NUT M6
118	10	441382	BOLT 6X12	HEXAGON FLANGE BOLT M6*12
118-1	2	441383	SKIVE M6	FLAT WASHER 6
118-2	2	441384	FJEDRESKIVE M6	SPRING 6
118-3	2	441385	SKRUE 6X12	SCREW M10*12
119	1	441386	KABEL JUSTERING HASTIGHED	STEPPED CABLE ADJUSTING DRAGLINE
120	1	441387	JUSTERSTYKKE	SJ STEEL ROD + COPPER NUT
121	1	410976	MØTRIK RUSTFRI M5	NUT M5
122	1	441307	SKIVE M12	FLAT WASHER 12
123	1	441388	BOLT 6X12	HEXAGON BLOT M6*35
124	1	441381	MØTRIK M6	HEXAGON FLANGE NUT M6
125	1	441389	PLADE	REAR COVER PLATE
126	4	441307	SKIVE M12	FLAT WASHER 12
127	4	441324	LÅSEMØTRIK	HEXAGON LOCKNUT M8

POS	QTY	PARTNUMBER	BESKRIVELSE	DESCRIPTION
128	1	441390	BESLAG	SUPPORTING TUBE WELDING
129	1	441300	BOLT 8X16	HEXAGON FLANGE BOLT M8*16
130	1	441391	KÆDE	CHAIN
131	1	441392	KÆDEHUS	REAR WHEEL SUPPORT WELDING
132	2	441381	MØTRIK M6	HEXAGON FLANGE NUT M6
133	1	441393	LÅG FOR KÆDE	COVER PLATE WELDING
134	2	441367	LEJE 6002	BEARING 6002
135	1	441394	TANDHJUL	LARGE SPROCKET WHEEL
136	1	441395	AKSEL	SHAFT 15
137	1	441396	PIND 5.15X25	CYLINDRICAL PIN 5.15*25
139	1	441372	LÅSERING	CIRCLIP
140-1	1	450632	HJULHOLDER COVER HØJRE 0.85	CORE WHEEL OUTER SLEEVE R
140-2	1	450633	HJULHOLDER LEJE 1.28	CORE WHEEL INNER SLEEVE
141	2	441399	NOT	ONE-WAY KEY
142-1	1	450634	HJULHOLDER COVER VENSTRE 0.85	CORE WHEEL SLEEVE L
142-2	1	450633	HJULHOLDER LEJE 1.28	CORE WHEEL INNER SLEEVE
143	2	441401	PAKDÅSE	GREASE SEAL
144	1	441307	SKIVE M12	FLAT WASHER 12
145	1	441358	BOLT 8X35	HEXAGON BOLT M8*35
146	1	441300	BOLT 8X16	HEXAGON FLANGE BOLT M8*16
147	2	441402	HJUL	REAR WHEEL
148	2	441403	NAVKAPSEL	CORE WHEEL COVER
149	6	441404	BOLT 6X35	HEXAGON FLANGE BOLT ST6*35
150	1	441405	AFSKÆRMNING	BLOCK GRASS RUBBER
151	1	441406	BESLAG	PRESSPLATE
152	4	441407	BOLT 6X10	HEXAGON FLANGE SCREW M6*10
153	1	441408	BØS	SPRING SLEEVE
154	1	441409	PEDAL	PEDAL
155	1	441410	FJEDER	SPRING
156	1	441300	BOLT 8X16	HEXAGON FLANGE BOLT M8*16
157	1	441324	LÅSEMØTRIK	HEXAGON LOCKNUT M8
158	1	441358	BOLT 8X35	HEXAGON BOLT M8*35
159	1	441307	SKIVE M12	FLAT WASHER 12
160	1	441324	LÅSEMØTRIK	HEXAGON LOCKNUT M8
161	1	441411	STYR	HANDRAIL WELDING B
162	2	441412	BESLAG	HANDLEBAR CUSHION
163	2	441413	HÅNDTAG	HANDLEBAR WELDING
164	4	402760	SKIVE	WASHER
165	2	441321	BOLT 8X45	HEXAGON BLOT M8*45
166	2	441324	LÅSEMØTRIK	HEXAGON LOCKNUT M8
166-2	1	441414	FJEDER	SMALL PRESSURE SPRING
166-3	1	441415	PIND	SAFETY PIN 8
167	2	441416	HÅNDTAG	HANDRAIL CASE
168	1	441417	FJEDER	CLUTCH HAND SHANK SPRING 3

POS	QTY	PARTNUMBER	BESKRIVELSE	DESCRIPTION
169	6	441418	GUMMIHÆTTE	CLUTCH HAND SHANK RUBBER PLUG
176	1	441419	BESLAG	SMALL DRAG SPRING
177	1	441420	HÅNDTAG	PLASTIC PAD
178	1	441421	BOLT 10X35	SWITCH HANDLEBAR
179	1	441306	HJULBOLT 12X80	HEXAGON BOLT M12*80
180	1	441307	SKIVE M12	FLAT WASHER 12
181	1	441324	LÅSEMØTRIK	HEXAGON LOCKNUT M8
182	1	441422	FJEDER	SHIFTING HAND SHANK SPRING
183	1	441423	HÅNDTAG	STEPPED ADJUSTING HANDGRIP
184	2	441424	BOLT 6X4,8	BLOT M6*4.8
185	2	441307	SKIVE M12	FLAT WASHER 12
186	2	441324	LÅSEMØTRIK	HEXAGON LOCKNUT M8
187	1	441425	HÅNDTAG	GPC CLUTCH HANDLE BALL KNOB
188	1	441426	BESLAG	ADJUSTING LEVER ASSY
189	1	441427	COVER	OIL SWITCH BOX
190	1	441428	GASKABEL	OIL SWITCH CABLE
191	3	441429	SKRUE	SCREW
192	2	441338	SKIVE M6	WASHER 6
193	2	441388	BOLT 6X12	HEXAGON BLOT M6*35
194	2	402735	BESLAG FOR STYR	BRACKET
195	2	441321	BOLT 8X45	HEXAGON BLOT M8*45
196	1	441430	LÅSEBOLT	LOCKING HAND SHANK
197	1	441431	BESLAG	REAR PLATE WELDING