

ENG

Translation of the
original user guide



TYING MACHINE FIXION 2

Operating instructions

29_133084-E
05/2020

**READ THE OPERATING INSTRUCTIONS
MANUAL CAREFULLY BEFORE USE**

TABLE OF CONTENTS

1. INTRODUCTION	5
2. SAFETY	6
2.1. GENERAL POWER TOOL SAFETY WARNINGS	6
2.1.1. WORK AREA SAFETY	6
2.1.2. ELECTRICAL SAFETY	6
2.1.3. PERSONAL SAFETY	6
2.1.4. POWER TOOL USE AND CARE	7
2.1.5. BATTERY TOOL USE AND CARE	7
2.1.6. SERVICE	8
2.1.7. TOOL'S END-OF-LIFE MANAGEMENT	8
2.2. SAFETY WARNING THE TYING MACHINE	8
2.3. SAFETY MEASURES ASSOCIATED WITH BATTERY USE	8
2.4. SAFETY MEASURES WHEN USING THE "PELLENC" CHARGER	9
2.5. SAFETY SIGNAGE	9
2.6. PERSONAL PROTECTION EQUIPMENT	10
3. DESCRIPTION AND TECHNICAL CHARACTERISTICS	11
3.1. DESCRIPTION	11
3.2. TECHNICAL FEATURES	12
4. COMMISSIONING	13
4.1. SETTING UP BELT AND HOLSTER	13
4.2. FITTING THE LATERAL REEL EQUIPPED WITH THE LARGE COIL ONTO THE BELT.	13
4.3. PUTTING ADAPTABLE DISPENSER FITTED WITH THE SMALL COIL ONTO THE TYING MACHINE.	14
5. USE	15
5.1. TYING MACHINE ON/OFF	15
5.2. ADJUSTING THE TIGHTNESS OF THE TIE	15
5.3. RELOAD THE LARGE COIL	15
5.4. RELOAD THE SMALL COIL	17
5.5. INSERT THE CORD INTO THE TYING MACHINE	18
5.6. GRIP	19
5.7. END OF COIL	21
5.8. CHARGING THE TOOL	23
5.8.1. INSTRUCTIONS BEFORE CHARGING BUILT-IN BATTERY	23
5.8.2. THE DISPLAY SHOWING REMAINING BUILT-IN BATTERY CAPACITY	23
5.8.3. CHARGING THE BUILT-IN BATTERY	24
6. MAINTENANCE	27
6.1. INTERNAL CLEANING OF FIXION 2	27
6.2. CHARGER	29

6.3. MISC. MAINTENANCE	29
6.4. BUILT-IN BATTERY REPLACEMENT	29
7. INCIDENTS AND TROUBLESHOOTING	30
7.1. BUILT-IN BATTERY	30
7.2. CHARGER	30
7.3. SUMMARY OF CHARGE INDICATOR AND BEEP MESSAGES	30
8. STORAGE AND TRANSPORT	32
8.1. STORAGE	32
9. ACCESSORIES AND CONSUMABLES	32
10. WARRANTIES	33
10.1. GENERAL WARRANTIES	33
10.1.1. STATUTORY WARRANTY	33
10.1.2. COMMERCIAL WARRANTYPELLENC	33
10.1.3. PAID AFTER-SALES SERVICE	34
11. EC STATEMENT OF COMPLIANCE	36
11.1. "EC" DECLARATION OF CONFORMITY: FIXION 2	36

1. INTRODUCTION

Dear Customer,

Thank you for purchasing your Tying machine FIXION 2 . Correctly used and maintained, this tool will give a satisfactory performance for many years.



Warning

Your device contains numerous recoverable or recyclable materials. Return it to your dealer or, failing this, to an approved servicing centre to be treated.



Comply with the regulations in force in your country as concerns environmental protection associated with your activity.



Warning

It is imperative that you read through the ENTIRE user's manual before using or servicing the tool. Always comply with the instructions and illustrations in the manual.


All through this user guide you will find advisory notes and information entitled: NOTE, IMPORTANT, ATTENTION and WARNING.

The points marked "NOTE" indicate additional information.

The points marked "IMPORTANT" warn the user of a potential risk to the equipment.

The points marked "ATTENTION" warn the user of a potentially hazardous situation which if not avoided leads to minor injuries.

The points marked "WARNING" warn the user of a potentially hazardous situation which if not avoided leads to serious injury or death.

The warning  indicates that damage resulting from failure to comply with the procedures and instructions is not covered by the warranty and the owner will be liable for any repair costs.

Safety indications are also given on the tool; they remind you of the safety precautions to be taken. Identify and read these indications before using the tool. Immediately replace any indications that may become partially illegible or deteriorated.

Refer to Section 2.5, "Safety signage" for the location diagram of the safety stickers affixed to the tool.

No part of this manual may be reproduced without the written permission of the company PELLENC. The illustrations given in this manual are for information purposes and are in no way contractual. The PELLENC company reserves the right to make any modification or improvement to its products as deemed necessary without informing customers already in possession of a similar model. This manual forms an integral part of the tool and must accompany the tool if it changes hands.

2. SAFETY

2.1. GENERAL POWER TOOL SAFETY WARNINGS



Warning

Read all safety warnings, instructions, illustrations and specifications provided with this power tool. Failure to follow all instructions listed below may result in electric shock, fire and/or serious injury.

Note

Save all warnings and instructions for future reference.

The term "power tool" in the warnings refers to your mains-operated (corded) power tool or battery-operated (cordless) power tool.

2.1.1. WORK AREA SAFETY

1. **Keep the work area clean and well lit.** Cluttered or dark areas invite accidents.
2. **Do not operate power tools in an explosive atmosphere, for example in the presence of flammable liquids, gases or dust.** Power tools create sparks, which can ignite dust or fumes.
3. **Keep children and bystanders away while operating the power tool.** Distractions can cause you to lose control of the tool.

2.1.2. ELECTRICAL SAFETY

1. **The power tool connector must be adapted to the socket. Never modify the connector in any way whatsoever. Do not use adapter plugs with earthed (grounded) power tools.** Unmodified plugs and suitable sockets reduce the risk of electric shock.
2. **Avoid contact with earthed surfaces such as pipes, radiators, cookers, and refrigerators.** There is an increased risk of electric shock if your body is in direct contact with the ground.
3. **Do not expose power tools to rain or damp conditions.** The entry of water into a power tool increases the risk of electric shock.
4. **Do not mishandle the power cord. Never use the cord for carrying, pulling or unplugging the power tool. Keep cord away from heat, oil, sharp edges and moving parts.** Damaged or entangled cords increase the risk of electric shock.
5. **Use an extension cord suitable for outdoor use when operating power tools outdoors.** Use a cord suitable for outdoors to reduce the risk of electric shock.
6. **Use a power supply protected by a residual current device (RCD) when the power tool is operated in a damp location.** Use of an RCD reduces the risk of electric shock.

Note

The term "Residual Current Device" (RCD) can be replaced by "Ground Fault Circuit Interrupter" (GFCI) or "Earth Leakage Circuit Breaker" (ELCB).

2.1.3. PERSONAL SAFETY

1. **Stay alert, watch what you are doing, and use common sense when operating the power tool. Do not use a power tool while you are tired or under the influence of drugs, alcohol or medication.** A moment of inattention when using a power tool can result in serious personal injury.

2. **Use personal protective equipment. Always wear eye protection.** Safety equipment such as dust masks, non-slip safety shoes, helmets, or ear protection used at the appropriate times reduces injuries.
3. **Avoid accidental starting of the tool. Make sure the switch is in the off position before you connect the tool to the power source and/or battery pack, pick it up, or carry it.** Carrying a power tool with your finger on the switch or connecting a power tool with the switch in the 'on' position can cause accidents.
4. **Remove any adjusting wrench before switching the electric tool on.** A wrench left attached to a rotating part can cause injury.
5. **Do not rush. Keep proper footing and balance at all times.** This provides better control of the power tool in unexpected situations.
6. **Dress appropriately. Do not wear loose clothing or jewellery. Keep hair and clothing away from moving parts.** Loose clothes, jewellery or long hair can get caught in moving parts.
7. **If devices are provided for connecting dust extraction and collection equipment, ensure that these are connected and properly used.** Use of dust collection can reduce dust-related hazards.
8. **Do not let familiarity gained from frequent use of tools allow you to become complacent and ignore tool safety principles.** A careless action can cause severe injury within a fraction of a second.

2.1.4. POWER TOOL USE AND CARE

1. **Do not force the power tool. Use the power tool suited for the job.** The adapted power tool does the work better and more safely at the speed it was built to operate at.
2. **Do not use the power tool if the switch does not allow it to be switched on and off.** Power tools that cannot be controlled by a switch are dangerous and must be repaired.
3. **Unplug the tool from the socket or remove the battery (if possible) before any adjustment, change of accessory or storage.** These preventive safety measures reduce the risk of accidentally starting the power tool.
4. **When not in use, keep power tools out of the reach of children and do not allow persons unfamiliar with the power tool or these instructions to operate it.** Power tools are dangerous when operated by inexperienced users.
5. **Maintenance of the power tool and its accessories is mandatory. Check that the moving parts are not out of alignment or jammed, that there are no broken parts or that there is no other condition which could affect the operation of the power tool. If damaged, repair the power tool before using it.** Many accidents are due to poorly maintained power tools.
6. **Keep the cutting elements sharp and clean.** Properly maintained cutting tools with sharp cutting elements are less likely to jam and are easier to control.
7. **Use the power tool, accessories, blades, etc. in accordance with these instructions, taking into account the working conditions and the work to be done.** Use of the power tool for operations different from those intended could result in a hazardous situation.
8. **Keep handles and grasping surfaces dry, clean and free from oil and grease.** Slippery handles and grasping surfaces do not allow for safe handling and control of the tool in unexpected situations.

2.1.5. BATTERY TOOL USE AND CARE

1. **Recharge only with the charger specified by the manufacturer.** A charger that is suitable for one type of battery pack may create a risk of fire when used with another battery pack.
2. **Use power tools only with specifically designated battery packs.** Use of any other battery packs may create a risk of injury and fire.
3. **When battery pack is not in use, keep it away from other metal objects, like paper clips, coins, keys, nails, screws or other small metal objects, that can make a connection from one terminal to another.** Shorting the battery terminals together may cause burns or a fire.
4. **Under abusive conditions, liquid may be ejected from the battery; avoid contact. If contact accidentally occurs, wash away with water. If liquid contacts eyes, seek additional medical help.** Liquid ejected from the battery may cause irritation or burns.
5. **Do not use a battery pack or tool that is damaged or modified.** Damaged or modified batteries may exhibit unpredictable behaviour resulting in fire, explosion or risk of injury.
6. **Do not expose a battery pack or tool to fire or excessive temperature.** Exposure to fire or temperature above 130 °C may cause explosion.

Note

The temperature “130°C” can be replaced by the temperature “265°F”.

7. **Follow all charging instructions and do not charge the battery pack or tool outside the temperature range specified in the instructions.** Charging improperly or at temperatures outside the specified range may damage the battery and increase the risk of fire.

2.1.6. SERVICE

1. **Have your power tool serviced by a qualified repair person using only identical replacement parts.** This will ensure that the safety of the power tool is maintained.
2. **Never service damaged battery packs.** Service of battery packs should only be performed by the manufacturer or authorized service providers.

2.1.7. TOOL'S END-OF-LIFE MANAGEMENT

1. **When the tool reaches the end of its life, PELLENC keeps the end of life sheet of the equipment at disposal.** The end of life sheet provides instructions for safely removing components.

2.2. SAFETY WARNING THE TYING MACHINE

1. Never modify the connector in any way whatsoever.
2. Always switch off the battery when the machine is not in use (LED must be off).
3. Never use the tool if it is damaged, incorrectly set or incompletely assembled.
4. Never remove or disable a safety device. Have the safety device repaired if is faulty.
5. Do not disassemble the tying machine.
6. Please test the machine before use to check that it is working properly.

2.3. SAFETY MEASURES ASSOCIATED WITH BATTERY USE

1. If not using the battery unit, store it away from other metal objects such as paper clips, coins, keys, nails, screws or other such small metal items that might form a connection between the two terminals. Creating a short-circuit between the battery terminals can lead to burns or cause a fire.
2. Keep the battery out of the reach of children and place it on a non-combustible support.
3. Do not interfere with its cooling cycle.
4. Do not use or leave the battery near a heat source (> 60°C).
5. Do not leave the battery in direct, strong sunlight.
6. Do not expose the battery to microwaves or high pressure.
7. Do not immerse the battery in water.
8. The batteries must be charged in a dry, ventilated room at a temperature between 10°C and 25°C maximum, away from any moisture.
9. If the battery is not used for 10 days, the battery will automatically discharge until it reaches its storage charge rate, and then goes to sleep. It will heat up during this phase.
10. Over time, the capacity of your battery reduces. When it reaches half of its original battery-life operating time, it should be replaced.
11. The battery may lose 1 to 4 % of its capacity when exposed to a temperature higher than or equal to 55 °C for one week.
12. The charging location must be equipped with a class D fire extinguisher (for metal fires) in good working order.
13. The standards in effect must be complied with when either shipping a complete tool or a battery.
 - A complete tool with a battery is a product that is classified as class 9, UN3481.
 - Battery alone: product that is classified as class 9, UN3480.
14. Use of a battery other than that provided by Pellenc SA is dangerous (risk of serious injury). If a different battery is used, Pellenc SA cannot be held responsible for any consequences.

15. The battery must be protected from any impact and must be positioned and secured appropriately during transportation.
16. In the case of suspicious smoke, place the battery outside the charging area or transportation vehicle as far away as possible from any inflammable material.
17. Never store a battery when its capacity is below 50 %. Recharge the battery before storage if the value is below 50%.
18. In inappropriate conditions, a liquid can flow batteries; avoid contact with it. In the event of accidental contact, rinse with water. In the event of contact with eyes, seek professional medical help. The liquid leaking from the batteries can cause irritations or burns.
19. Pellenc power tools must only be used with the battery units designed for the purpose. Use of other battery units can present a risk of injury and fire.
20. Only recharge using the charger indicated by the manufacturer. A charger adapted to one type of battery unit may present a fire risk if used with a different battery unit.
21. Do not use the battery for any purpose other than that initially envisaged (exclusively for use with Pellenc tools).
22. At the end of its life, the battery must be returned to the authorized distributor from whom it was purchased to be recycled in accordance with waste regulations.
23. Fragile case, contains an electronic board and lithium.

2.4. SAFETY MEASURES WHEN USING THE "PELLENC" CHARGER


1. When in operation, the charger's temperature can reach 60°C. No flammable material must be within 1.5 metres of the charger and battery.
2. Place the charger out of children's reach and onto a non-combustible support.
3. Do not interfere with its cooling cycle.
4. The charger supplied with the battery is designed to recharge the battery. Do not charge non-rechargeable batteries.
5. The charging location must be equipped with a class D fire extinguisher (for metal fires) in good working order.
6. If the output cord is cut or damaged, bring the entire charger back to the authorised distributor where the tool was purchased.
7. Only recharge using the "PELLENC" charger indicated by the manufacturer. A charger adapted to one type of battery unit may present a fire risk if used with a different battery unit.
8. This charger is designed to charge the batteries of Pellenc's lithium tools.
9. Do not use it for any other purposes.
10. Children must be supervised to ensure they do not play with the charger.
11. Verify that the cable cannot be folded and does not touch hot surfaces or sharp edges.
12. Ensure good ventilation during the charge.
13. Never cover the charger. This charger must not be used outdoors.
14. Make sure the power connector is not exposed to water.
15. Never charge a damaged battery.
16. The grid connection must comply with national electrical regulations.
17. Check the cable of the charger before using it. Never use the charger if the cable is damaged
18. When the battery is charging, place the charger on a non-flammable support, more than 1.5 m away from any flammable object.

2.5. SAFETY SIGNAGE



Do not expose to rain.

2.6. PERSONAL PROTECTION EQUIPMENT

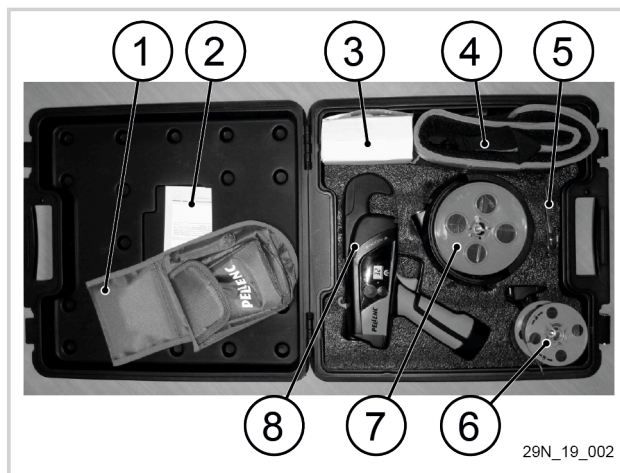
	Equipment	Wear	
	1	Safety helmet	--
	2	Protective visor	--
	3	Protective gloves	Recommended
	4	Safety footwear	Recommended
	5	Ear protection	--
	6	Protective goggles	Recommended
	7	Jacket or over-sleeves	--
	8	Work trousers	--

3. DESCRIPTION AND TECHNICAL CHARACTERISTICS

3.1. DESCRIPTION

Complete carry-case

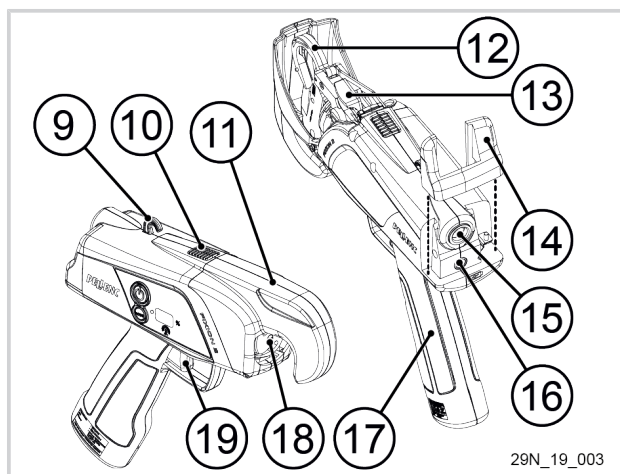
1. Holster
2. User guide and warranty card
3. Charger unit with adapters
4. Belt
5. Disgorging scissors
6. Small coil with reel adaptable for use with the tool
7. Large coil with lateral reel
8. Fixion 2 tying machine



29N_19_002

Fixion 2 tying machine

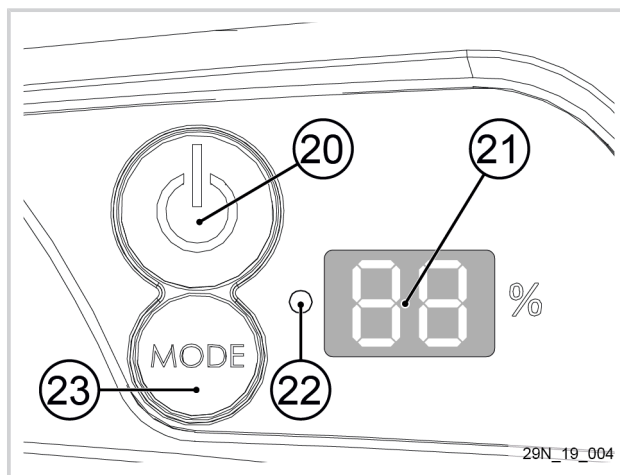
9. Hanging hook
10. Lock button for detachable dispenser
11. Swivel spout
12. Attachment hook
13. Upper guide
14. Guard
15. Inlet for tying cord
16. Charging connector
17. Handle with built-in battery (lithium-ion battery)
18. Twister
19. Operating trigger



29N_19_003

Fixion 2 display

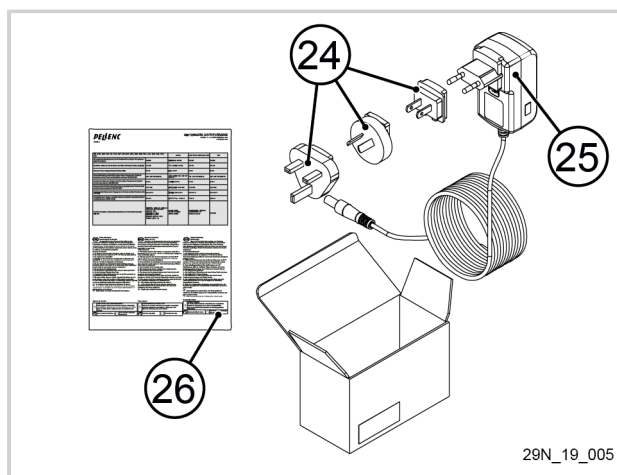
20. Tool on/off button
21. Gauge display
22. Power on LED for tool.
23. "MODE" button (1 to 4 twist selector)



29N_19_004

Fixion 2 charger

- 24. Connector adapters
- 25. Li-Ion battery charger
- 26. Charger manual


3.2. TECHNICAL FEATURES

Max tying capacity	25 mm
Power supply voltage of tying machine	10.9 V
Charger supply voltage	12.6V DC 500mA output
Li-Ion battery capacity	38 Wh 3.5 Ah
Charging time	8 hours
Tying machine operating capacity before recharging	up to 15,000 ties
Large reel cord length (carried by user)	about 200 m/coil
Corresponding no. of ties on large reel	around 1500 ties
Small reel cord length (carried on tool)	about 60 m/coil
Corresponding no. of ties on small reel	Around 450 ties
Weight of tying machine alone	800 g
Weight of tying machine with adaptable dispenser and small reel	990 g
Weight of whole assembly worn on belt (lateral dispenser with large reel)	640 g

Total vibration values (triax vector sum) determined in accordance with the EN 62841-1 standard (uncertainty of $K=1.5 \text{ m/s}^2$)	$a_h < 2.5 \text{ m/s}^2$
-----------------------------------------------------------------------------------------------------------------------------------------	---------------------------

Noise value measured according to Standard EN 62841-1	
Acoustic power level measured (uncertainty of $K=3 \text{ dB}$)	$L_{WA} = 80 \text{ dB}$
Level of acoustic pressure measured at the work station (uncertainty of $K=3 \text{ dB}$)	$L_{pA} = 69 \text{ dB}$

4. COMMISSIONING

4.1. SETTING UP BELT AND HOLSTER

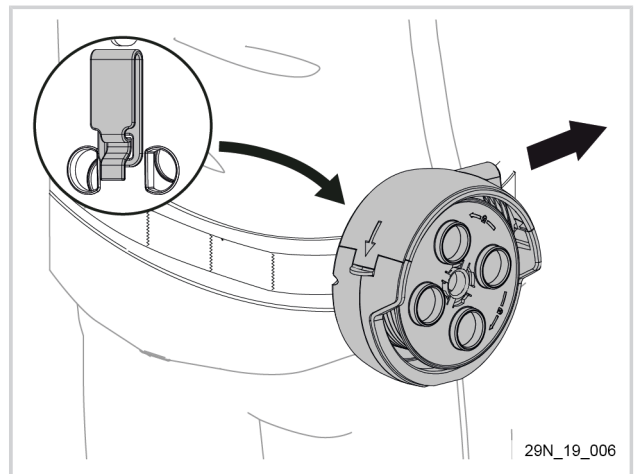
1. Remove the belt (4) from the carry-case.
2. Put the holster (1) in place on the belt (4), on the left or right side according to whether you are left or right-handed.
3. Place the belt (4) at your back, around your waist.
4. Adjust the length of the belt (4) to fit you.

4.2. FITTING THE LATERAL REEL EQUIPPED WITH THE LARGE COIL ONTO THE BELT.

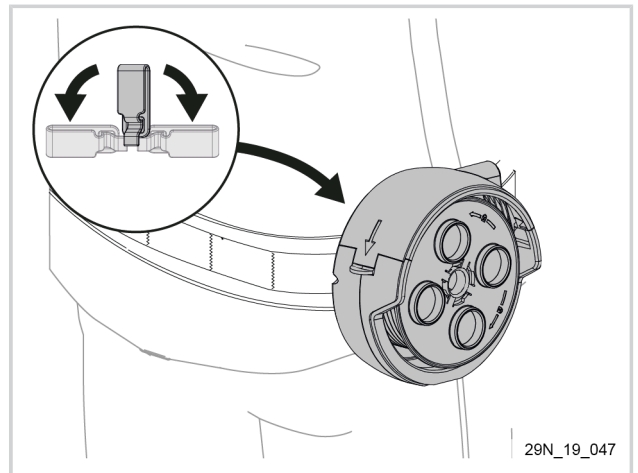
1. Clip the reel fitted with the large coil onto the belt.

Note

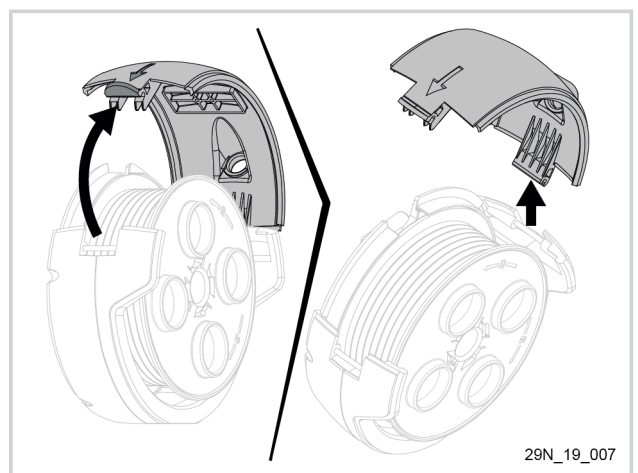
The reel cover is placed on the user's right side by default. This is so that the reel clips are on the right of the belt, with the cord outlet towards the front.



2. The reel clips pivot horizontally and vertically as required.



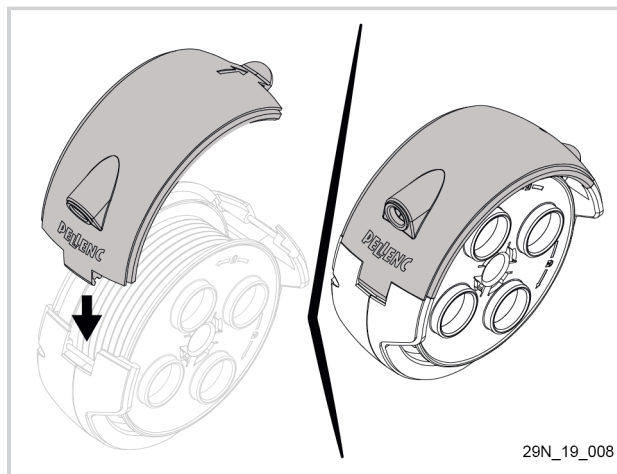
3. To switch the cover over to the left-handed version: Open the reel cover and unclip it.



4. Reverse the cover and clip it onto the reel.
5. Close the cover.

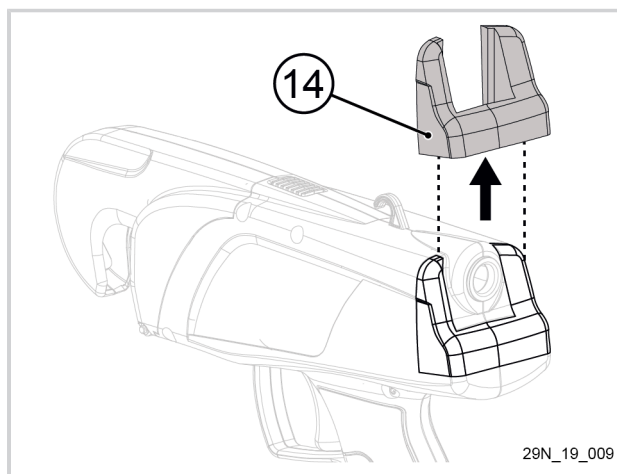
Note

In this configuration, the reel clips are on the left of the belt, with the cord outlet towards the front.

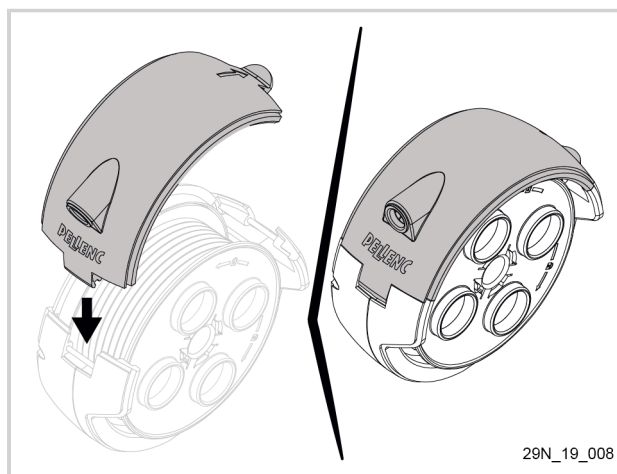


4.3. PUTTING ADAPTABLE DISPENSER FITTED WITH THE SMALL COIL ONTO THE TYING MACHINE.

1. Remove the guard (14) on the back of the tying machine.
2. Place the guard (14) into the slot reserved inside the carrycase.



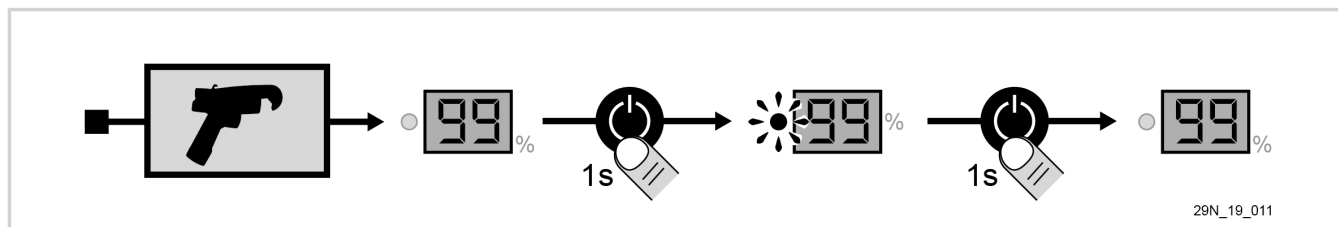
3. Put the small coil in place with the adaptable dispenser (6) instead of the guard (14).



5. USE

5.1. TYING MACHINE ON/OFF

The tying machine is started and stopped with the start/stop button (20).



5.2. ADJUSTING THE TIGHTNESS OF THE TIE

You can adjust the tightness of the tie to suit the type of wood you have to tie in place, by using the MODE button (23).

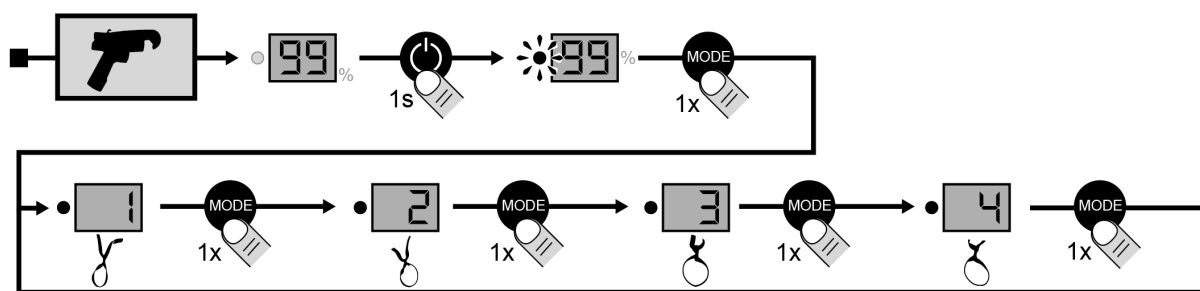
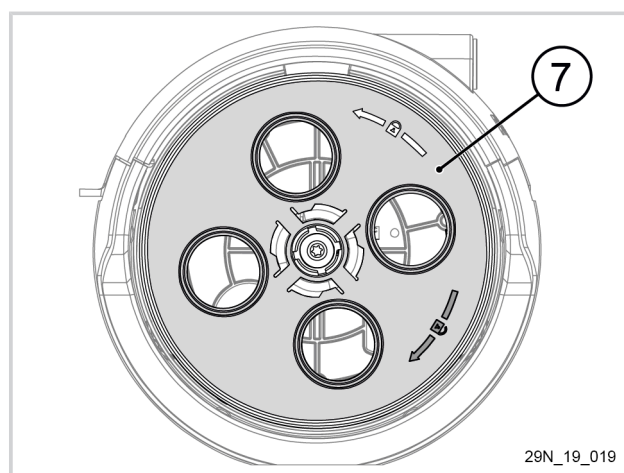


Table of equivalences

"MODE" button	1	2	3	4
Number of twists	3	5	7	8.5

5.3. RELOAD THE LARGE COIL

1. Block the rear flange and turn the front flange clockwise to unlock it.
2. Remove the front flange from the lateral dispenser (7).



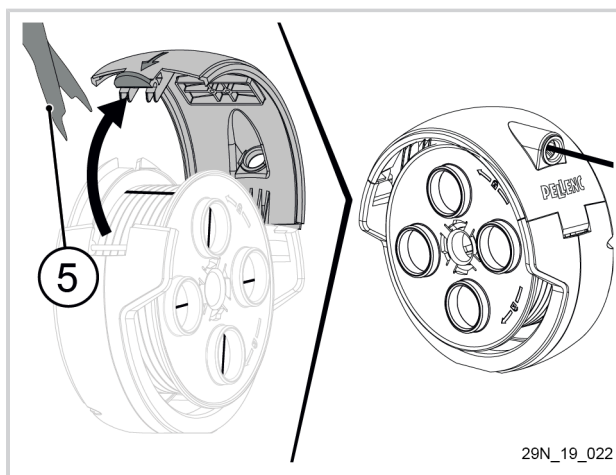
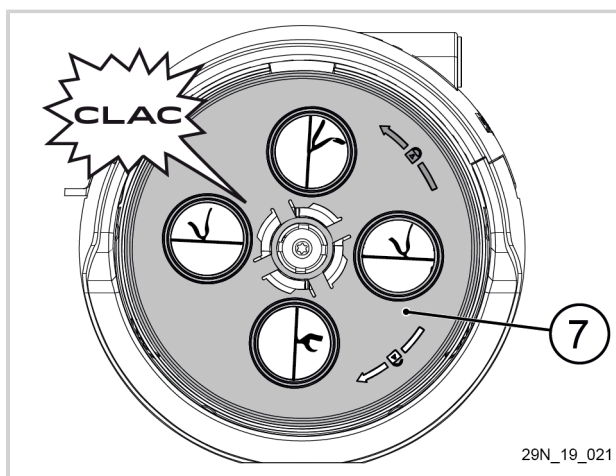
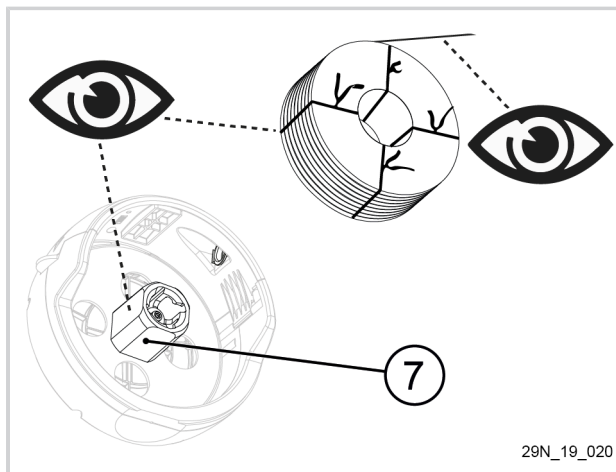
3. Put the tie reel in place: Match up the 4 straps with the 4 flats on the hub of the lateral dispenser (7) and make sure the end of the tie is coming out in the right direction.

Note

The coil must unwind clockwise through the outlet opening of the lateral dispenser (7) (right-handed user). The coil must run counterclockwise through the exit port of the lateral dispenser reel (7) (left-handed user).

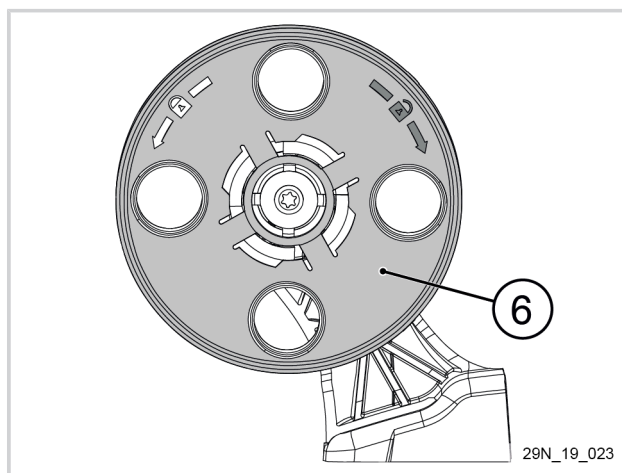
4. Replace the front flange on the hub of the lateral dispenser (7).
5. Block the rear flange and turn the front flange anti-clockwise to lock it.

6. Open the cover of the reel and pass the cord through the opening.
7. Cut and remove the 4 straps with the disgorging scissors (5).
8. Close the cover and unwind the cord to the desired length.



5.4. RELOAD THE SMALL COIL

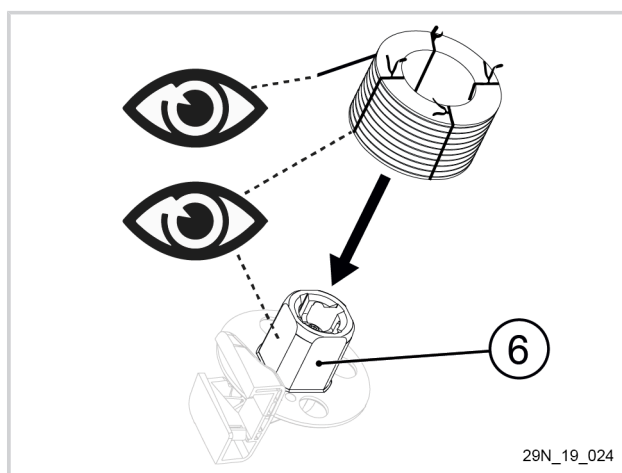
1. Block the rear flange and turn the front flange clockwise to unlock it.
2. Remove the front flange from the adaptable dispenser (6).



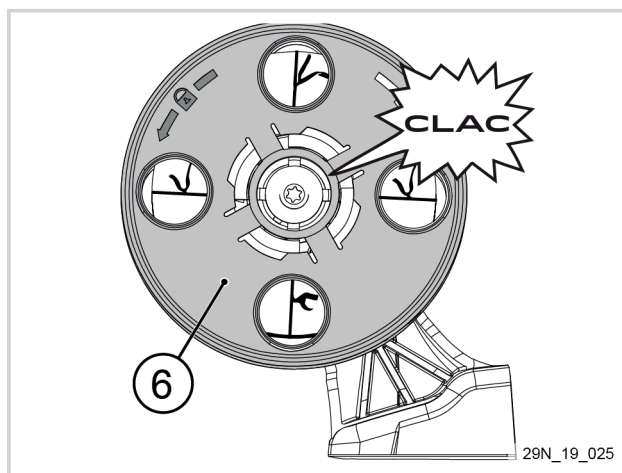
3. Put the tie reel in place: Match up the 4 straps with the 4 flats on the hub of the adaptable dispenser (6) and make sure the end of the tie is coming out in the right direction.

Note

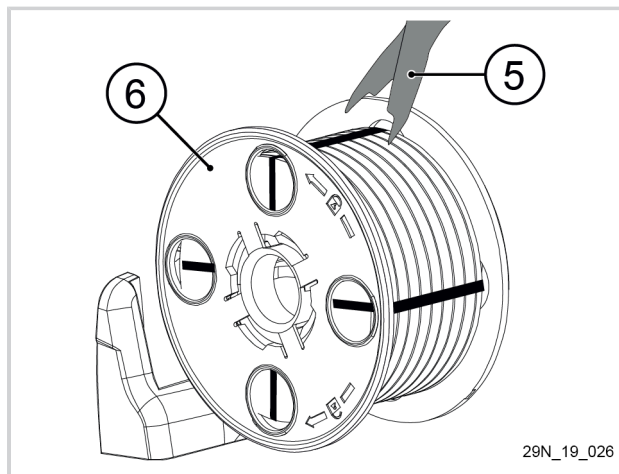
The coil must unwind clockwise.



4. Replace the front flange on the hub of the adaptable dispenser (6).
5. Block the rear flange and turn the front flange anti-clockwise to lock it.



6. Cut and remove the 4 straps with the disgorging scissors (5).



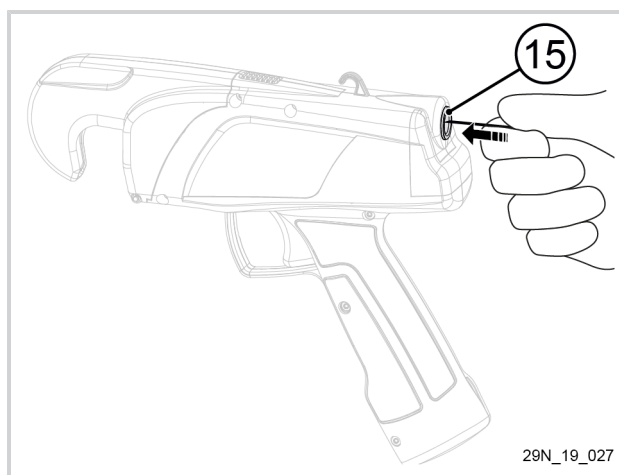
5.5. INSERT THE CORD INTO THE TYING MACHINE

Large coil:

1. Insert the tie, flat, into the opening (15) of the tying machine until the tie cord reaches the end stop.

Note

The coil must unwind clockwise through the outlet opening of the lateral dispenser (7).

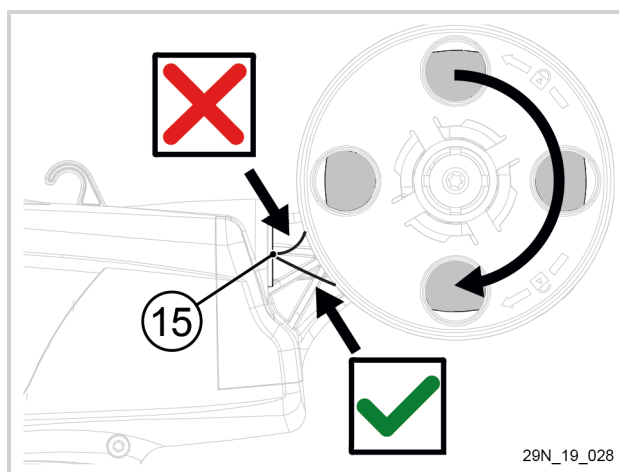


Small coil:

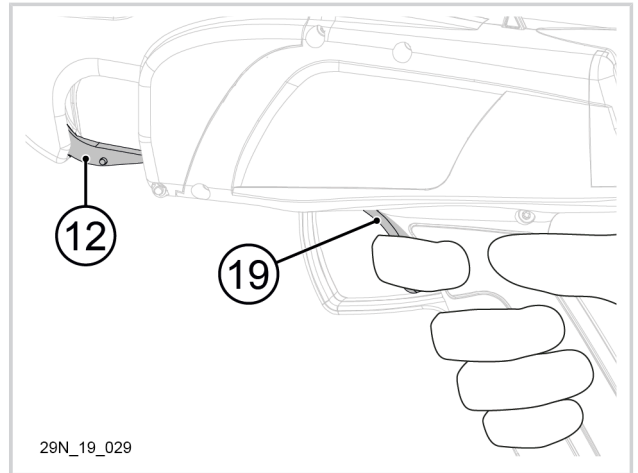
1. Insert the tie, flat, into the opening (15) of the tying machine until the tie cord reaches the end stop.
2. Make sure the tie is inserted from below and not from above.

Note

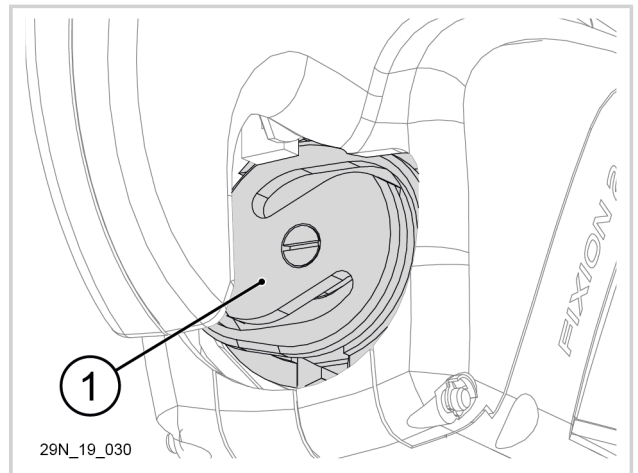
The coil must unwind clockwise.



3. Start the tying machine (see Section 5.1, "Tying machine on/off").
4. Press the trigger (19) (a single press) to push the tie through to the hook (12).



5. Check that no scrap of cord remains trapped in the twister (18), make one empty tie to test it, and remove this tie.



5.6. GRIP

It takes a few hours handling to become familiar with the tying machine. The tying process is not automatic. To ensure your tool is working properly, and you are comfortable with it, always comply with the following conditions:

- When you use the large coil, keep the assemblies properly aligned: reel / cord / tying machine.
- When you use the small coil, check that the tie has been properly inserted into the intake opening of the tying machine.

Important

The cord must not be held at the tying machine intake.

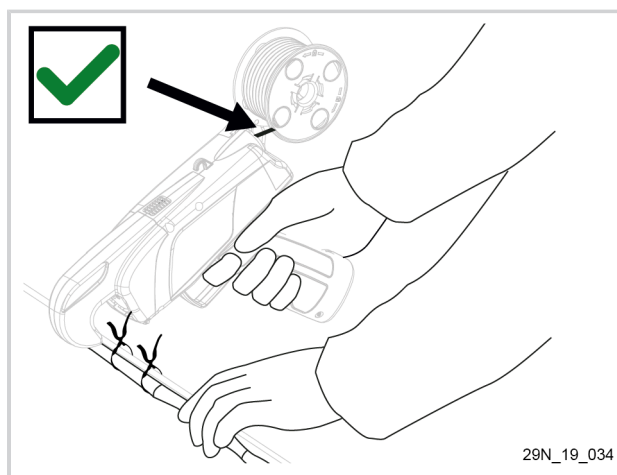


Warning

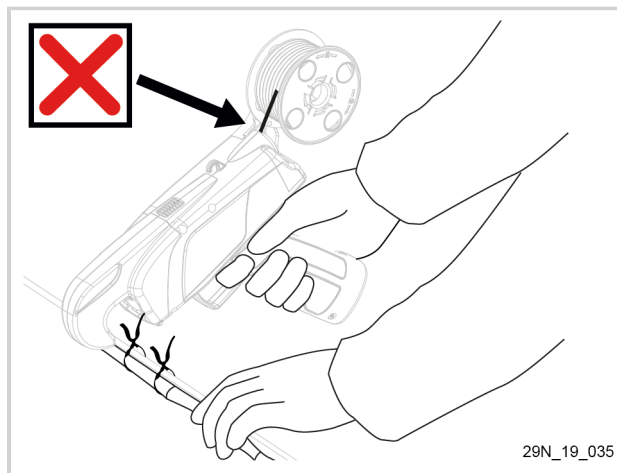
Avoid any malfunction by making sure the cord is not bent at the tying machine intake opening.

The tying machine must be used at a temperature of between -5° and +35°C.

Correct position of the cord when using the small coil.



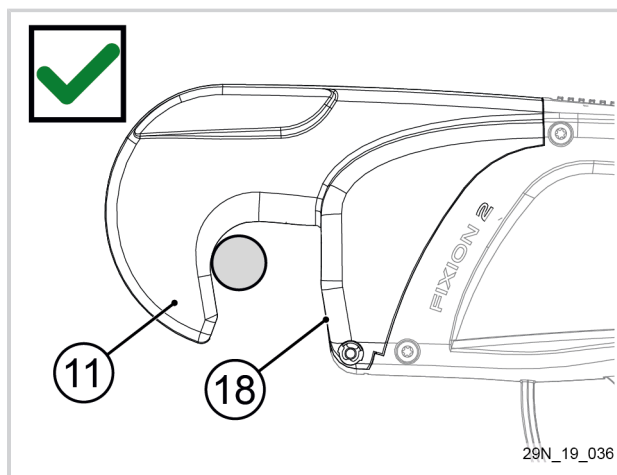
Incorrect position of the cord when using the small coil.



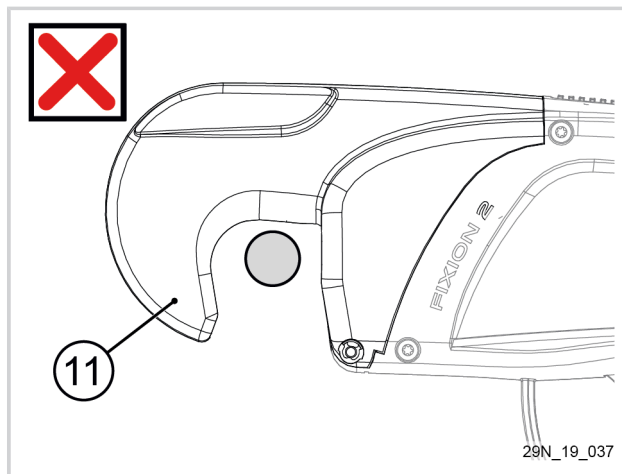
Correct position of wood in the tying machine.

Note

The wood must be positioned against the swivel dispenser (11) so the twister (18) can attach the tie correctly on the metal wire.



Incorrect position of wood in the tying machine.



5.7. END OF COIL

Check the load level of remaining coil. When the marker for the end of the cord appears (there is no more cord in the coil-holder) and there is only around ten centimetres of cord visible at the back of the tying machine, stop tying.

Important

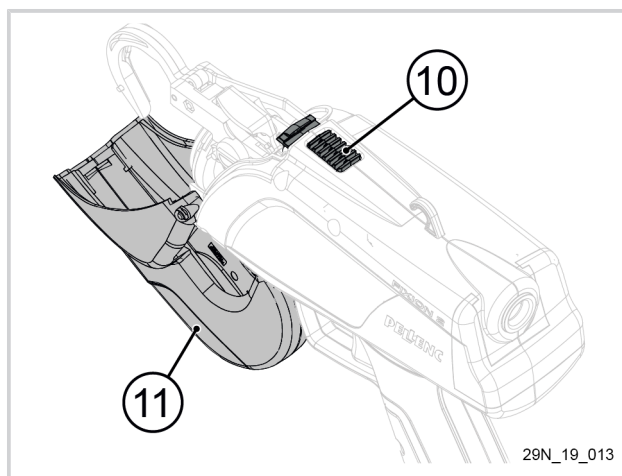
These operations must be done each time the coil is emptied.



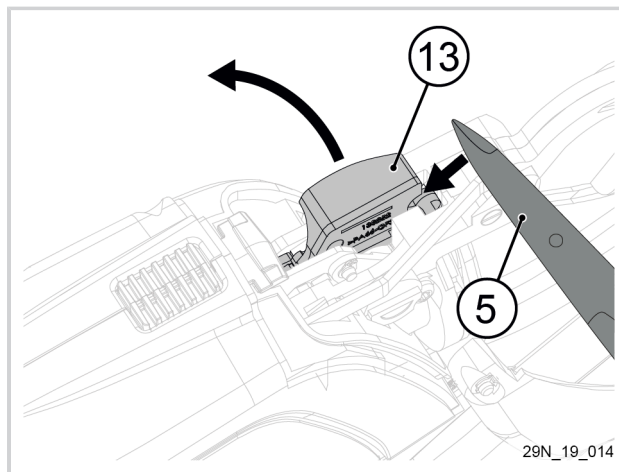
Warning

To avoid damage to the tool, it is best not to operate it without cord.

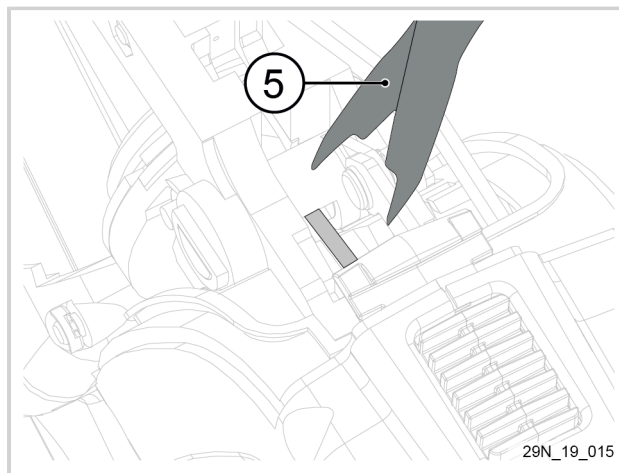
1. Turn off the tying machine (start/stop button (20), see Section 5.1, "Tying machine on/off").
2. Open the swivel dispenser (11) with the lock/unlock button (10).



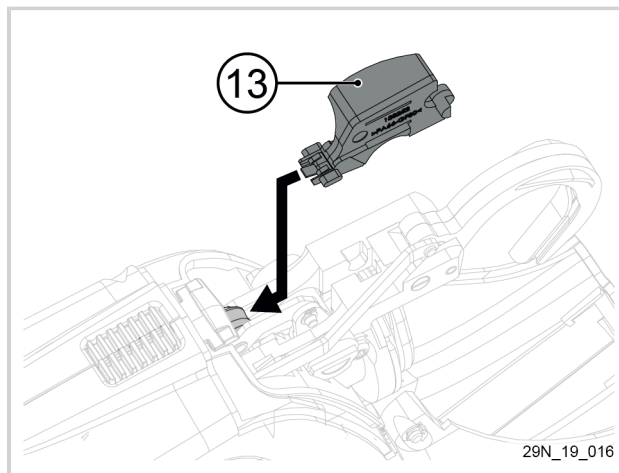
3. Remove the upper guide (13) levering it out with the disgorging scissors (5).



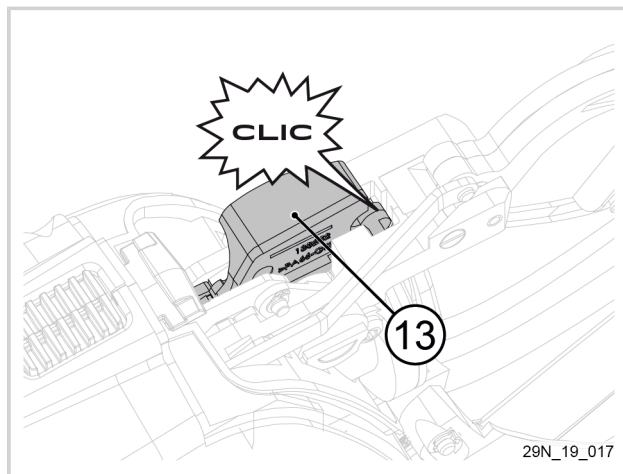
4. Extract the remaining cord with the disgorging scissors (5).



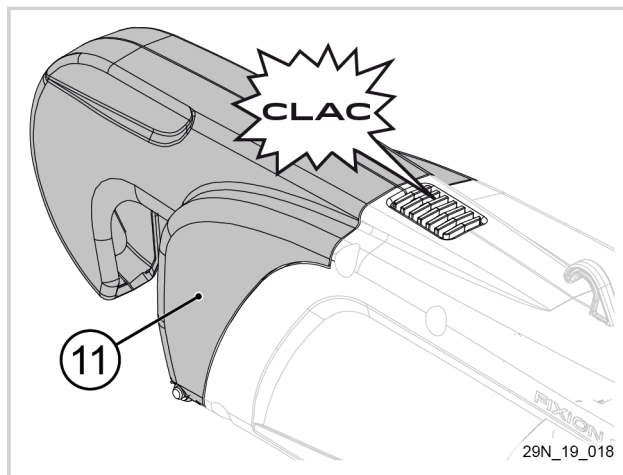
5. Insert the upper guide (13) to the end stop, under the support roller.



6. Clip the upper guide (13) into position.



7. Close the swivel dispenser (11) again.



5.8. CHARGING THE TOOL

5.8.1. INSTRUCTIONS BEFORE CHARGING BUILT-IN BATTERY

Only the battery supplied with the charger must be used. Failing to comply with this instruction leads to premature deterioration of the battery, and increases the risk of physical injury.

Pellenc S.A. declines all responsibility if the charger is used for an application other than that specified.

Important

Before using the battery for the first time at the start of a new season, it must be fully charged (99% steady).


5.8.2. THE DISPLAY SHOWING REMAINING BUILT-IN BATTERY CAPACITY

The battery is equipped with a gauge display (21) which allows you to see the remaining battery capacity. The capacity is expressed as a percentage.

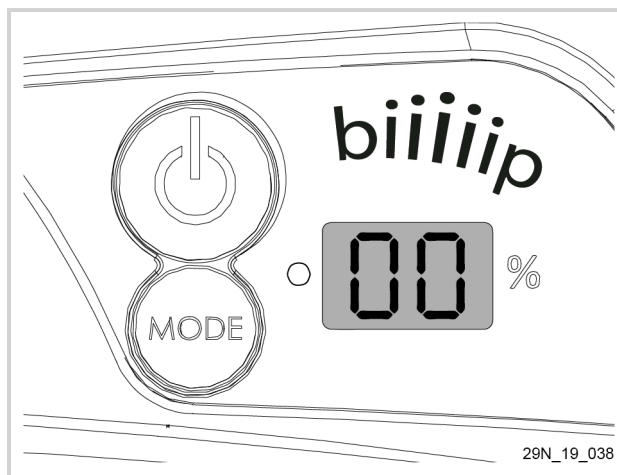
- If the display (21) shows **99**, the battery is fully charged.
- If after a day's work, the display (21) shows **55** there is no need to recharge the battery.
- If the display (21) shows **00**, or very close to it, it must be recharged at once.
- The battery gauge (21) must be used like a fuel gauge on a car.

5.8.3. CHARGING THE BUILT-IN BATTERY

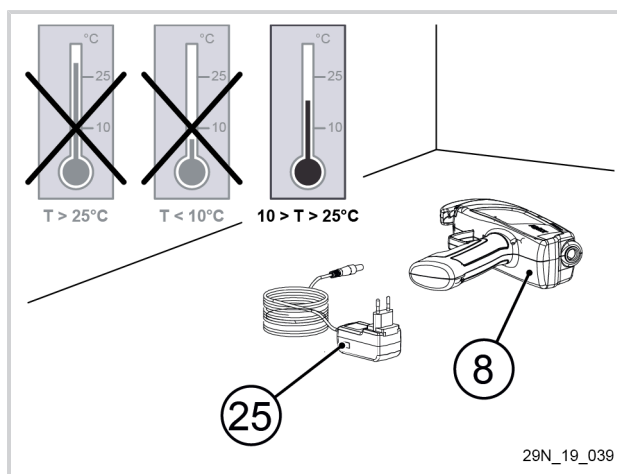
Important

 The tool battery must be charged only using the tns30w-126050 charger supplied in the case.

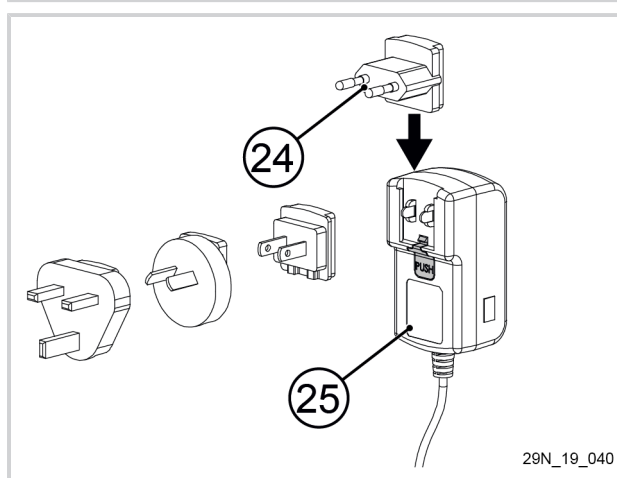
1. When the battery is discharged, the tool stops automatically. The gauge display goes off and the buzzer beeps once (see Section 7.3, “Summary of charge indicator and beep messages”).



2. Place the charger (25) and tying machine (8) in a dry, ventilated and dust-free room at 10#25°C.



3. Use the correct adaptor (24) on the charger (25) according to your own country's standard. Press on the “PUSH” button to remove an adapter.

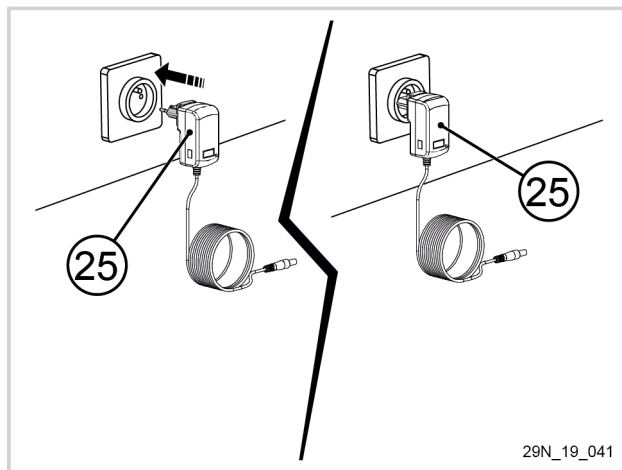


4. Connect the charger connector (25) to the mains.
The charger LED lights up green.

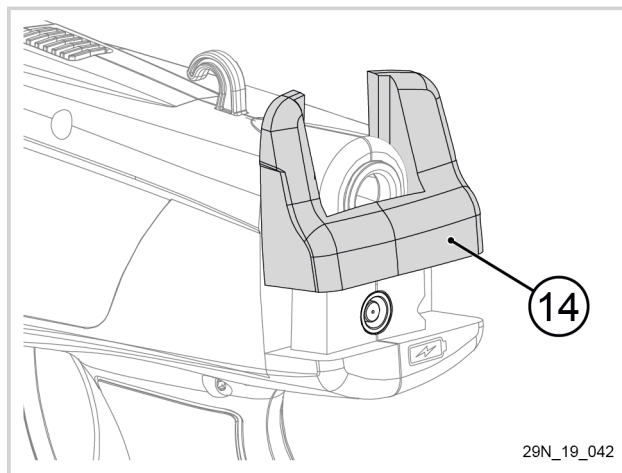


Caution

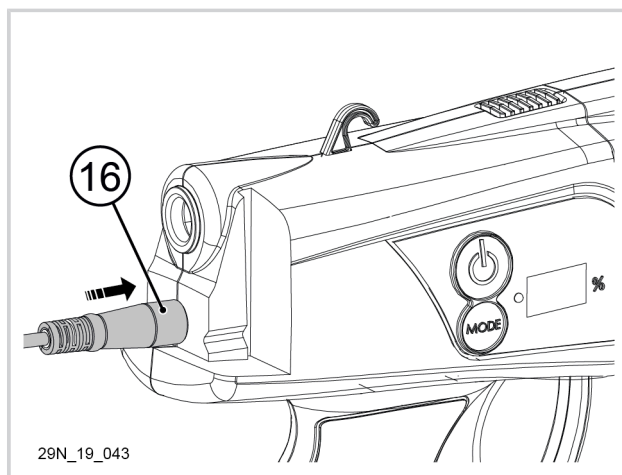
Ⓒ Before connecting the charger to the mains, check that your power system characteristics comply with the specifications given on the charger (see Section 3.2, “Technical features”).



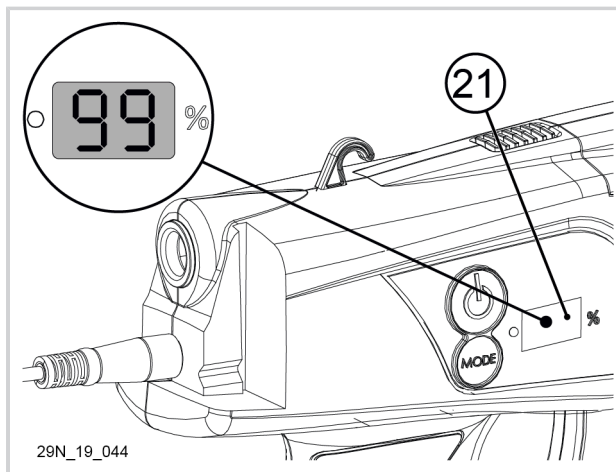
5. Partly detach the guard (14) (or the adaptable dispenser (6)). If the adaptable spout (6) is fitted, make sure the tie has been withdrawn from the tool intake opening.



6. Connect the charging cord to the tying machine's charging connector (16). The charger LED turns red.



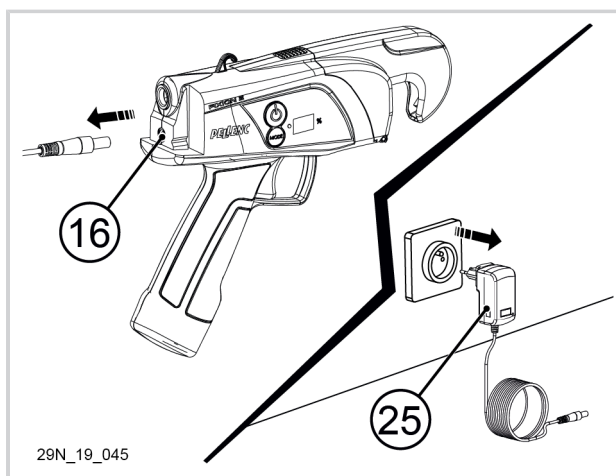
7. When the gauge display (21) flashes, the battery is charging. Charging is complete when the message 99 appears steadily on the gauge display (21).



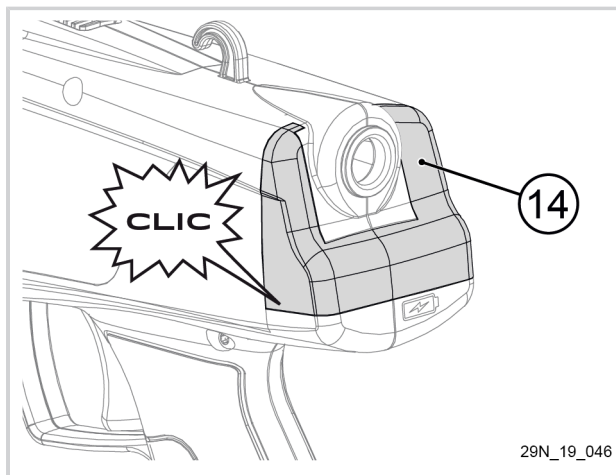
8. Once the battery is charged, disconnect the charging lead on the battery first (16), then the charger mains connector (25).

Note

After a long storage period (new battery, winter storage etc.), when you disconnect the charger, the charge level indicator may display a value of less than 99%. This is a normal phenomenon which can reoccur for up to 5 charge cycles with normal use between each charge.



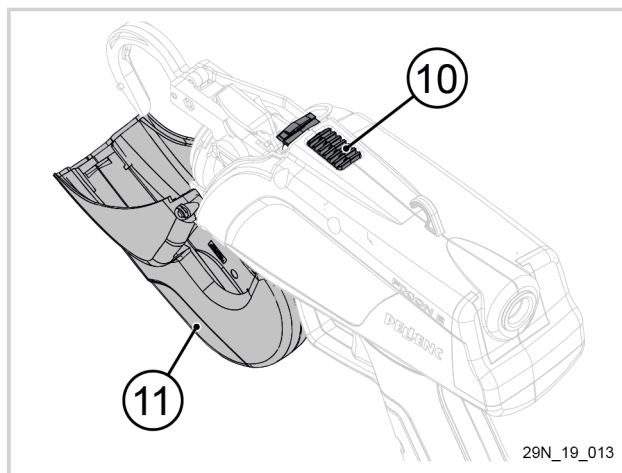
9. Replace the guard (14) on the back of the tying machine (or the adaptable dispenser (6)).



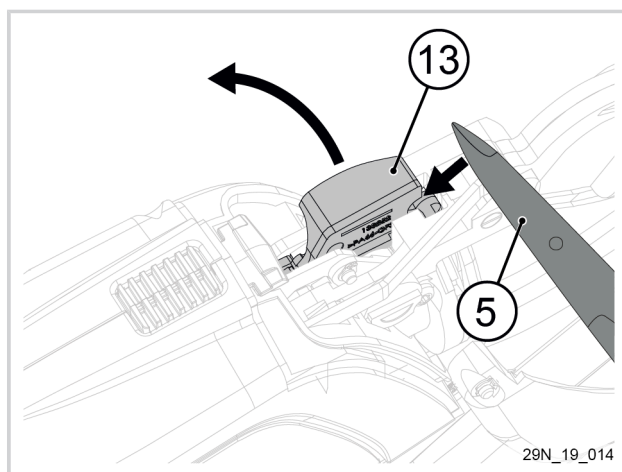
6. MAINTENANCE

6.1. INTERNAL CLEANING OF FIXION 2

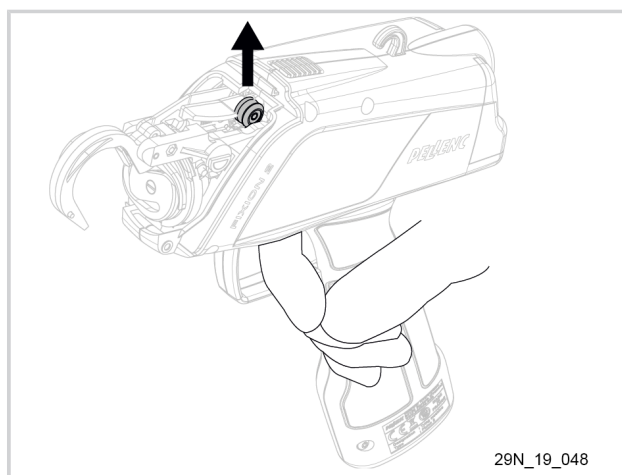
1. Turn on the tying machine (on/off button (20), see Section 5.1, "Tying machine on/off").
2. Open the swivel dispenser (11) with the lock/unlock button (10).



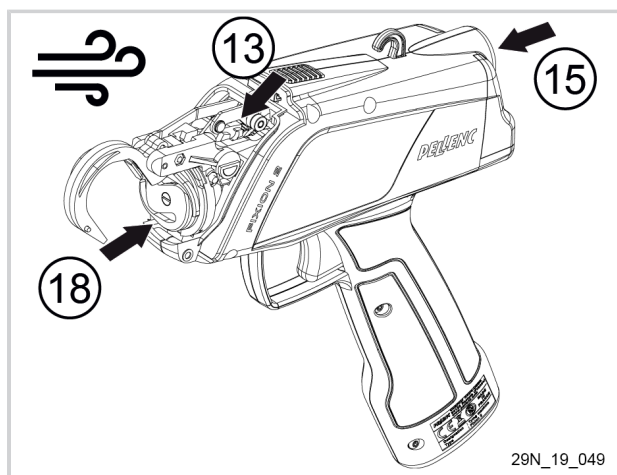
3. Remove the upper guide (13) levering it out with the disgorging scissors (5).



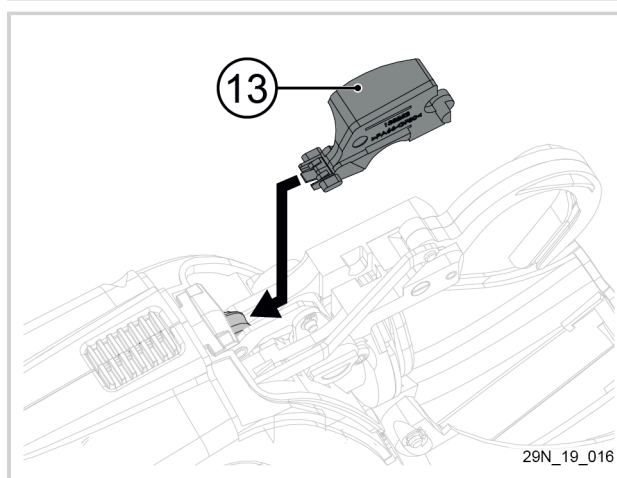
4. Press and hold the trigger for 4 seconds to remove the support roller.
5. Turn off the tying machine (start/stop button (20), see Section 5.1, "Tying machine on/off").
6. Extract the support roller.



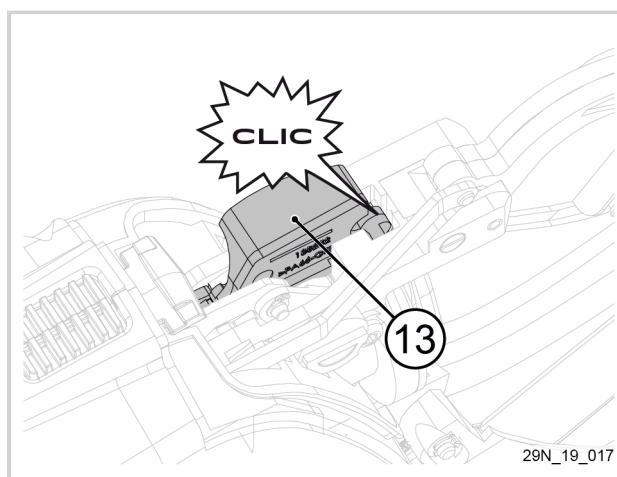
7. Using an air compressor, blow:
 - a. In front of the twister (18)
 - b. Inside the cord inlet (15)
 - c. At the upper guide (13), towards the front.
8. Refit the support roller.



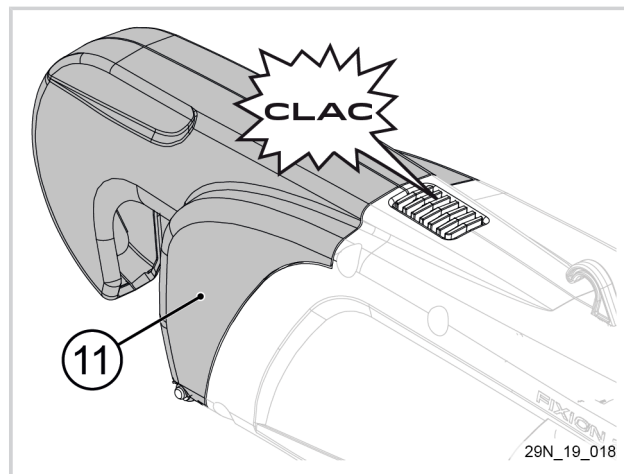
9. Insert the upper guide (13) to the end stop, under the support roller.



10. Clip the upper guide (13) into position.



11. Close the swivel dispenser (11) again.



6.2. CHARGER

This does not need any particular maintenance, but must be kept in a dry, ventilated, dust-free place, away from heat.

6.3. MISC. MAINTENANCE

Make sure your tying machine continues to work properly by cleaning it often, to do this.

- Keep the tie passage clean, by using compressed air through the front part and inside the machine. Avoid using solvents such as trichlorethylene, white spirit, petrol, etc. If necessary, remove the upper guide (13) and hold the trigger (19) for about 3 seconds to release the rod in its max upper position. Once cleaning is finished, press the trigger (19) to return the tie hook (12) to its initial position, and replace the upper guide (13).



Caution

Do not oil the central part where the cord passes through, as this could cause a malfunction.

- Do not leave the tying machine on the ground or exposed to the elements.
- At least once a year, or every 300,000 ties, return your tying machine in its original packaging to an approved repair shop, for a proper overhaul to ensure a long life for your tool.

Spares references:

Fixion 2 maintenance kit: Ref. 140588

6.4. BUILT-IN BATTERY REPLACEMENT



Warning

© The battery must be replaced only by an approved distributor.

7. INCIDENTS AND TROUBLESHOOTING

7.1. BUILT-IN BATTERY

If your tying machine no longer works:

- Checking nothing is blocking the passage of the tie: Repeat the procedure in the Section 5.7, "End of coil".
- Check the battery charge level.
- Press the tool on/off button.
- If the tying machine still does not work, return the complete equipment in its original packaging to a certified repair service.



Warning

Ⓒ Never try to open one of the components other than those specified in this manual.

7.2. CHARGER

If the indicator light does not come on when charging:

- Disconnect the charger power connector.
- Check the mains supply.
- Reconnect the charger power connector (if the charger still does not work, return the complete equipment in its original packaging to a certified repair service).



Warning

Ⓒ Never try to open one of the components other than those specified in this manual.

7.3. SUMMARY OF CHARGE INDICATOR AND BEEP MESSAGES

Normal messages	
Use	
88 fixed	Battery charge level (0 to 99)
00 with 1 beep per minute	Battery empty, recharge immediately
00 flashing with 1 beep every 10 seconds	Stop using, recharge immediately
Charging	
88 flashing every 4 seconds	Battery charge level (0 to 99)
99 fixed	Charging complete
Storage	
88 flashing	Auto discharge indicator after 10 days unused (final threshold <30%).

Degraded mode messages	
Use	
°C and 55 alternately	Stop the tool; the battery temperature is too high

Degraded mode messages	
1 long beep and 1 short beep	Stop the tool: current too high
1 long beep and 4 short beeps	Stop the tool; the tool temperature is too high
Charging	
°C and 00 alternately	Charge interrupted: Battery temperature too low
°C and 45 alternately	Charge interrupted: Battery temperature too high

Fault messages	
Use	
88 and 1 beep every 2 minutes for 24 hours	Voltage too low after 3 hours of non-use. Recharge battery immediately
Charging	
Pb and bR alternating and continuous beep	Battery problem
Pb and CH alternately	Charger problem

If your tool no longer works:

1. Turn off the tool with the off button (power indicator light off).
2. Check the battery is charged, as shown on the gauge display.
3. Checking nothing is blocking the passage of the tie: Repeat the procedure in the Section 5.7, "End of coil".
4. Clean the tool (see Section 6, "Maintenance").
5. Turn on the tool with the on button (power indicator light on).
6. Press the trigger.
7. If the tool does not work, return the complete equipment in its original packaging to a certified repair service.

Important

Ⓒ Never attempt to dismantle the tying machine, under penalty of cancellation of the warranty. Contact your authorised repair person.

8. STORAGE AND TRANSPORT

8.1. STORAGE

- Store the pruning shears, battery unit and charger in their carry-case, away from heat, dust and damp, and check the battery is properly turned off.
- Never store the battery at an ambient temperature of more than +45 °C.
- In order to conserve a long battery life and prevent deterioration, the battery must be charged when stored and recharged every 24 months if it is not used.
- Never operate the switch while the shears are in storage.
- In the OFF-SEASON, you may have your pruning shears serviced by an authorised repairer. For more information, consult an authorised distributor or contact PELLENC S.A.
- The battery must be stored in a dry place, at a steady temperature between 0 °C and +25°C. No combustible object must be placed within 1.5 metres of the battery.

9. ACCESSORIES AND CONSUMABLES

Spare parts	Part number
Maintenance kit	140588
Dispenser rotation axis	149062
Screws	149063
Lower guide	133144
Upper cutting guide	17832

10. WARRANTIES

10.1. GENERAL WARRANTIES

10.1.1. STATUTORY WARRANTY

- 10.1.1.1. LATENT DEFECTS WARRANTY

Apart from the commercial warranty provided for under Article II, Article 1641 of the Civil Code provides that "the seller is bound to a warranty on account of latent defects of the object sold which render it unfit for the use for which it was intended, or which would impair said use to the extent that the buyer would not have acquired it, or would not have given a lesser price for it, had he known of them".

Article 1648 of the Civil Code "The action resulting from latent defects must be brought by the purchaser within two years after the discovery of the defect. "

- 10.1.1.2. LEGAL WARRANTY OF CONFORMITY

Article L.217-4 of the Consumer Code "The seller delivers goods in conformity with the contract and is liable for defects of conformity existing upon delivery.

The seller is also liable for any lack of compliance resulting from the packaging, assembly or installation instructions whenever its contractual liability is engaged in this regard or the latter are carried out under its responsibility

Article L.217-5 of the French Consumer Code "Goods are compliant with the contract":

1. Where they are fit for the purpose normally expected of similar goods and, where applicable:
 - If it matches the description given by the seller and possesses the qualities that were presented to the purchaser in the form of a sample or model;
 - If it possesses the qualities that a purchaser can reasonably expect given the public statements made by the seller, the producer or its representative, especially in advertising or labelling;
2. Or, if it has the characteristics defined by mutual agreement of the parties or is fit for any particular purpose that the buyer made known to the seller and that the latter accepted.

Article L.217-12 of the Consumer Code "legal action resulting from lack of conformity lapses two years after delivery of the goods".

10.1.2. COMMERCIAL WARRANTY PELLENC

- 10.1.2.1. CONTENT

10.1.2.1.1. GENERAL INFORMATION

In addition to legal warranties, client users benefit from the commercial warranty on products PELLENC covering the exchange and replacement of parts recognised as being out of order, due to machining defects, assembly defects or material defects, whatever the cause.

The warranty is fully integral to the product sold by PELLENC.

10.1.2.1.2. SPARE PARTS

The commercial warranty also covers original PELLENC spare parts, excluding labour and to the exclusion of certain parts of each product provided at delivery.

- 10.1.2.2. DURATION OF THE WARRANTY**10.1.2.2.1. GENERAL INFORMATION**

PELLENC Products are guaranteed under the commercial warranty as from delivery to the customer for a period of two (2) years for products connected to a PELLENC battery, and for a period of one (1) year for other PELLENC products.

10.1.2.2.2. SPARE PARTS

PELLENC Replacement parts replaced under the product warranty are guaranteed under the commercial warranty as from delivery of the PELLENC product to the customer user for a period of two (2) years for products connected to a PELLENC battery, and for a period of one (1) year for other PELLENC products.

In the case of products connected to a PELLENC battery, parts that are replaced under the product warranty after the 12th month of use, are covered for a period of one (1) year.

10.1.2.2.3. WARRANTY EXCLUSIONS

Excluded from the commercial warranty are products that have been subject to abnormal use, or were used under conditions and for purposes other than those for which they were manufactured, especially in the case of non-compliance with conditions stipulated in this user manual.

It does not apply in case of shock, fall, neglect, lack of supervision or maintenance or in case of transformation of the product. Also excluded from the warranty are products that have been subject to tampering, alteration or modification by the client user.

Wear parts and/or consumables cannot be covered by the warranty.

- 10.1.2.3. IMPLEMENTATION OF THE COMMERCIAL WARRANTY**10.1.2.3.1. PRODUCT COMMISSIONING AND COMMISSIONING DECLARATION**

The DISTRIBUTOR undertakes to complete the computer commissioning declaration form, no later than eight days after the delivery of the property to the user customer, in order to activate the latter on the www.pellenc.com website under "warranties and training" in the "extranet" menu, using the identifier previously provided to them by PELLENC.

Failing that, commissioning declaration will not be effective and implementation of the commercial warranty PELLENC will not occur. As a consequence thereof, the DISTRIBUTOR must ensure the financial burden of its intervention under the warranty without being able to pass on the cost to the client user.

The DISTRIBUTOR shall also undertake to complete the warranty card or the certificate of warranty and commissioning for self-propelled equipment provided with the product after having the client user sign and date it.

10.1.3. PAID AFTER-SALES SERVICE**- 10.1.3.1. GENERAL INFORMATION**

Malfunctions, breakdowns, breakages resulting from misuse, neglect or improper maintenance by the client user as well as malfunctions resulting from normal wear of the product are subject to the payment of after-sales service, even during the period of the legal and commercial warranty. After-sales service repairs that fall outside of the legal and commercial warranty also include maintenance, adjustments, diagnostics of all types, and cleaning without the present list being exhaustive.

- 10.1.3.2. WEAR PARTS AND CONSUMABLES

Wear parts and consumables also fall within the after-sales service.

- 10.1.3.3. SPARE PARTS

Paid after-sales service also covers original PELLENC spare parts, excluding labour and outside the legal and commercial warranty period.

In case of replacement of original PELLENC spare parts in the context of after-sales service, said latter are covered by a warranty of one year as from the installation date.

11. EC STATEMENT OF COMPLIANCE

11.1. "EC" DECLARATION OF CONFORMITY: FIXION 2

MANUFACTURER	PELLENC
ADDRESS	Quartier Notre-Dame - 84120 Pertuis (France)
ENTITY AUTHORIZED TO COMPILE THE TECHNICAL FILE	PELLENC
ADDRESS	Quartier Notre-Dame - 84120 Pertuis (France)

We hereby declare that the machine referred to below as:

GENERIC DENOMINATION	Tying machine
FUNCTION	Intended to attach vine shoots
COMMERCIAL NAME	FIXION 2
TYPE	FIXION 2
MODEL	FIXION 2
SERIAL No.	29U00001 - 29U49999 29V00001 - 29V49999 29W00001 - 29W49999

Complies with the relevant provisions of the machinery directive (2006/42/EC).

Complies with the provisions of the following European directives:

- 2014/53/EU RED Directive
- 2014/30/EU EMC Directive
- 2011/65/EU ROHS Directive
- 1907/2006 REACH Regulation
- 2012/19/EU WEEE Directive
- 2006/66/CE Batteries and Accumulators Directive

The following harmonised European standards have been used in whole or in part:

<ul style="list-style-type: none"> • EN 62841-1: 2015 • EN 62133: 2013 • EN 55014-1: 2017 	<ul style="list-style-type: none"> • EN 61000-3-2: 2014 • EN 61000-3-3: 2013 • EN 55014-2: 2015
----------------------------------------------------------------------------------------------------------------------------	----------------------------------------------------------------------------------------------------------------------------------

Total vibration values (triax vector sum) determined in accordance with the EN 62841-1 standard (uncertainty of K=1.5 m/s ²)	$a_h < 2.5 \text{ m/s}^2$
------------------------------------------------------------------------------------------------------------------------------------------	---------------------------

Acoustic power level measured (uncertainty of K=3 dB)	$L_{WA} = 80 \text{ dB}$
Level of acoustic pressure measured at the work station (uncertainty of K=3 dB)	$L_{pA} = 69 \text{ dB}$

SIGNED IN PERTUIS, DATED 18/06/2019

JEAN-MARC GIALIS

CEO



PELLENC

   www.pellenc.com

PELLENC
Quartier Notre Dame - 84120 Pertuis (France)

