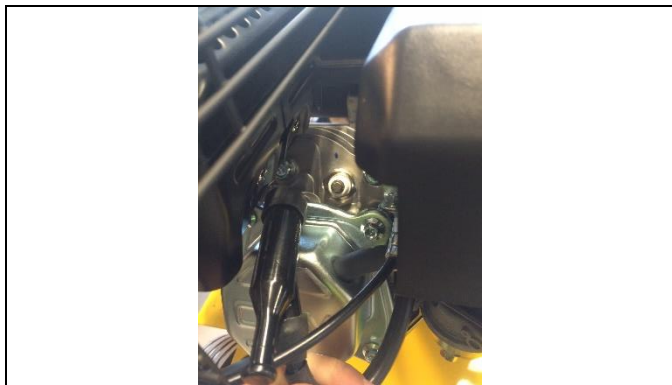


Samvejledning • Assembly instructions

Art. no. 412245



1

DK:
Udskiftning af ribrem 412245, position 25.
VIGTIGT!
Start med at afmontere tændrørshætten, så maskinen ikke starter under udskiftning

ENG:
Replacement of ribbelt 412245, position 25.
IMPORTANT!
Dismount the spark plug lead, to ensure that the machine does not start during replacement.

2

DK:
Afmonter rem cover, ved at løsne boltene på siden

ENG:
Remove the belt cover by loosening the bolts on the side



3

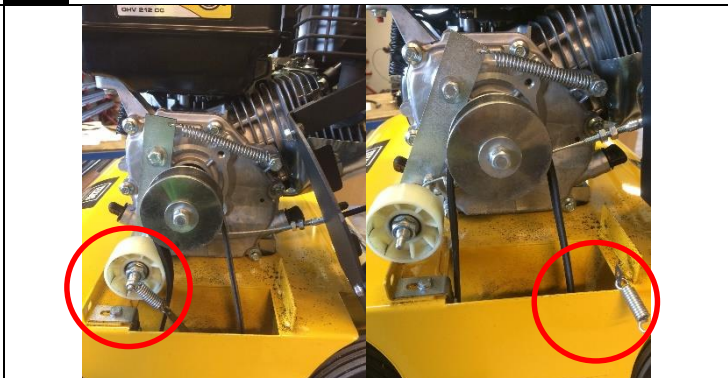
DK:
Afmonter under rem cover, ved at løsne to bolte på siden af maskinen

ENG:
Remove the lower belt cover by loosening the bolts on the side of the machine

4

DK:
Afmonter rem hus, ved at løsne boltene på siden

ENG:
Remove the belt housing by loosening the bolts on the side



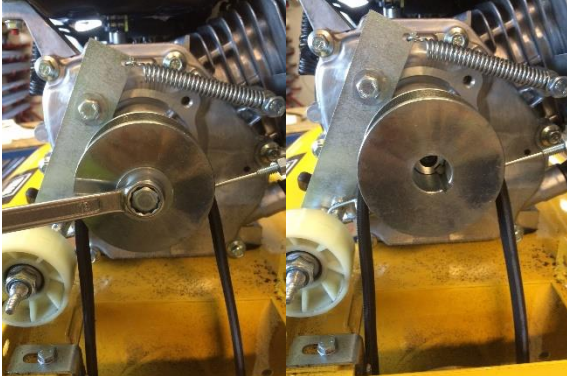
5

DK:

Afmonter rem hus, ved at løsne koblingskabel og trække huset mod styret.

ENG:

Remove the belt housing by loosening the clutch cable and drag the housing towards the handlebars



6

DK:

Afmonter bremsebæltet ved at fjerne låsemøtrikken og trække fjederen af strammerullearmen

ENG:

Remove the brake belt by removing the lock nut and drag the spring off the tightening pulley



7

DK:

Afmonter øverste remskive

ENG:

Remove the top pulley



8

DK:

Remmen glides forbi nederste remskive og afmonteres

ENG:

Slide the belt past the lower pulley and remove from the machine



9

DK:

Ny remmen glides op forbi nederste remskive og monteres på top remskive. Remskiven genmonteres på motoren

ENG:

Slide the new belt past the lower pulley and mount the top pulley

10

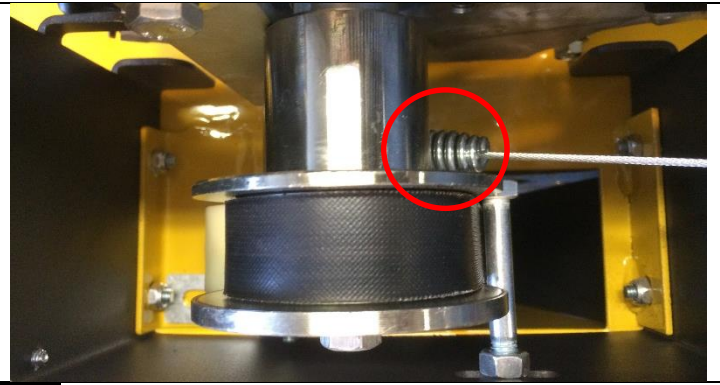
DK:

Fjeder for bremsebælte genmonteres på stramrullearmen

ENG:

The spring for the brake belt is reassembled on the tightening pulley





11

DK:

Rem huset glides tilbage på plads og genmonteres.
Koblingskabel fastsættes i rem huset

ENG:

The belt house is slide back into place and remounted.
The clutch cable is mounted in the housing

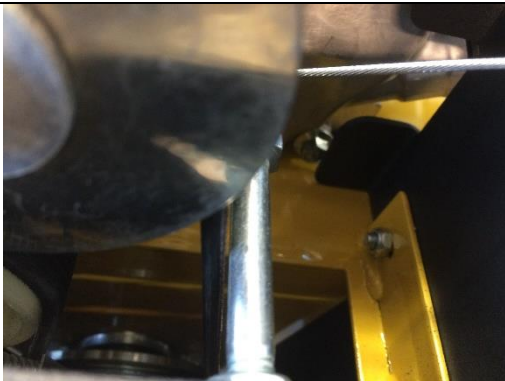
12

DK:

Koblingskabel skal justeres således at fjederen i kablet åbner sig 1-2 mm ved tilkobling.

ENG:

The clutch cable is adjusted so that the spring in the end of the cable opens 1-2 mm when clutched in.



13

DK:

Remstys bolten justeres således at når remmen er koblet til er der 1-2 mm afstand imellem rem til bolt.

ENG:

The belt guide is adjusted by leaving 1-2 mm of air between the belt and the bolt when the belt is clutched in.

14

DK:

Genmonter rem cover samt tændrørshætte

ENG:

Assemble belt cover and spark plug lead