

# REPAIR PARTS MANUAL

## 30" - 8 H.P. LAWN TRACTOR

### MODEL C3554-080

#### ONE YEAR LIMITED WARRANTY

For one (1) year from date of purchase by the first consumer for residential use (thirty (30) days commercial use), NOMA Outdoor Products Incorporated warrants that it will replace free of charge, including labor, any original part of any NOMA Outdoor Products Incorporated product found to be defective by any authorized Service Dealer or the factory, except the battery which is warranted for ninety (90) days from date of purchase.

This warranty does not cover engine, transmission, transaxle or differential (these items are covered by their manufacturer's own warranty). This warranty does not cover parts that have failed due to normal wear or parts that have failed subject to misuse or abuse. Transportation of the unit or part to and from an authorized Service Dealer or factory is the responsibility of the owner.

A step by step explanation as to what procedure should be followed for this warranty is:

1. If a part becomes defective, contact the store where the unit was purchased for the name and address of the authorized Service Dealer nearest to you.
2. If you cannot locate an authorized Service Dealer, write Service Department of NOMA Outdoor Products Incorporated for the name and address of the authorized Service Dealer in your area or call the Service Department at 1-901-422-1690.
3. Return the defective product, along with proof of purchase to such authorized Service Dealer for replacement of any defective part where covered by this warranty.

There is no other express warranty. Implied warranties, including those of merchantability and fitness for a particular purpose are limited to one (1) year from date of purchase. Liability for incidental or consequential damages are excluded.

Some states do not allow limitations on how long an implied warranty lasts, so the above limitation may not apply to you. Some states do not allow the exclusion of incidental or consequential damages, so the above exclusion may not apply to you. This warranty gives you specific legal rights, and you may have other rights which vary from state to state.

**NOMA Outdoor Products Incorporated**

**Caller 8000**

**Jackson, TN 38308-8000**

#### UNIT PARTS AND SERVICE

Fill in and mail the registration card packed with the unit. For service other than covered in this manual, contact an authorized service dealer. A nationwide parts and service organization has been established to provide locally available parts and service. When ordering repair parts, always give the following information: 1. The Part Name; 2. The Part Number; 3. The Quantity desired; 4. The Full (eight digit) Model Number of the unit. The model number will be found on a plate attached to the unit.

Look for this symbol.



It means - **ATTENTION! BECOME ALERT! A HAZARD TO OPERATOR, BYSTANDER, PROPERTY OR EQUIPMENT MAY EXIST.**

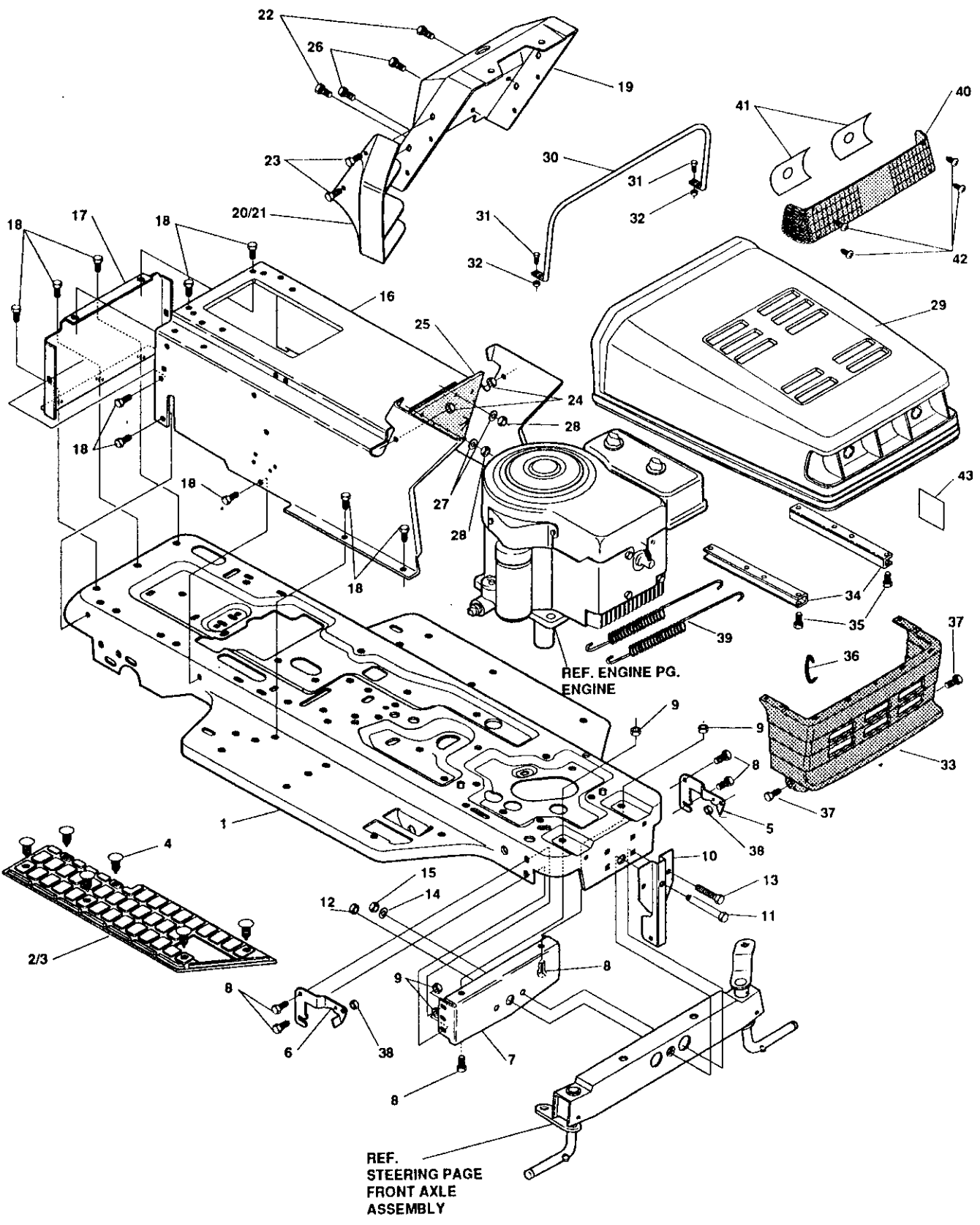
**NOMA Outdoor Products Incorporated**

**Caller 8000**

**Jackson, TN 38308-8000**

# 30" LAWN TRACTOR MODEL C3554-080

## CHASSIS & HOOD ASSEMBLY



**NOTE: ALWAYS USE ORIGINAL EQUIPMENT PARTS.** Use of service/replacement parts other than original equipment parts may void your warranty.

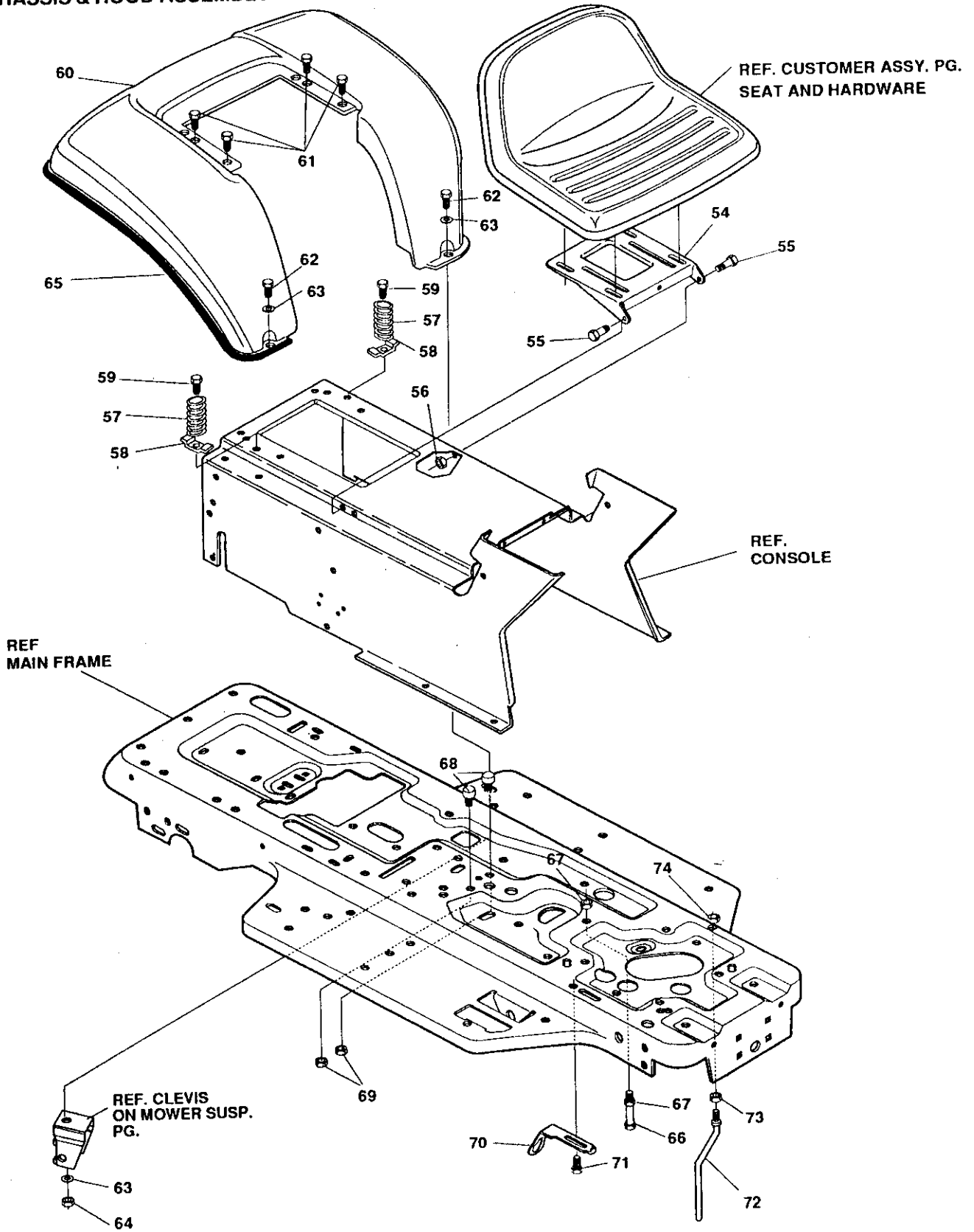
**ALL UNNUMBERED ITEMS ARE INTERCHANGABLE WITH OPPOSITE SIDE**

321981A

# 30" LAWN TRACTOR MODEL C3554-080

Key#	Part#	Description	Qty
1.	314883-889	MP FRAME,MAIN SF RIDER	1
2.	310003	FOOT PAD, LH SF MOLDED DYNA	1
3.	310004	FOOT PAD, RH SF MOLDED DYNA	1
4.	309235	FASTENER, RATCHET BLACK	12
5.	313003-853	ML BRACKET, GRILLE SUPPORT LH	1
6.	313004-853	MP BRACKET, GRILLE SUPPORT RH	1
7.	56362-853	MF BRKT,SUPPORT,FRONT AXLE-SF	1
8.	56030	SCREW, 5/16-18X.75WDFLLK GR5	6
9.	55273	NUT, 5/16-18 HXWDFLLK	6
10.	321136-889	BRACKET, HANGER 30" S.F.	1
11.	50720	BOLT, .625X2.875 SPSH 1/2-20	1
12.	274654	NUT, 1/2-20 REGHXCTRLK GRB	1
13.	122201	SCREW, 3/8-16X2.75 HHC GR2	4
14.	2483	WASHER, 39IDX1.25DX.07 BELLVIL	4
15.	1499	NUT, 3/8-16 REGHXCTRLK	4
16.	309584-889	MP CONSOLE,SF GPWR NOTCHED FEN	1
17.	56235-889	MP CONSOLE, REAR COVER	1
18.	995346	SCREW, 1/4-20X .50 WAHHTAP	15
19.	321980-853	MP DASH,SM.FR.W/O AMMET GPWR	1
20.	302723	INSERT,DASH,LH 11 HP	1
21.	302724	INSERT,DASH,RH 11HP	1
22.	995338	SCREW, 1/4-20X .63 HHWATAP	2
23.	274672	SCREW, 1/4-20X .63 WAHHC GR2	4
24.	51335	NUT, 1/4-20 WDFLWHIZ-LK	4
25.	312306	BAFFLE CONSOLE SOUND EXPORT LF	1
26.	995332	SCREW, 1/4-20X .63WAHHTAPGR2	2
27.	120393	WASHER, FLAT .344X .69X.065	2
28.	1502	NUT, 1/4-20 REGHEXCTRLK	2
29.	307060-689	HOOD, H-12 PLASTIC GREY 861	1
30.	307278	SUPPORT,HOOD H-12 GP 11HP	1
31.	301542	SCREW, 10-24X1.00HWATAPBLKPHOS	4
32.	271166	NUT, #10-24 HEXKEPS	4
33.	302722	GRILL, G-15 GPWR SM LWR GREY	1
34.	302875-953	ML BRACKET,TIE.HOOD & GRILL	2
35.	35055	SCREW, 10-24X.50 SLHWATAPGR2	8
36.	310203	CLIP,HOG RING C-SHAPED	1
37.	56676	BOLT, .375X .580 HSH 5/16-18	2
38.	1498	NUT, 5/16-18 REGHEXCTRLK	2
39.	57478	SPRING, HOOD LATCH	2
40.	305716	LENS 11 HP HAKO SMOKED H-12	1
41.	304979	FOIL, REFLECTOR LENS- BULB	2
42.	57796	SCREW, #6 X .50 PLASTITE/HI-LO	4
43.	301452	FOIL, HEAT REFLECTOR	1
44.	323310	OPERATOR'S MANUAL ENGLISH	1
45.	323309	PARTS MANUAL ENGLISH	1

CHASSIS & HOOD ASSEMBLY



**NOTE: ALWAYS USE ORIGINAL EQUIPMENT PARTS.** Use of service/replacement parts other than original equipment parts may void your warranty.

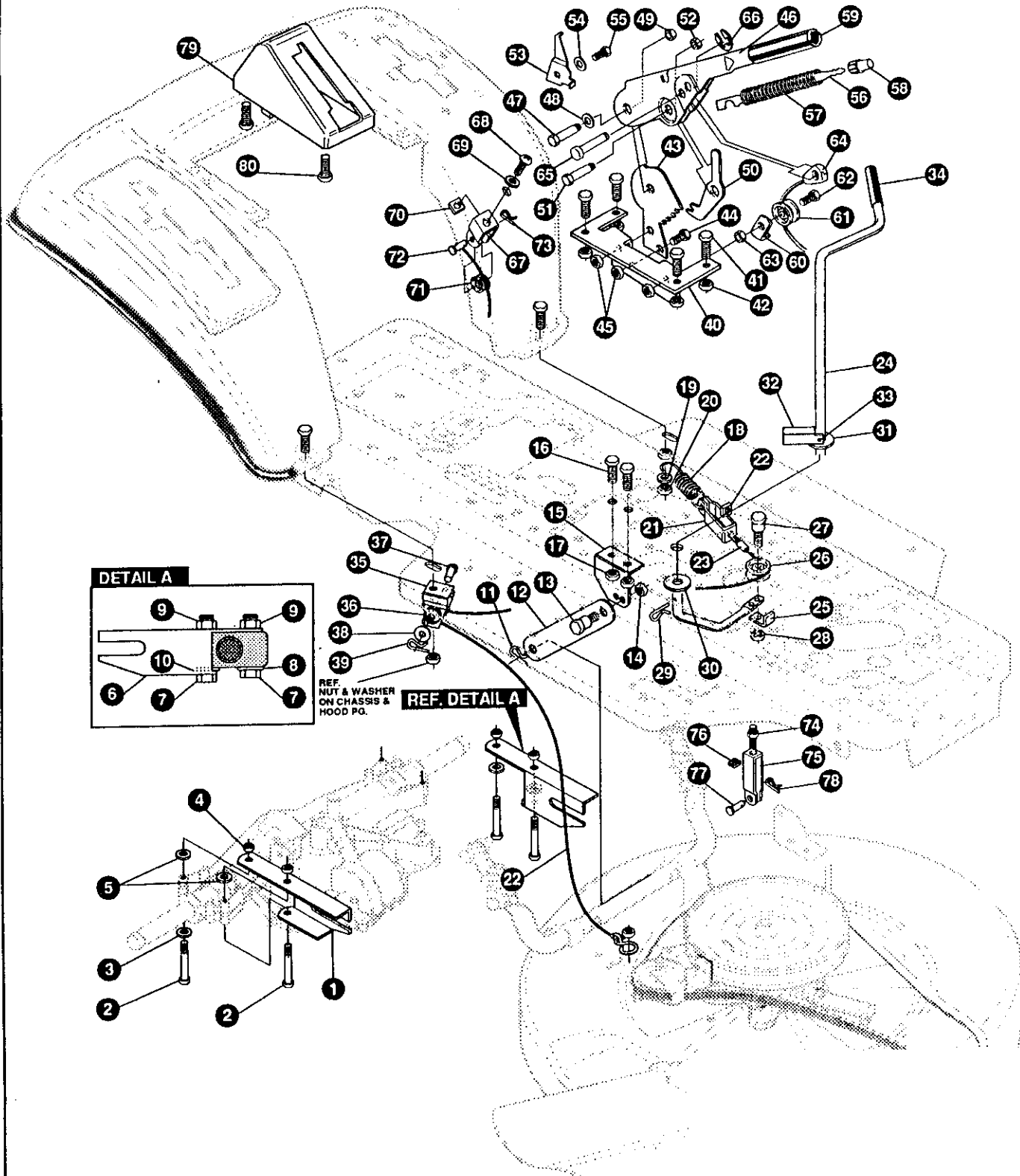
**ALL UNNUMBERED ITEMS ARE INTERCHANGABLE WITH OPPOSITE SIDE**

321981A

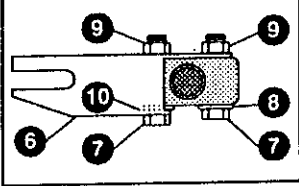
# 30" LAWN TRACTOR MODEL C3554-080

Key#	Part#	Description	Qty.
54.	58367-889	MP PLATE,SEAT F5 SF,LF	1
55.	20507	BOLT, .437X .156 HSH 5/16-18	2
56.	1498	NUT, 5/16-18 REGHEXCTRLK	2
57.	56220	SPRING,1.43X2.38X.162 COM SEAT	2
58.	300284-953	ML CLAMP, SPRING 1.17"ID	2
59.	995346	SCREW, 1/4-20X .50 WAHTAP	2
60.	321156-889	MP FENDER F-5 SF S.O.F./L.O.F.	1
61.	995346	SCREW, 1/4-20X .50 WAHTAP	4
62.	122027	SCREW, 5/16-18X1.25 HHC GR2	2
63.	446363	WASHER, FLAT .375X .88X.082	4
64.	1498	NUT, 5/16-18 REGHEXCTRLK	2
65.	55021	TRIM,STRIP,BLACK—SMALL,W/ ADH	77"
66.	49930	SCREW, 3/8-16X7.50 HHC GR2PL	1
67.	1499	NUT, 3/8-16 REGHXCTRLK	2
68.	53446	PIN, 5/16-18 HOOD LATCH GR2-	2
69.	271184	NUT, 5/16-18 HEXKEPS	2
70.	302610-853	MP BRACKET,SWITCH MOUNTING	1
71.	995346	SCREW, 1/4-20X .50 WAHTAP	1
72.	50653	GUIDE, BELT	1
73.	41529	NUT, 3/8-16 HXCTRLKJAM GRD B.	1
74.	271190	NUT, 3/8-16 HEXKEPS	1

MOWER SUSPENSION ASSEMBLY



DETAIL A



REF. NUT & WASHER ON CHASSIS & HOOD PG.

REF. DETAIL A

**NOTE: ALWAYS USE ORIGINAL EQUIPMENT PARTS.** Use of service/replacement parts other than original equipment parts may void your warranty.

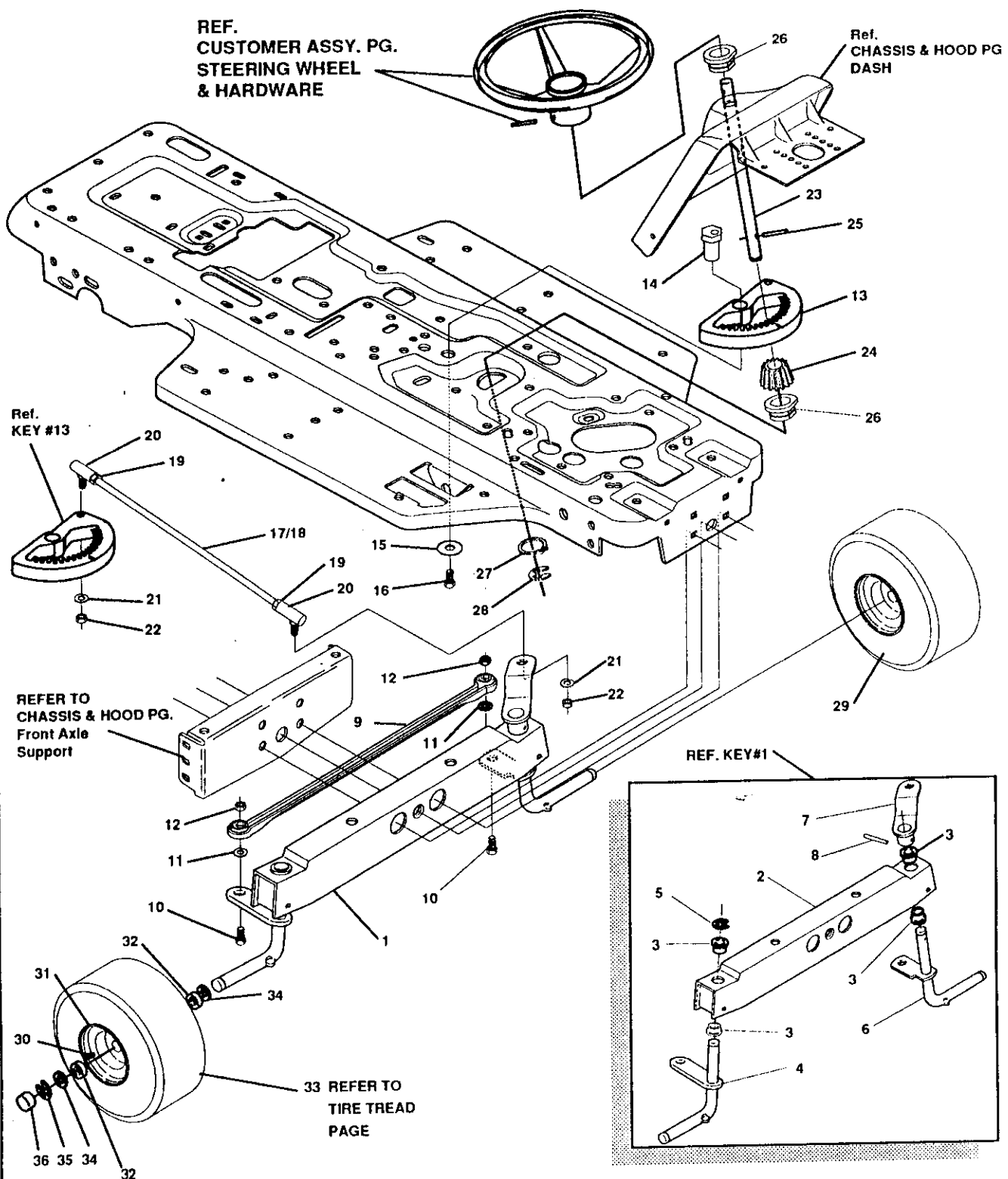
**ALL UNNUMBERED ITEMS ARE INTERCHANGABLE WITH OPPOSITE SIDE**

323276A

# 30" LAWN TRACTOR MODEL C3554-080

Key#	Part#	Description	Qty.
1	313426	BRACKET REAR SUPPORT, RH	1
2	122083	SCREW, 5/16-18X2.75 HHC GR2	2
3	120393	WASHER, FLAT .344X.69X.065	1
4	1498	NUT, 5/16-18 REGHEXCTRLK	2
5	314702	SPACER SLEEVE .344X1.00X.500	2
6	313425	BRACKET REAR SUPPORT, LH	1
7	180089	SCREW, 5/16-18X2.25 HHC	2
8	120393	WASHER, FLAT .344X.69X.065	1
9	1498	NUT, 5/16-18 REGHEXCTRLK	2
10	314702	SPACER, SLEEVE .344X1.00X.500	1
11	56180	PIN, HAIR .091 DIA X 1.62 LG	1
12	314047	BRACKET, LIFT BAR	1
13	313560	BOLT, .500X.225 HSSH 5/16-18	1
14	1498	NUT, 5/16-18 REGHEXCTRLK	1
15	320605	BRACKET, LIFT BAR	1
16	180077	SCREW, 5/16-18X.75 HHC	2
17	1498	NUT, 5/16-18 REGHEXCTRLK	2
18	300473	SPRING TENSION 7.52LG+17LB/IN	1
19	418924	WASHER, FLAT .344X1.13X.062	1
20	1498	NUT, 5/16-18 REGHEXCTRLK	1
21	300703-953	CLEVIS, LIFT CABLE	1
22	120372	NUT, 1/4-20 REGSQ	1
23	322261	CABLE CLUTCH	1
24	322548	LEVER, CLUTCH	1
25	52456-953	BRACKET, CABLE RETAINER	1
26	48306	PULLEY	1
27	58336	BOLT, .375X.375 HSSH	1
28	1502	NUT, 1/4-20 REGHEXCTRLK	1
29	8260	PIN, HAIR .091 DIA 1.66	1
30	996425	WASHER, FLAT .515X.88X.064	1
31	22265	WASHER, FLAT .515X1.38X.119	1
32	12633-953	LF STOP PTO ENGAGEMENT	1
33	455481	PIN, SPRING .187DIA X 1.00 LG HVPL	1
34	46478	GRIP, HAND	1
35	321295-853	CLEVIS, PTO	1
36	48306	PULLEY	1
37	300317	PIN, CLEVIS	1
38	996416	WASHER, FLAT .391X1.00X.125	1
39	8260	PIN, HAIR .091DIA X 1.66 LG	1
40	58333	BRACKET HEIGHT ADJUST	1
41	180077	SCREW, 5/16-18X.75 HHC	4
42	1498	NUT, 5/16-18 REGHEXCTRLK	4
43	301238	QUADRANT, HEIGHT ADJUST	1
44	180077	SCREW, 5/16-18X.75 HHC	2
45	1498	NUT, 5/16-18 REGHEXCTRLK	2
46	322292-853	HANDLE, LIFT HEIGHT ADJUST	1
47	300171	BOLT, .500X.270HSSH 5/16-18	1
48	996418	WASHER, FLAT .506X.75X.024	1
49	44108	NUT, 5/16-18 HWDPLCTRLK	1
50	301239	PAWL, HEIGHT ADJUST	1
51	300171	BOLT, .500X.270 HSSH 5/16-18	1
52	44108	NUT, 5/16-18 HWDPLCTRLK	1
53	300782-953	POINTER, HEIGHT ADJUST	1
54	138479	WASHER, EXLK .195X.41X.03	1
55	35287	SCREW, #8-32X.38 HHWATAPGR2	1
56	303027	ROD, ACTUATOR SHORT	1
57	58326	SPRING HEIGHT ADJUST	1
58	58325	KNOB, HEIGHT PUSH BUTTON	1
59	58329	GRIP, .750 OD W/HOLE BLACK	1
60	58335-953	BRACKET, CABLE RETAINER	1
61	39298	PULLEY, NYLON	1
62	58336	BOLT, .375X.375 HSSH 1/4-20	1
63	1502	NUT, 1/4-20 REGHEXCTRLK	1
64	321430	CABLE, LIFT 20.50	1
65	300310	PIN, CLEVIS	1
66	300311	RING, RET E	1
67	300298-953	CLEVIS	1
68	439455	SCREW, 5/16-18X.56PHPNMA	1
69	301551	WASHER, .344IDX1.50DX.09	1
70	120373	NUT, 5/16-18 SQ	1
71	39298	PULLEY, NYLON	1
72	300317	PIN, CLEVIS .38 DIA. X.81	1
73	8260	PIN, HAIR	1
74	120375	NUT, 1/4-20 REGHEX	1
75	300703-953	CLEVIS, LIFT CABLE	1
76	120372	NUT, 1/4-20 REGSQ	1
77	39522	PIN, CLEVIS .312X.812	1
78	121222	PIN, COTTER	1
79	300335	LIFT COVER-39" F5	1
80	300340	SCREW, #10 X .75 HH PLAST	3

STEERING ASSEMBLY



**NOTE: ALWAYS USE ORIGINAL EQUIPMENT PARTS.** Use of service/replacement parts other than original equipment parts may void your warranty.

**ALL UNNUMBERED ITEMS ARE INTERCHANGABLE WITH OPPOSITE SIDE**

314806E



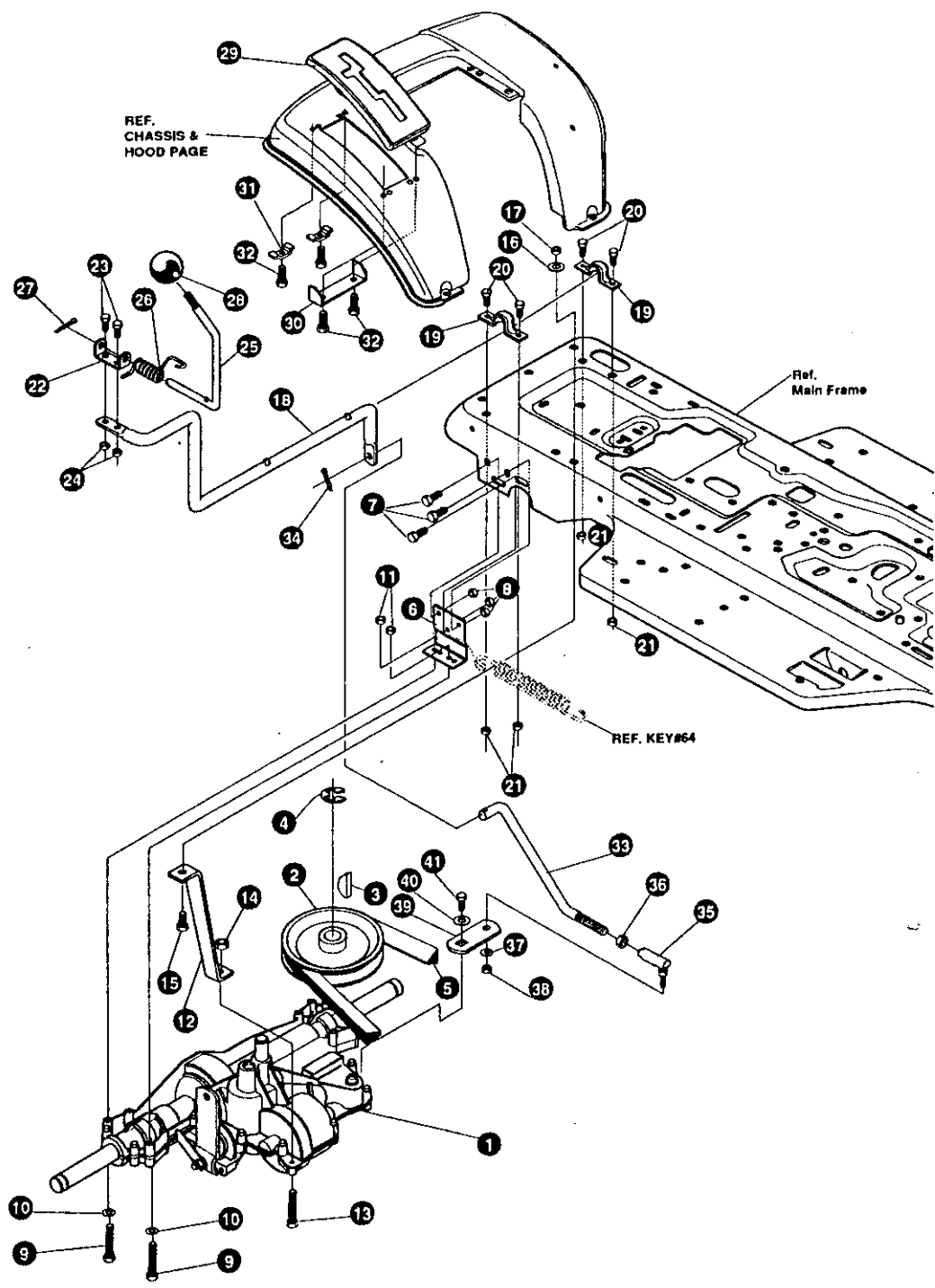
# 30" LAWN TRACTOR MODEL C3554-080

Key#	Part#	Description	Qty.
1	*	FRONT AXLE ASSEMBLY SF	1
2	56400	AXLE, FRONT	1
3	50546	BEARING, FLANGE	4
4	310368	SPINDLE, RH	1
5	36625	RING, RETEX	1
6	310367	SPINDLE, LH	1
7	49447	ARM, STEERING LH	1
8	454565	PIN, SPRING	1
9	302691	TIE ROD	1
10	◇ 122145	SCREW, 3/8-16X1.25 HHC	2
11	◇ 120382	WASHER, .393X.68X.10 REGSPTLK	2
12	◇ 1499	NUT, 3/8-16 REGHCTRLK	2
13	304245	SECTOR, GEAR	1
14	44011	BOLT, .750X1.40 SPSH	1
15	2483	WASHER, .391DX1.25ODX.07	1
16	39573	SCREW, 3/8-24X1.00 NYL	1
17	56191	DRAG LINK ASSEMBLY	1
18	56190	DRAG LINK	1
19	◇ 124925	NUT, 3/8-24 REGHEXJAM	2
20	21275	BALL JOINT	2
21	◇ 120382	WASHER, REGSPTLK	2
22	◇ 120369	NUT, 3/8-24 REGHEX	2
23	44008	STEERING SHAFT	1
24	44009	PINION, STEERING SHAFT	1
25	454565	PIN, SPRING	1
26	54902	BEARING, 1.370X.50 FLANGE STEERING	2
27	39492	RING, RETEX 1.27X.05	1
28	36625	RING, RETEX .57X.05	1
29	41059	ASSEMBLY, TIRE & RIM	2
30	24167	VALVE STEM	1
31	39937	WHEEL W/BEARING	1
32	39979	BEARING, 1.38ODX.753ID FLANGE	2
33		REFER TO TIRE TREAD PAGE	
34	642	WASHER, FLAT .755X1.31X.075	4
35	36625	RING, RETEX .57X.05	2
36	40394	HUB CAP	2

◇ Indicates STANDARD HARDWARE ITEMS.  
 \* ORDER INDIVIDUAL PARTS.

# 30" LAWN TRACTOR MODEL C3554-080

## MOTION DRIVE ASSEMBLY



**NOTE: ALWAYS USE ORIGINAL EQUIPMENT PARTS.**  
Use of service/replacement parts other than original equipment parts may void your warranty.

**ALL UNNUMBERED  
ITEMS ARE INTERCHANGABLE  
WITH OPPOSITE SIDE**

321948B

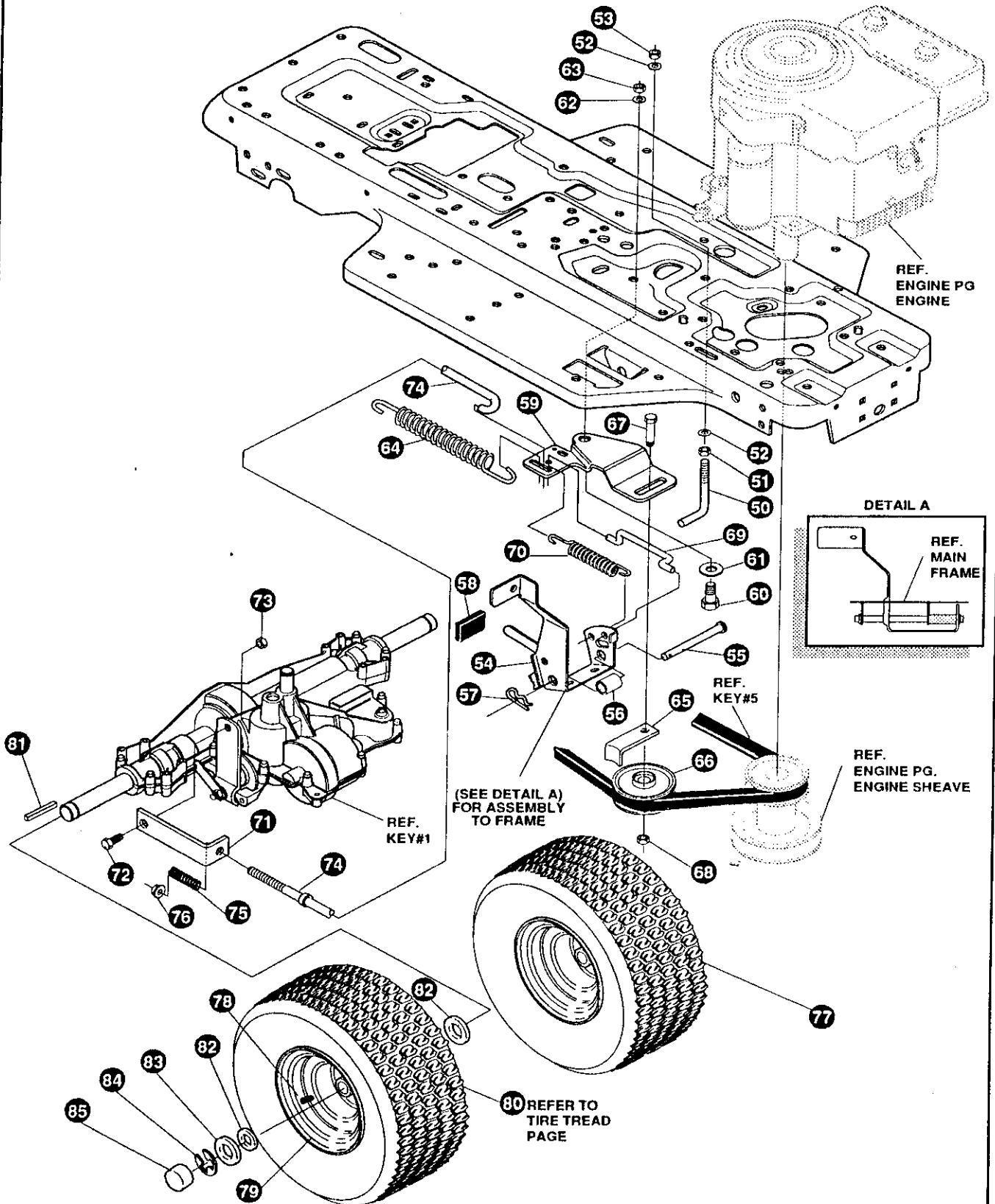
# 30" LAWN TRACTOR MODEL C3554-080

Key#	Part#	Description	Qty.
1.	-	TRANSAXLE P915-5SP SF FER	1
2.	302745	PULLEY, IDLER V4L 6.60X	1
3.	3021	KEY, WDRF 606 .750X.187X.312	1
4.	22053	RING, RETEX .58X.035TRU5100-62	1
5.	54758	BELT, V 4L 82.00 SF DRIVE	1
6.	53768-853	MP BRACKET,TRANSAXLE	2
7.	120228	SCREW, 5/16-18X .63 HHC GR2	6
8.	1498	NUT, 5/16-18 REGHEXCTRLK	6
9.	180089	SCREW, 5/16-18X2.25 HHC GR5	4
10.	120393	WASHER, FLAT .344X .69X.065	4
11.	1498	NUT, 5/16-18 REGHEXCTRLK	4
12.	313587	MF BRACKET, T/A TORQ. 915 S/F	1
13.	180087	SCREW, 5/16-18X2.00 HHC GR5	1
14.	1498	NUT, 5/16-18 REGHEXCTRLK	1
15.	122017	SCREW, 5/16-18X1.00 HHC GR2	1
16.	138485	WASHER, EXLK .320X.61X.03	1
17.	1498	NUT, 5/16-18 REGHEXCTRLK	1
18.	321849	LEVER, SHIFT LOW SF FNSFT 915	1
19.	302760	MS,MF CLAMP .625DIA	2
20.	180075	SCREW, 5/16-18X .63 HHC GR5	4
21.	1498	NUT, 5/16-18 REGHEXCTRLK	4
22.	310213-953	BRACKET,PIVOT SHIFT LEVER LFSF	1
23.	180018	SCREW, 1/4-20X .62 HHC GR5	2
24.	1502	NUT, 1/4-20 REGHEXCTRLK	2
25.	309635	LEVER, SHIFT UPPER SOF 1/2-13	1
26.	310265	SPRING, TORS. .56X.95X.095	1
27.	137185	PIN, COTTER .125 DIA X1.00LG	1
28.	55514	KNOB, ROUND 1.50 DIA BLACK	1
29.	311209	COVER PLASTIC LF P930/F4360-6	1
30.	311257-853	BRACKET COVER F-5 FNDR SHIFT	1
31.	300284-953	ML CLAMP, SPRING 1.17"ID	2
32.	311331	SCREW, 1/4-15X.44/.53 HILOHWA	4
33.	321844	ROD, CONNECTING, SHIFT ZINC	1
34.	137185	PIN, COTTER .125 DIA X1.00LG	1
35.	57158	BALL JOINT 3/8 THD SHORT STUD	1
36.	124925	NUT, 3/8-24 REGHEXJAM	1
37.	120382	WASHER, REGSPTLK.393X.68X.10	1
38.	120369	NUT, 3/8-24 REGHEX	1
39.	323212	BRKT, SHIFT LEVER S/F FND 930	1
40.	57157	WASHER, .750X.250 SP-TRANSAXLE	1
41.	56255	SCREW, 1/4-28X .75 NYLHHCGR8	1

\* ORDER INDIVIDUAL PARTS.

# 30" LAWN TRACTOR MODEL C3554-080

## MOTION DRIVE ASSEMBLY



**NOTE: ALWAYS USE ORIGINAL EQUIPMENT PARTS.**  
Use of service/replacement parts other than original equipment parts may void your warranty.

**ALL UNNUMBERED  
ITEMS ARE INTERCHANGABLE  
WITH OPPOSITE SIDE**

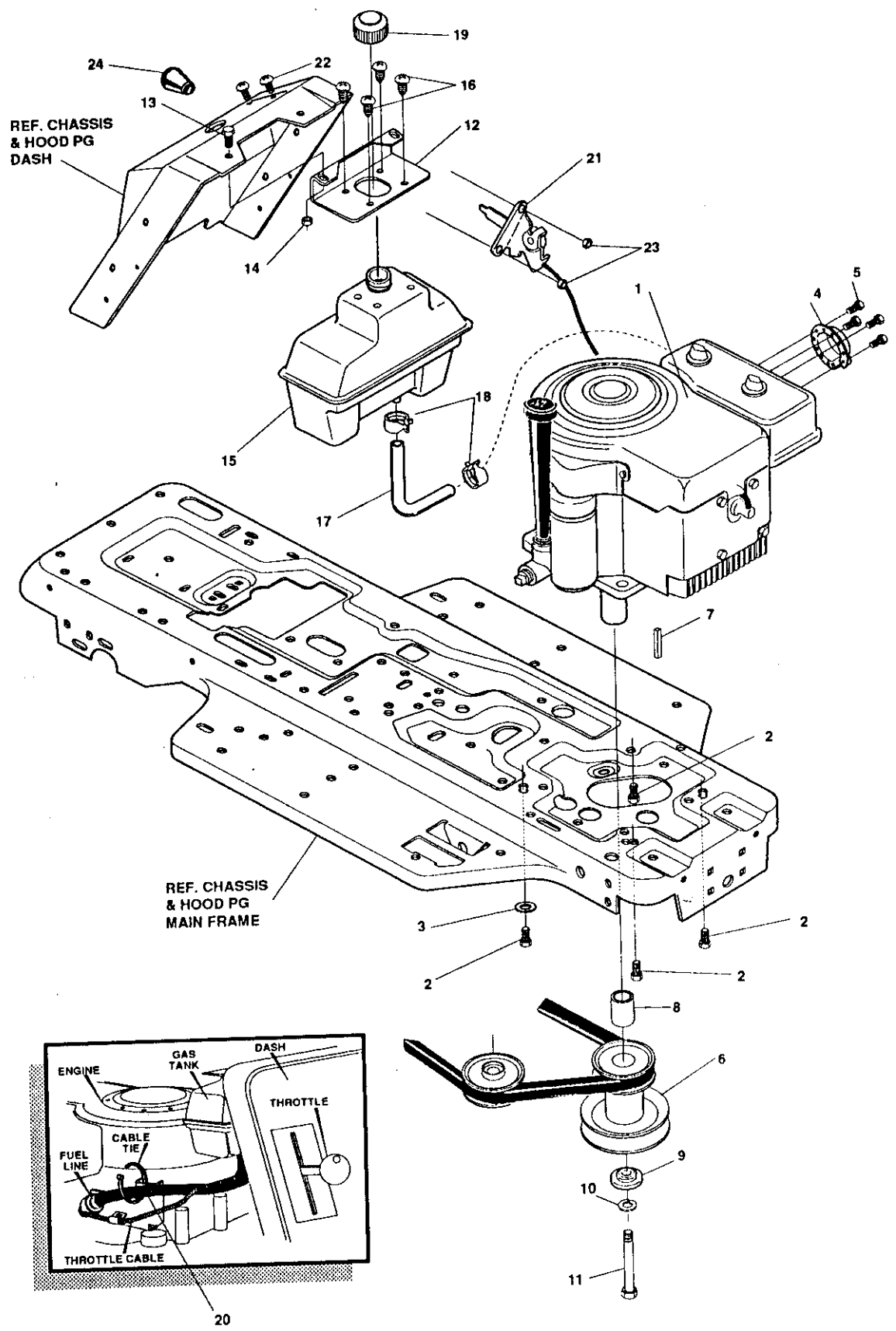
321948B

# 30" LAWN TRACTOR MODEL C3554-080

Key#	Part#	Description	Qty
50.	49896	MF BELT GUIDE	1
51.	271184	NUT, 5/16-18 HEXKEPS	1
52.	120393	WASHER, FLAT .344X .69X.065	2
53.	1498	NUT, 5/16-18 REGHEXCTRLK	1
54.	302603	SF ASSY,BRAKE PEDAL S.F.	1
55.	319676	PIN,CLEVIS .5 DIA,4.87LG,ZN PL	1
56.	302601	SPACER, SLEV .53 X .62X1.406	1
57.	56180	PIN, HAIR .091 DIAX1.62LG	1
58.	48761	PAD,CLUTCH/BRAKE PEDAL	1
59.	1306	MF IDLER ARM BRKT TRACTION SF	1
60.	41890	BOLT, .625X .218 HSH 5/16-18	1
61.	4107	WASHER, FLAT .635X1.31X.07 PL	1
62.	45602	WASHER, FLAT .333X .87X.119	1
63.	1498	NUT, 5/16-18 REGHEXCTRLK	1
64.	49276	SPRING,3/4 ODX6.75X.091 TENSIO	1
65.	39659	MF RETAINER,BELT	1
66.	35374	PULLEY, IDLER V4L 3.06X .62	1
67.	45892	BOLT, 3/8-16X1.50 CARR GR2	1
68.	1499	NUT, 3/8-16 REGHXCTRLK	1
69.	43980	ROD, .268 DIA CLUTCH	1
70.	50562	SPRING,3/8ODX1.625X.055 TENSIO	1
71.	322613	BRACKET, TRACTION BRAKE S/F	1
72.	46824	BOLT, .500X .188 HSH 5/16-18Z	1
73.	1498	NUT, 5/16-18 REGHEXCTRLK	1
74.	322614	ROD, BRAKE 915 T/A SF RAW 999	1
75.	53820	SPRING, CLUTCH .625 OD	1
76.	50352	NUT, 1/4-20 WDFLLK TOPLOCK	1
77.	*	TIRE & RIM, PU 18X6.5X8TURFWHI	2
78.	24167	VALVE STEM	1
79.	36182	HUB, WHEEL WHITE	1
80.	*	TIRE, PU 18X6.5X8 TURF	1
81.	52928	KEY, SQUARE .187SQX2.25LG	2
82.	642	WASHER, FLAT .755X1.31X.075	4
83.	42815	WASHER, FLAT .755X1.53X.07	2
84.	36625	RING, RETEX .57X.05TRU5133-75	2
85.	40394	HUB CAP, 1.500ID X 7/8LG	2

# 30" LAWN TRACTOR MODEL C3554-080

## ENGINE & CONTROL



**NOTE: ALWAYS USE ORIGINAL EQUIPMENT PARTS.**  
Use of service/replacement parts other than original equipment parts may void your warranty.

**ALL UNNUMBERED  
ITEMS ARE INTERCHANGABLE  
WITH OPPOSITE SIDE**

321970A

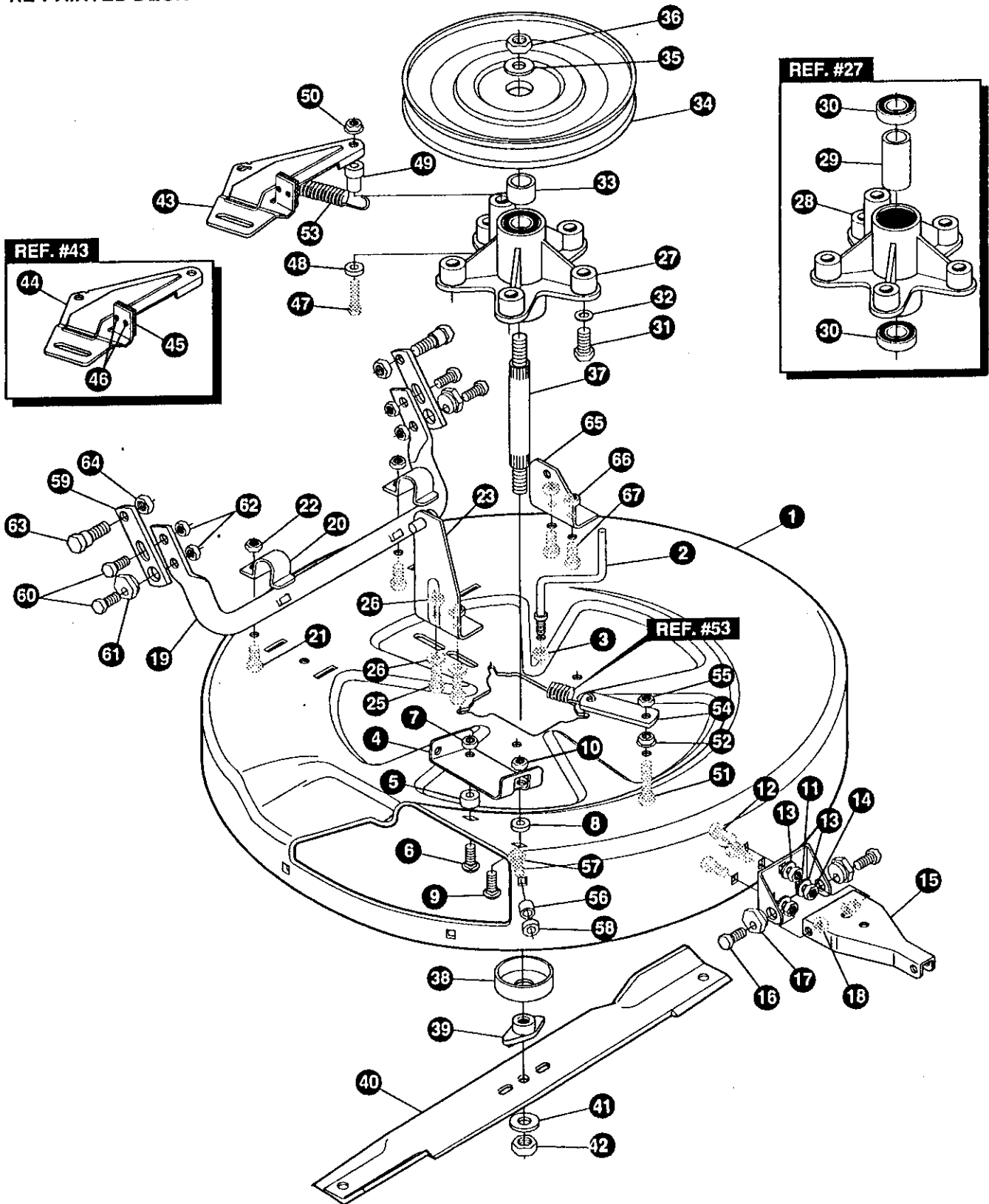
# 30" LAWN TRACTOR MODEL C3554-080

Key#	Part#	Description	Qty.
1	ENGINE	8 HP B&S VER ELEC (SEE ENGINE MANUAL)	1
2	• 50947	SCREW, 3/8-16X1.25 WAHHTAP	4
3	138489	WASHER, EXLK .384X.69X.04	1
4	301476	DEFLECTOR SIDE OUT	1
5	• 35287	SCREW, #8-32X .38 HHWATAP	4
6	300577	PULLEY,ENGINE	1
7	26655	KEY, SQUARE .249SQX 2.50	1
8	304246	SPACER	1
9	56431	WASHER,.980IDX1.38ODX.437PILOT	1
10	120383	WASHER, REGSPTLK.459X.78X.12	1
11	• 182764	SCREW, 7/16-20X3.25 HHC	1
12	302814-853	BRACKET,GAS TANK	1
13	• 55686	SCREW, 1/4-20X .63 SLTRMA	2
14	• 51335	NUT, 1/4-20 WDFLLK	2
15	314989	TANK, FUEL 1 GAL	1
16	• 49050	SCREW, 1/4-10X .75PHPNTAP	4
17	47452	GAS LINE .25ID BULK LENGTH	14.5IN
18	48672	CLAMP, FUEL LINE	2
19	46704	GAS CAP 1-1/2-7	1
20	57444	TIE, CABLE BLACK NYLON	1
21	320031	THROTTLE, CONTROL	1
22	• 159943	SCREW, 10-24X .63PHPNMA	2
23	271166	NUT, #10-24 HEXKEPS	2
24	50607	KNOB,THROTTLE CONTROL	1

• STANDARD HARDWARE ITEMS.

# 30" LAWN TRACTOR DECK MODEL C3554-080

## PRE-PAINTED DECK



**NOTE:** ALWAYS USE ORIGINAL EQUIPMENT PARTS. Use of service/replacement parts other than original equipment parts may void your warranty.

ALL UNNUMBERED ITEMS ARE INTERCHANGABLE WITH OPPOSITE SIDE

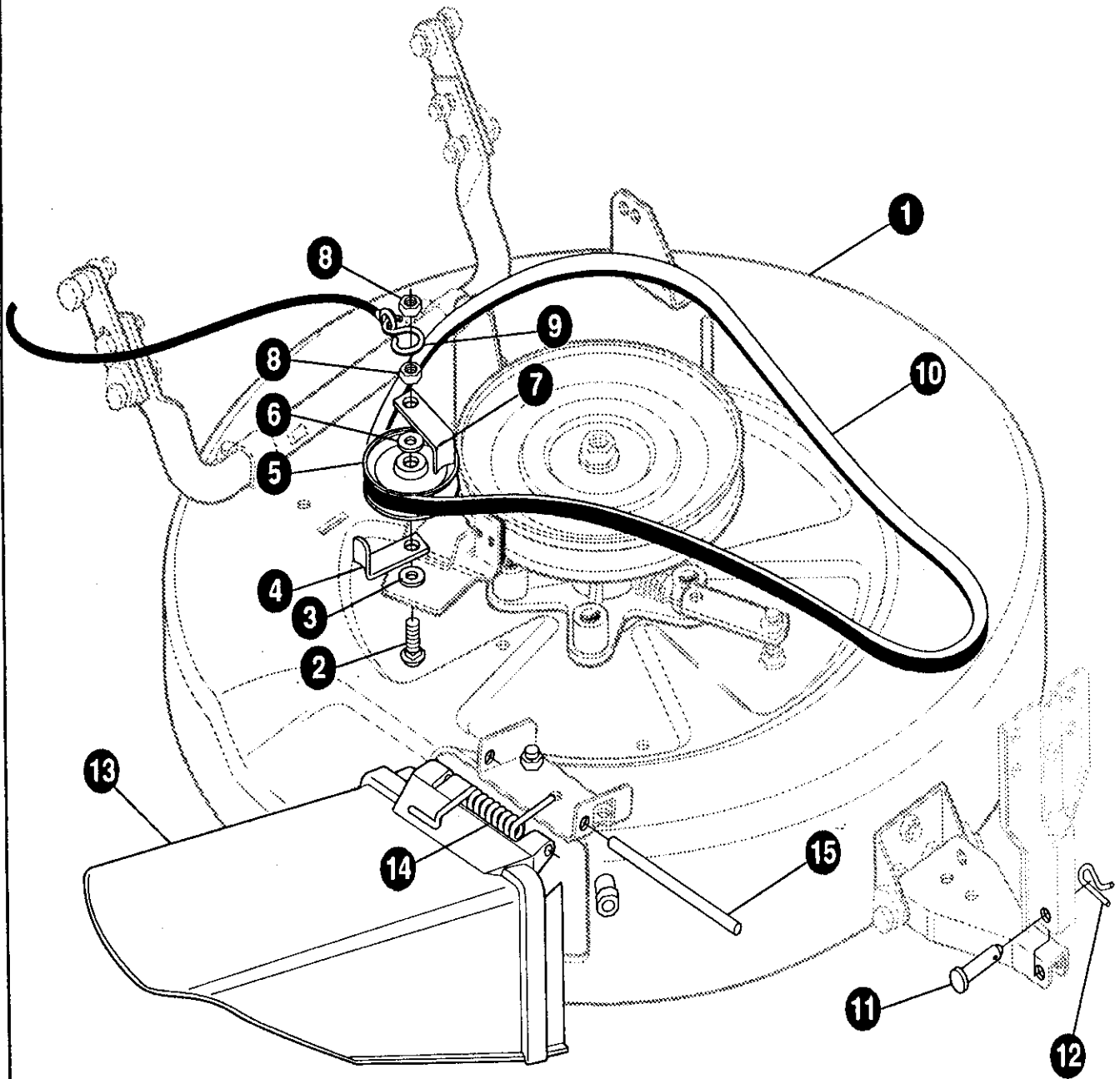
323276A



# 30" LAWN TRACTOR MODEL C3554-080

Key#	Part#	Description	Qty.
1	321982-853	DECK,MOWER 30 INCH S.F.	1
2	57318	GUIDE,BELT 5/16-18 THD.	1
3	1498	NUT,5/16-18 REGHEXCTRLK	1
4	302364	BRACKET CHUTE MOUNT	1
5	314702	SPACER,SLEEVE .344X1.0X5.00	1
6	120230	BOLT, 5/16-18X1.25 CARR GR2	1
7	1498	NUT,5/16-18 REGHEXCTRLK	1
8	45602	WASHER,FLAT .333X.87X.119	1
9	126216	BOLT,5/16-18X.75CARR GR2	1
10	1498	NUT,5/16-18 REGHEXCTRLK	1
11	311237	MS BRACKET MOUNTING,FRONT	1
12	57072	BOLT, 5/16-18 REGHEXCTRLK	3
13	120393	WASHER,FLAT .344X.69X.065	3
14	1498	NUT,5/16-18 REGHEXCTRLK	3
15	311236	BRACKET,BAR,TOW,FRONT	1
16	122017	SCREW,5/16-18X1.00 HHC GR2	2
17	58247	ADJUSTING NUT	2
18	1498	NUT,5/16-18 REGHEXCTRLK	2
19	313372	WS,ASSY,TUBE,PIVOT	1
20	51985	SUPPORT PIVOT TUBE	1
21	180077	SCREW,5.16-18X.75 HHC	2
22	1498	NUT,5/16-18 REGHEXCTRLK	2
23	314119	ASSY LIFT BRKT.	1
24	180077	SCREW,5.16-18X.75 HHC	2
25	120393	WASHER,FLAT .344X.69X.065	2
26	1498	NUT,5/16-18 REGHEXCTRLK	2
27	313588	ASSEMBLY QUILL	1
28	314272	QUILL	1
29	314274	TUBE,SPACER	1
30	313576	BRNG,BALL	2
31	50634	SCREW, 5/16-18X.88 WAHTAP	5
32	138485	WASHER, EXLK .320X.61X.03	5
33	321146	SPACER SLEEVE .790X1.250X.500	1
34	314273	PULLEY ASSEMBLY	1
35	22265	WASHER,FLAT .515X1.38X.119	1
36	1500	NUT,1/2-13 REGHCTRLK	1
37	321144	SHAFT,QUILL 30"MOWER S.F.	1
38	313577	SHIELD,DUST,BEARING	1
39	313584	HUB,BLADE ADAPTOR	1
40	314826	BLADE 30" TD MOWER	1
41	22265	WASHER,FLAT .515X1.38X.119	1
42	1500	NUT,1/2-13 REGHCTRLK	1
43	12229	BRACKET IDLER ASSEMBLY	1
44	313510	BRACKET ARM IDLER	1
45	306973	BRAKE-PAD HARD	1
46	41601	RIVET, OVSET .187DIAX.50LG	2
47	180113	SCREW,5/16-18X3.00 HHC GR5	1
48	45602	WASHER,FLAT .333X.87X.119	1
49	321145	SPACER,SLEEVE .322X.63X2.310	1
50	44108	NUT, 5/16-18 HWDFLCTRLK	1
51	122033	SCREW,5/16-18X1.38 HHC	1
52	44108	NUT,5/16-18 HWDFLCTRLK	1
53	35410	SPRING .071X.62X4.37	1
54	302357	LINK	1
55	1498	NUT,5/16-18 REGHEXCTRLK	1
56	50520	SPACER	1
57	126216	BOLT,5/16-18X.75 CARR.	1
58	1498	NUT,5/16-18 REGHEXCTRLK	1
59	314099	BRACKET,BAR,REAR STABILIZER	2
60	122017	SCREW, 5/16-18X1.00 HHC	4
61	58247	ADJUSTING NUT	2
62	1498	NUT,5/16-18 REGHEXCTRLK	4
63	51940	BOLT, .500X.437 HHSX 3/8-16	2
64	1499	NUT,3/8-16 REGHXCTRLK	2
65	320605	BRACKET,BAR LIFT	1
66	1498	NUT,5/16-18 REGHEXCTRLK	2
67	180077	SCREW,5/16-18X.75 HHC GR5	2

FINAL DECK ASSEMBLY



**NOTE: ALWAYS USE ORIGINAL EQUIPMENT PARTS.**  
Use of service/replacement parts other than original equipment parts may void your warranty.

**ALL UNNUMBERED  
ITEMS ARE INTERCHANGABLE  
WITH OPPOSITE SIDE**

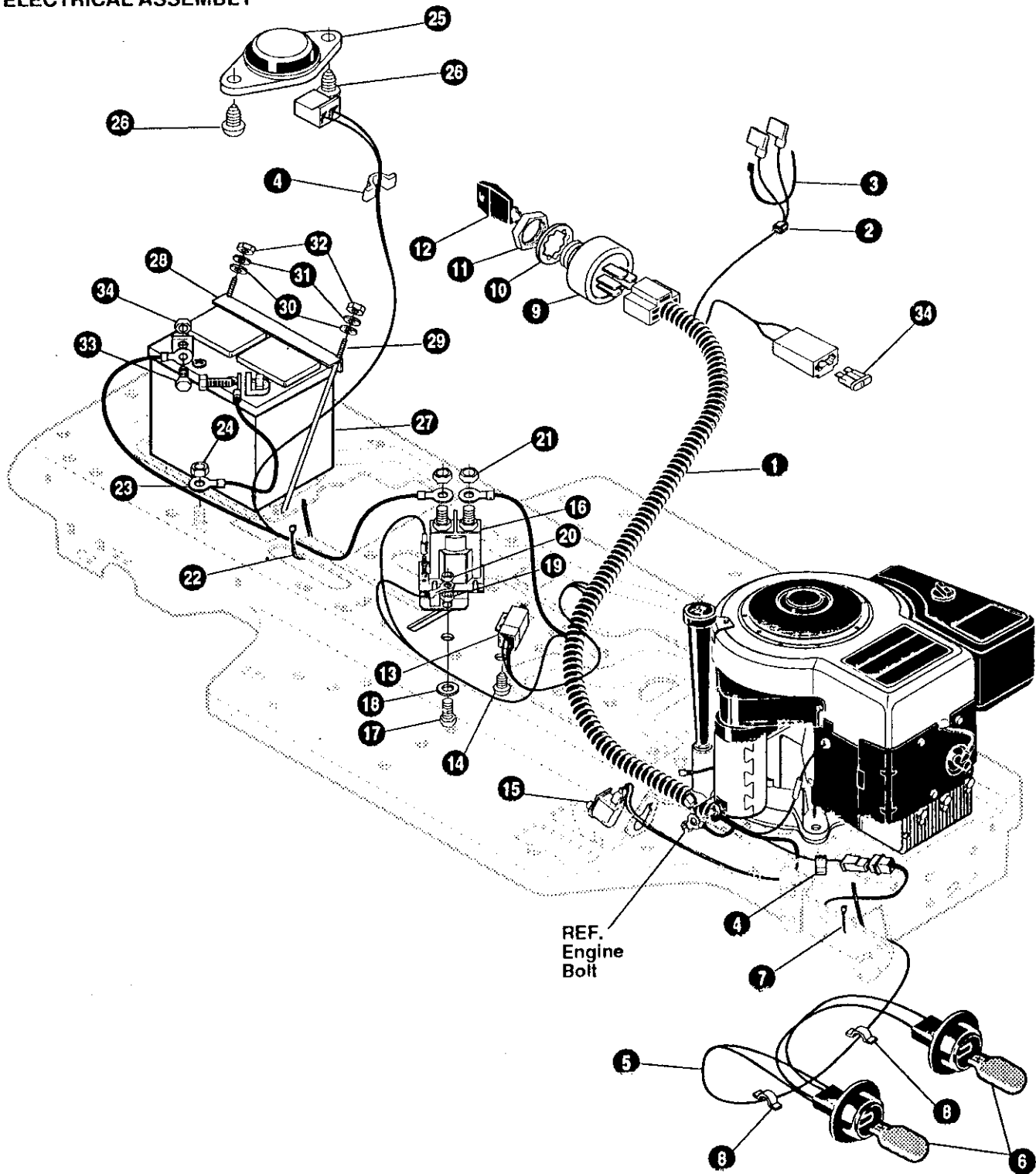
323278A

# 30" LAWN TRACTOR MODEL C3554-080

Key#	Part#	Description	Qty.
1.	*	DECK, 30SD ASSY PTD BLK 853	1
2.	301340	BOLT, 3/8-16X2.50 CARR	1
3.	22265	WASHER, FLAT .515 X 1.38 X .119 PL	1
4.	39659	RETAINER,BELT	1
5.	45074	PULLEY, IDLER V4L 3.06X .72	1
6.	25210	WASHER, FLAT .392X1.25X.09	1
7.	39659	RETAINER,BELT	1
8.	1499	NUT, 3/8-16 REGHXCTRLK	2
9.	310734	HOOK, S, 10 GA. STEEL	1
10.	321147	BELT, V 4L 54.0 - MOD SEC	1
11.	47816	PIN, .495X1.750 CLEVIS-SHORT	1
12.	56180	PIN, HAIR .091 DIA X1.62LG	1
13.	315314	CHUTE,DEFLECTOR	1
14.	314975	SPRING TORSION CHUTE DEF.	1
15.	304424	ROD,PIVOT DECK .312DX7.25	1

\* ORDER INDIVIDUAL PARTS.

ELECTRICAL ASSEMBLY



**NOTE: ALWAYS USE ORIGINAL EQUIPMENT PARTS.**  
 Use of service/replacement parts other than original equipment parts may void your warranty.

**ALL UNNUMBERED  
 ITEMS ARE INTERCHANGABLE  
 WITH OPPOSITE SIDE**

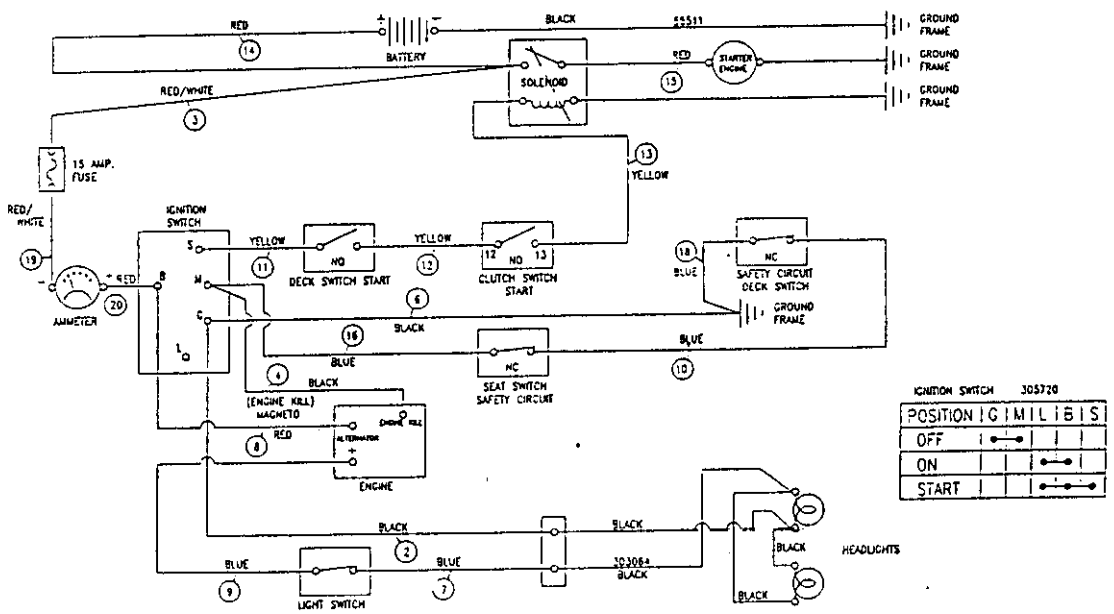
321207B

# 30" LAWN TRACTOR MODEL C3554-080

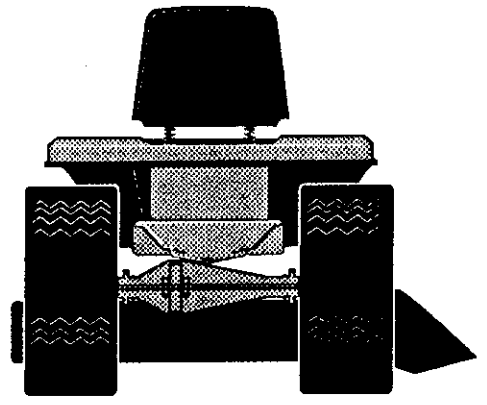
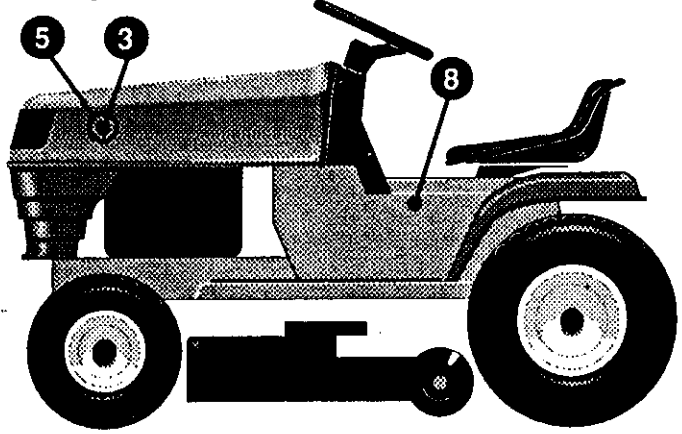
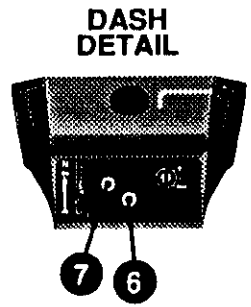
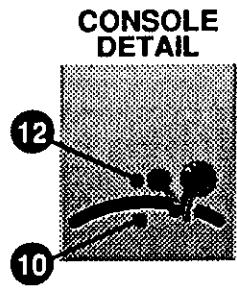
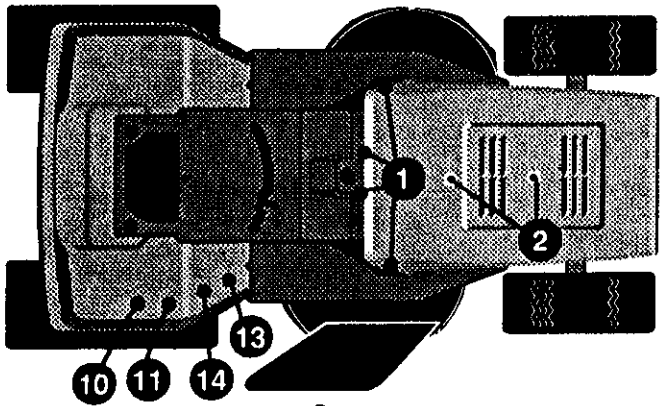
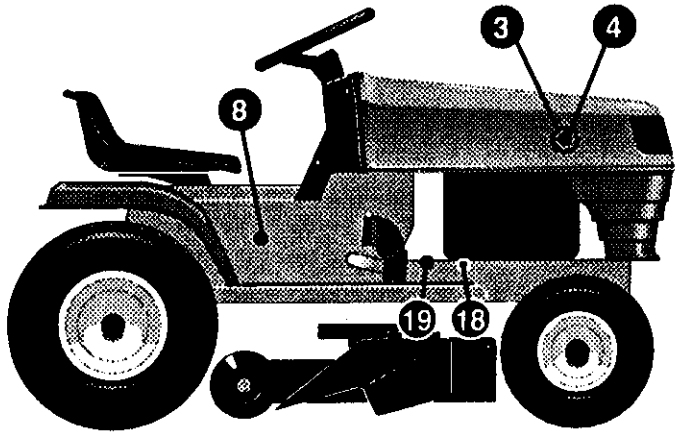
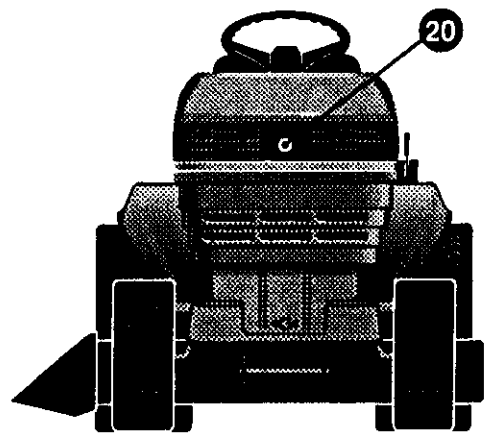
Key#	Part#	Description	Qty.
1.	322087	WIRE HARNESS SF 8-12B&S W/AMM	1
2.	322298	SPLICER	1
3.	57444	CABLE TIE	1
4.	41482	PRESS CLIP,1.380LG .255ID	2
5.	303064	ASSY,LIGHT WIRE-1/4 TURN	1
6.	52572	BULB, HEADLAMP	2
7.	57444	TIE, CABLE BLACK NYLON 5.62	1
8.	41482	PRESS CLIP,1.380LG .255ID	2
9.	300687	SWITCH, IGNITION & LIGHTS	1
10.	138557	WASHER, REGINTLK.640X1.1X.05	1
11.	• 48140	NUT, 5/8-32 HXHD IGN SWIT	1
12.	49643	2 KEYS & RING, ASSY BLANK	1
13.	57476	SWITCH,SCR MNT DP NC NO	BLK1
14.	• 57220	SCREW, #12 X .50 PHPNHTAP BLK	2
15.	300220	SWITCH,SNAPMNT NO .055/.116BLK	1
16.	53716	SOLENOID	1
17.	• 187745	SCREW, 1/4-20X .75 HXSEMMA	2
18.	1084	WASHER, FLAT .281X1.00X.063PL	1
19.	• 1502	NUT, 1/4-20 REGHEXCTRLK	2
20.	• 271172	NUT, 1/4-20 REGHEXKEPS	1
21.	• 271187	NUT, 5/16-24 HKEPS	2
22.	57444	TIE, CABLE BLACK NYLON 5.62L	1
23.	55511	WIRE, GROUND, 12.5"	1
24.	• 271184	NUT, 5/16-18 HEXKEPS	1
25.	57547	SWITCH, SEAT	1
26.	• 160505	SCREW, 1/4-20X .38PHPNHMAGR2	2
27.	57486	BATTERY, YUASA 12V 5-PLATE	1
28.	56360	BATTERY BRACKET	1
29.	40234	BATTERY ROD	2
30.	120392	WASHER, FLAT .281X .63X.065	2
31.	120380	WASHER, REGSPTLK.263X.49X.07	2
32.	• 120375	NUT, 1/4-20 REGHEX	2
33.	• 120854	SCREW, 1/4-20X .63 HHC	2
34.	• 271172	NUT, 1/4-20 REGHEXKEPS	2
35.	• 302031	FUSE, 15 AMP SPAPE TYPE	1

• INDICATES STANDARD HARDWARE ITEMS  
 ••Spade type fuse included with the wire harness.

## SCHEMATIC DRAWING:



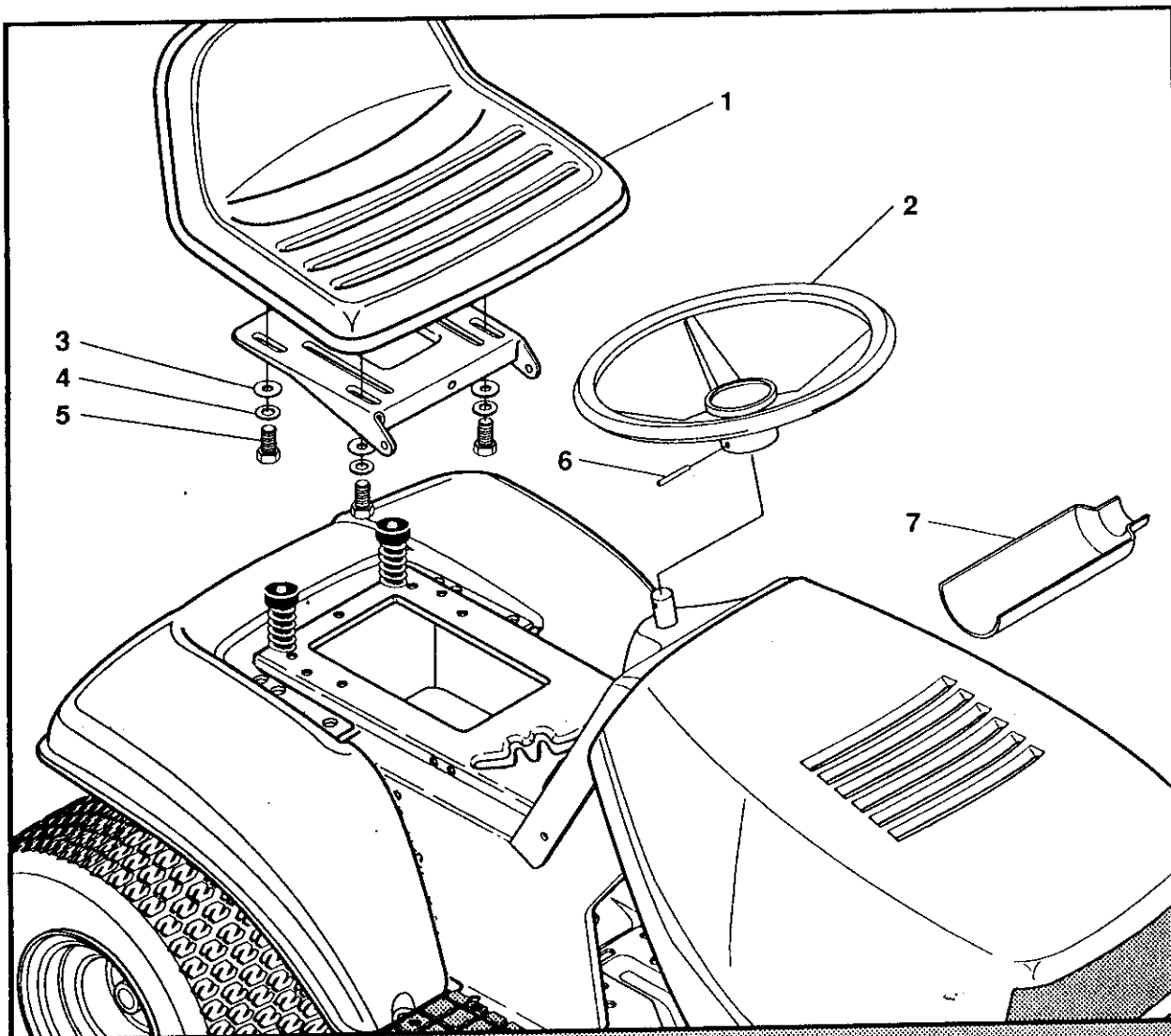
DECALS



**30" LAWN TRACTOR MODEL C3554-080**

KEY#	PART#	DESCRIPTION	QTY
1.	318197	PAD,ADHESIVE 1.00X1.50X.12	4
2.	305602	FOAM HOOD 4X15	2
3.	305603	PAD, 18 X 6 FOAM HOOD	2
4.	323552	DECAL, 830 SOLIFER RH	1
5.	323553	DECAL, 830 SOLIFER LH	1
6.	320721	DECAL, DASH PLAIN EXPORT	1
7.	317347	DECAL, PTO ENGAGEMENT, ISO EXP	1
8.	323627	NAME PLATE, 8/30 WHITE	2
9.		REFERENCE ONLY	1
10.	311394	DECAL SHIFT REV/NEUTRAL	1
11.	323464	DECAL SHIFTER POSITION	1
12.	307383	DECAL,INSTR. CONSOLE TOP ENGL	1
13.	305770	DECAL,CAUTION TRIANGLE EUROPE	1
14.	310553	DECAL,DANGER ENGLISH	1
15.		REFERENCE ONLY	1
16.	301897	DECAL, LIFT DECK BLADE HEIGHT	1
17.	68901	DECAL,BLADE HEIGHT ADJ. EUROPE	1
18.	67667	DECAL, CHECK OIL LEVEL	1
19.	68903	DECAL,BRAKE/CLUTCH ISO	1
20.	307732	DECAL,LENS CENTER SMOKED	1

## CUSTOMER ASSEMBLY



## CUSTOMER ASSEMBLY VIEW

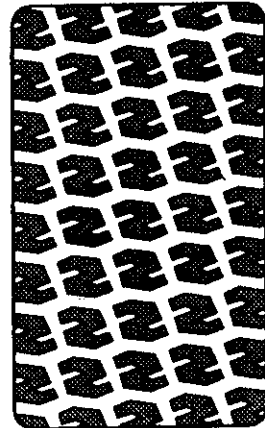
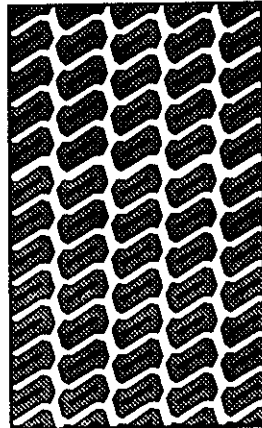
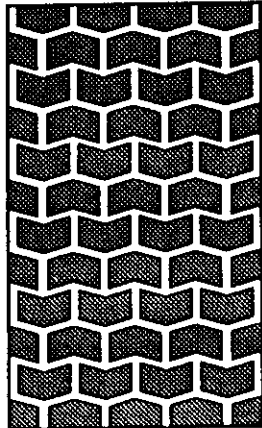
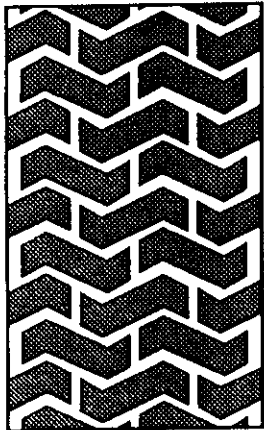
315108 PARTS BAG ASSY QTY1

Key#	Part#	Description	Qty
1	57452	SEAT MV350	1
2	301251	STEERING WHEEL	1
3	120393	WASHER, FLAT .344X.69X.065	4
4	120638	WASHER, HVSPLTLK .328X.60X.109	4
5	122007	SCREW, 5/16-18X.75 HHC	4
6	456378	ROLL PIN .250DIA X 2.0LG	1
7	54873	OIL TROUGH	1

315125A



# TREAD PATTERNS



"A"

"B"

"C"

"D"

TIRE SIZE	"A"	"B"	"C"	"D"
11 X 4.00 - 5	42295	319679		
13 X 5.00 - 6	41060	319680		
15 X 6.00 - 6	39830	316702	301140	313952
16 X 6.50 - 8	41081	319682		314539
18 X 8.50 - 8	319683	317400		
18 X 9.50 - 8	41106	316701		313950
20 X 8.00 - 8	319685	319684	57164	314584
20 X 10.00 - 8	58276	319686		313654
20 X 10.00 - 10	55893	319687		
23 X 9.50 - 12	53655	319690	319689	314370