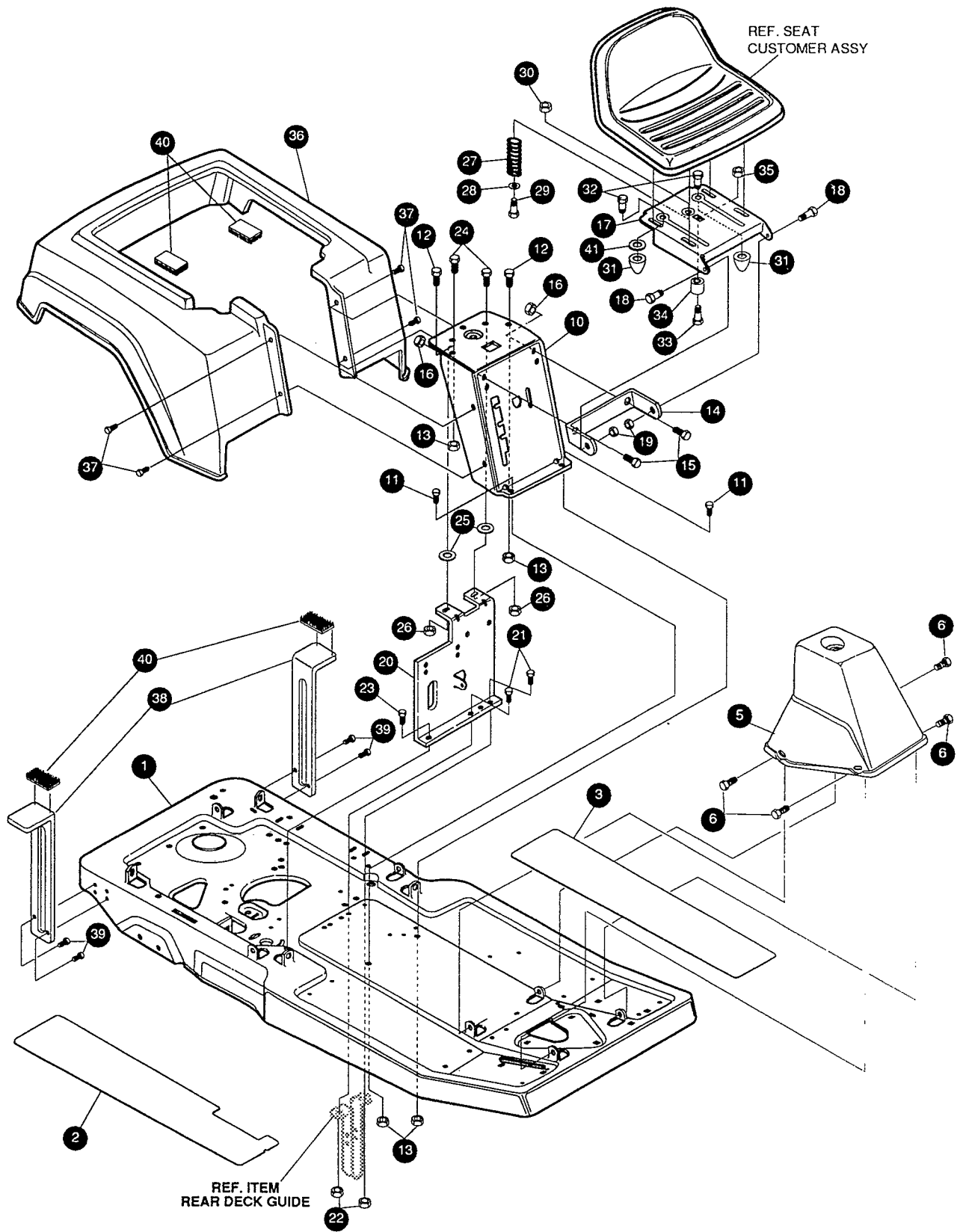




F3595-140
8HP/30"



NOTE: ALWAYS USE ORIGINAL EQUIPMENT PARTS.
Use of service/replacement parts other than original equipment parts may void your warranty.

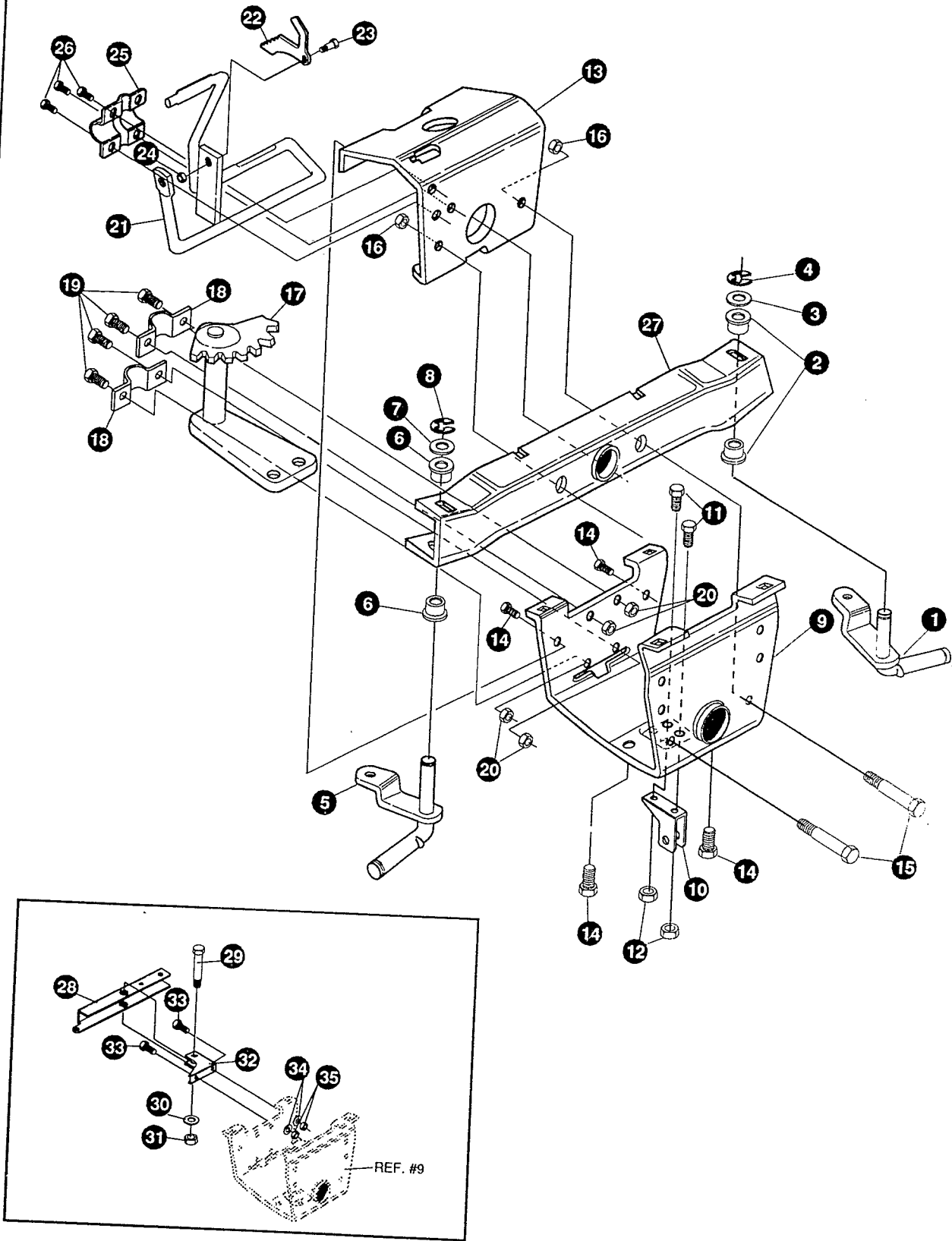
**ALL UNNUMBERED
ITEMS ARE INTERCHANGEABLE
WITH OPPOSITE SIDE**

333114 B

KEY#	PART#	DESCRIPTION	QTY
1	314227-860	FRAME, RER.....	1
2	301181	FOOT PAD, RH, GRIT.....	1
3	12555	FOOT PAD, LH.....	1
5	304537	CONSOLE, W/O LITE, NOMA BLACK.....	1
6	995346	SCREW, 1/4-20 X .50 WAHHTAP.....	4
10	330969-860	SUPPORT, SEAT, W/LIFT SLOT.....	1
11	48901	SCREW, 5/16-18 X .63 WAHHC.....	2
12	180077	SCREW, 5/16-18 X .75 HHC.....	2
13	1498	NUT, 5/16-18 REGHEXCTRLK.....	4
14	301330-853	SEAT BRACKET.....	1
15	180120	SCREW, 3/8-16 X .75 HHC.....	2
16	1499	NUT, 3/8-16 REGHXCTRLK.....	2
17	316128-853	ASSEMBLY, PLATE, SEAT, TUV.....	1
18	20507	BOLT, .437 X .156 HSH, 5/16-18.....	2
19	1498	NUT, 5/16-18 REGHEXCTRLK.....	2
20	331106-853	SEAT/SHIFT SUPPORT, FOR M#28.....	1
21	180079	SCREW, 5/16-18 X 1.00 HHC.....	2
22	1498	NUT, 5/16-18 REGHEXCTRLK.....	2
23	35498	SCREW, 5/16-18 X .75 WAHHTAP.....	1
24	180077	SCREW, 5/16-18 X .75 HHC.....	2
25	45602	WASHER, FLAT .333 X .87 X .119.....	2
26	1498	NUT, 5/16-18 REGHEXCTRLK.....	2
27	330463	SPRING, SEAT 1.50 OD X 2.25 LONG.....	1
28	120392	WASHER, FLAT .281 X .63 X .065.....	1
29	180016	SCREW, 1/4-20 X .50 HHC.....	1
30	1502	NUT, 1/4-20 REGHEXCTRLK.....	1
31	310540	BUMPER SEAT EURO T.U.V. CERT.....	2
32	180073	SCREW, 5/16-18 X .50 HHC.....	2
33	156033	SCREW, 10-32 X 1.00, FHCR.....	1
34	313508	SPACER, SLEEVE .211 X .88 X .62.....	1
35	997319	NUT, #10-32 REGHEXCTRLK.....	1
36	313511	FENDER, RER.....	1
37	44811	SCREW, 1/4-20 X .75 WAHHTAP.....	4
38	305645	FENDER SUPPORT.....	2
39	995346	SCREW, 1/4-20 X .50 WAHHTAP.....	4
40	12599	FASTENER, VELCRO, 2" X 1".....	2
41	120386	WASHER, FLAT .312 X .73 X .065.....	2
	336774	PARTS MANUAL.....	1
	335486	OPERATOR'S MANUAL (ENGLISH).....	1
	336083	OPERATOR'S MANUAL (FRENCH).....	1
	336294	OPERATOR'S MANUAL (GERMAN).....	1
	336786	OPERATOR'S MANUAL (SPANISH).....	1

F3595-140

REPAIR PARTS



NOTE: ALWAYS USE ORIGINAL EQUIPMENT PARTS.
Use of service/replacement parts other than original equipment parts may void your warranty.

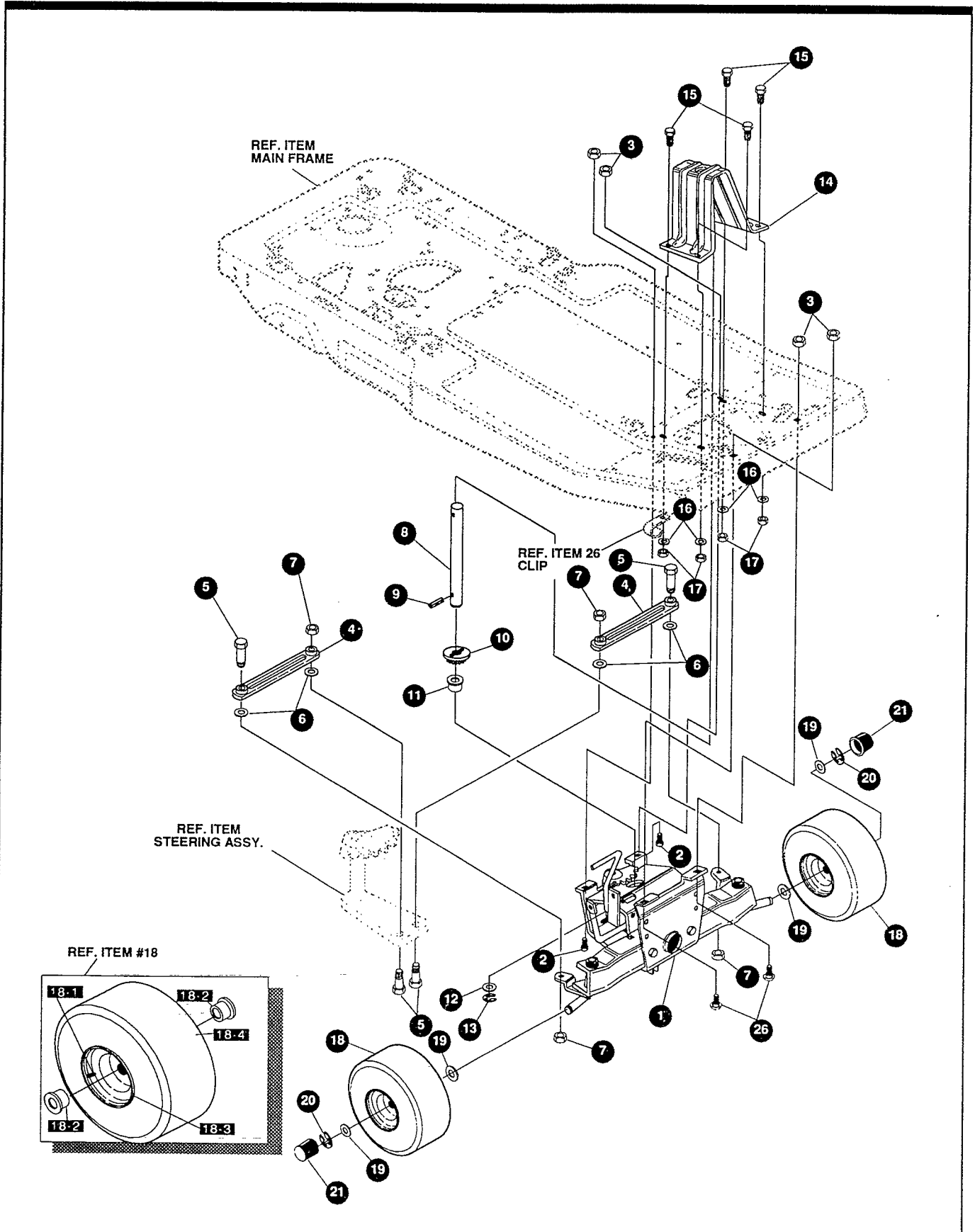
**ALL UNNUMBERED
ITEMS ARE INTERCHANGEABLE
WITH OPPOSITE SIDE**

316219 D

F3595-140

PRE-PAINTED FRONT AXLE ASSEMBLY

KEY#	PART#	DESCRIPTION	QTY
1	316216	ASSEMBLY, SPINDLE, LH, 30, 36, RER	1
2	12552	BUSHING, SPINDLE	2
3	4107	WASHER, FLAT .635 X 1.31 X .07	2
4	20859	RING, RET E .48 X .04 TRU 5133-62	1
5	316217	ASSEMBLY, SPINDLE, RH, 30, 36, RER	1
6	12552	BUSHING, SPINDLE	2
7	4107	WASHER, FLAT .635 X 1.31 X .07	2
8	20859	RING, RET E .48 X .04 TRU 5133-62	1
9	314228-860	BRACKET, AXLE, OUTER, FRONT	1
10	323904	HANGER, BLACK	1
11	180077	SCREW, 5/16-18 X .75 HHC	2
12	1498	NUT, 5/16-18 REGHEXCTRLK	2
13	302799	AXLE BRACKET, INNER	1
14	35497	SCREW, 5/16-18 X .50 WAHTAP	4
15	180138	SCREW, 3/8-16 X 3.00 HHC	2
16	1499	NUT, 3/8-16 REGHXCTRLK	2
17	302958	STEERING ASSEMBLY, RER	1
18	302760	CLAMP .625 DIA	2
19	180077	SCREW, 5/16-18 X .75 HHC	4
20	1498	NUT, 5/16-18 REGHEXCTRLK	4
21	303249-853	BRAKE ARM ASSEMBLY	1
22	302955-860	LATCH, PARKING BRAKE	1
23	3275	BOLT, .373 X .140 HHSH, 1/4-20	1
24	1502	NUT, 1/4-20 REGHEXCTRLK	1
25	44112	BRACKET, CLUTCH & BRAKE	1
26	35497	SCREW, 5/16-18 X .50 WAHTAP	4
27	323904	HANGER, BLACK	1
28	309051	ROCKER ARM, MOWER ENGAGEMENT	1
29	310364	BOLT, .500 X 1.18 HHSH, 3/8-16	1
30	845	WASHER, FLAT .390 X 1.25 X .119	1
31	1499	NUT, 3/8-16 REGHXCTRLK	1
33	180077	SCREW, 5/16-18 X .75 HHC	2
34	120393	WASHER, FLAT .344 X .69 X .065	2
35	1498	NUT, 5/16-18 REGHEXCTRLK	2



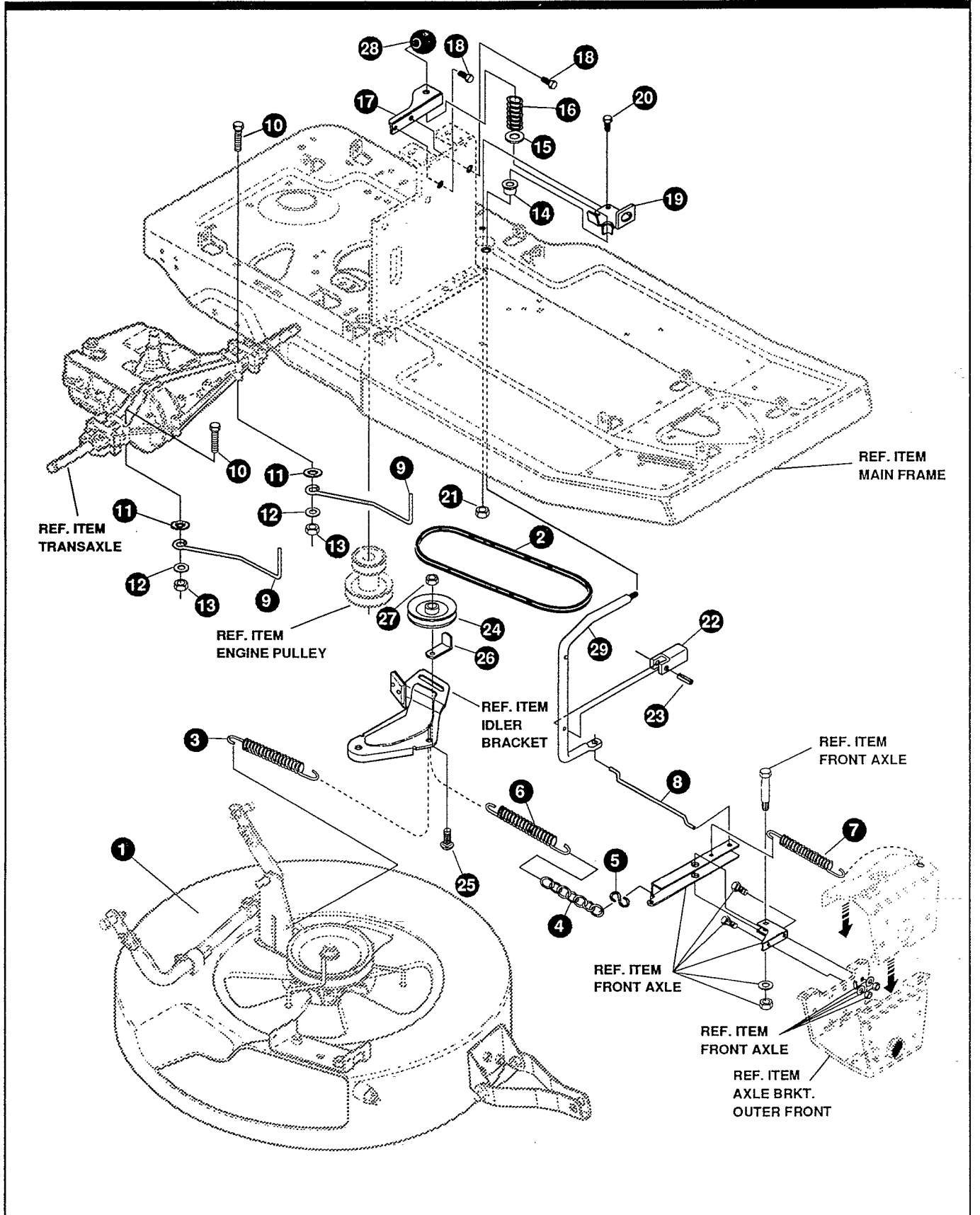
NOTE: ALWAYS USE ORIGINAL EQUIPMENT PARTS.
 Use of service/replacement parts other than original equipment parts may void your warranty.

ALL UNNUMBERED ITEMS ARE INTERCHANGEABLE WITH OPPOSITE SIDE

316220 F

KEY#	PART#	DESCRIPTION	QTY
1	*	ASSEMBLY, FRONT AXLE, PIVOTING	1
2	57072	BOLT, 5/16-18 X .63 CARRLN	2
3	45174	NUT, 5/16-18 HEXWDFLLK WHIZ	4
4	303140	TIE ROD, RER	2
5	180124	SCREW, 3/8-16 X 1.25 HHC	4
6	120382	WASHER, REGSPTLK .393 X .68 X .10	4
7	1499	NUT, 3/8-16 REGHXCTRLK	4
8	323906	SHAFT, STEERING, BLACK	1
9	454565	PIN, SPRING .250 DIA X 1.25 LONG	1
10	302766	GEAR, PINION	1
11	304010	BUSHING-STEERING	1
12	4107	WASHER, FLAT .635 X 1.31 X .07	1
13	20859	RING, RET E .48 X .04 TRU 5133-62	1
14	306553	SUPPORT, STEERING,BLK, 853	1
15	48901	SCREW, 5/16-18 X .63 WAHHC	4
16	120393	WASHER, FLAT .344 X .69 X .065	4
17	1498	NUT, 5/16-18 REGHEXCTRLK	4
18	305508	TIRE & RIM ASSEMBLY, PU 11 X 4.0 X 5	2
18-1	24167	VALVE STEM	
18-2	301137	BEARING, FLANGE	
18-3	301175	RIM, WHEEL	
18-4	319679	TIRE, 11 X 4 X 5	
19	40677	WASHER, FLAT .640 X 1.25 X .06	4
20	20859	RING, RET E .48 X .04 TRU 5133-62	2
21	36832	HUB CAP, PLASTIC, BLACK	2
26	180077	SCREW, 5/16-18 X .75 HHC	2

* ORDER INDIVIDUAL PARTS - ASSEMBLY NOT AVAILABLE



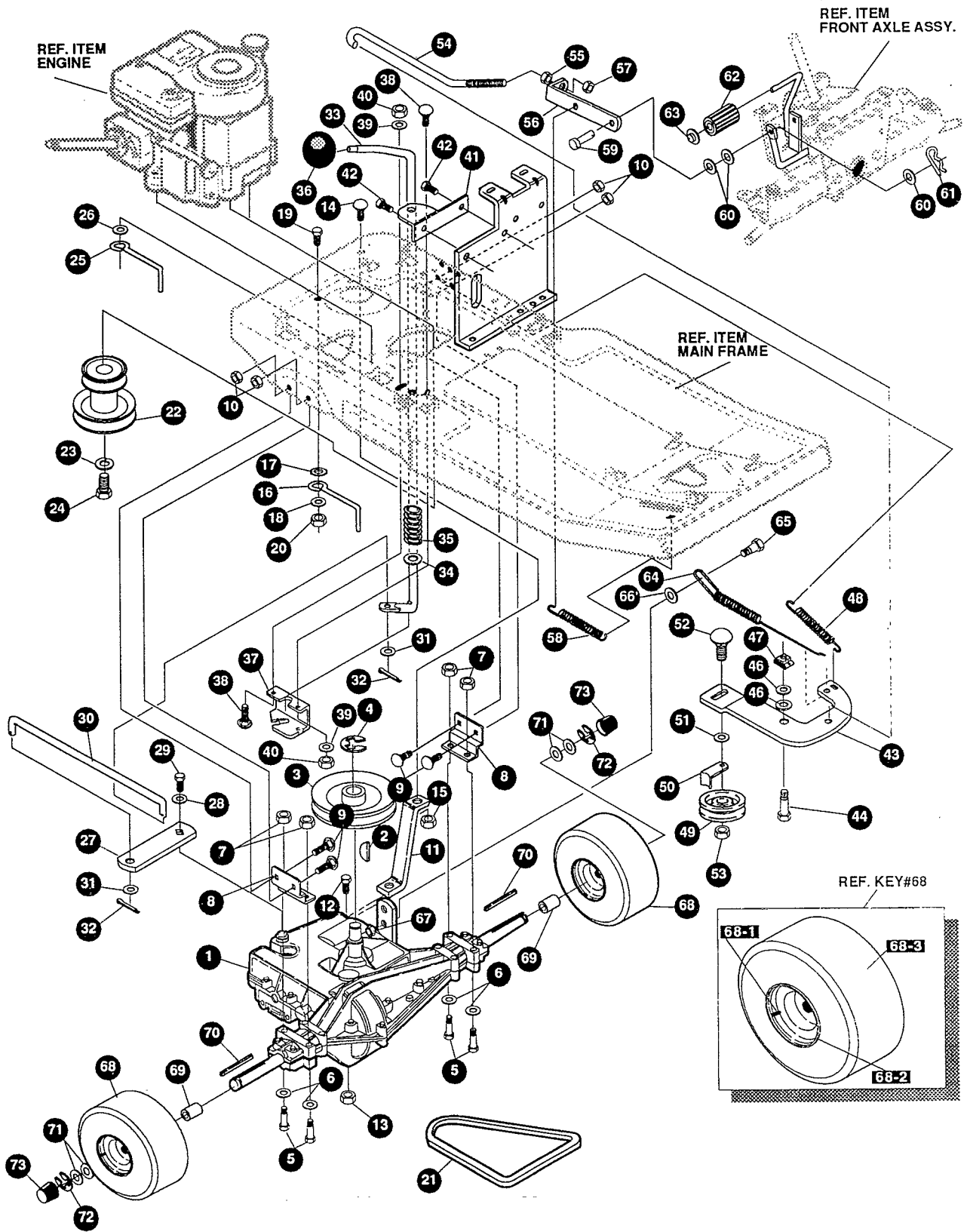
NOTE: ALWAYS USE ORIGINAL EQUIPMENT PARTS.
 Use of service/replacement parts other than original equipment parts may void your warranty.

ALL UNNUMBERED ITEMS ARE INTERCHANGEABLE WITH OPPOSITE SIDE

331442 A

KEY#	PART#	DESCRIPTION	QTY
1	*	ASSEMBLY, DECK, PRE-PAINT, 30"	1
2	56537	BELT, V 4L, 50.5 LONG	1
3	35410	SPRING, .071 X .62 X 4.37	1
4	334471	KIT CHAIN JACK 310428	5"
5	310734	HOOK, S, 10 GA. STEEL	1
6	300683	SPRING, .75 X 6.3 X .105 TENSION	1
7	35410	SPRING, .071 X .62 X 4.37	1
8	309049	ROD, CONNECTING	1
9	310388	GUIDE, BELT	2
10	180091	SCREW, 5/16-18 X 2.50 HHC	2
11	138485	WASHER, EXLK .320 X .61 X .03	2
12	120393	WASHER, FLAT .34 4X .69 X .065	2
13	1498	NUT, 5/16-18 REGHEXCTRLK	2
14	310351	BEARING, FLANGE	1
15	304291	SPRING, RETAINING	1
16	304398	SPRING COMPRESSION	1
17	311107-853	SUPPORT BRACKET, PTO	1
18	995346	SCREW, 1/4-20 X .50 WAHHTAP	2
19	310309	BRACKET, PTO LIMIT	1
20	35498	SCREW, 5/16-18 X .75 WAHHTAP	1
21	1498	NUT, 5/16-18 REGHEXCTRLK	1
22	305225	STOP, PTO ENGAGE	1
23	326386	PIN, SPRING.187 DIA X 1.13 LONG	1
24	45074	PULLEY, IDLER, V4L, 3.06 X .72	1
25	45892	BOLT, 3/8-16 X 1.50 CARRSN	1
26	39659	RETAINER, BELT	1
27	1499	NUT, 3/8-16 REGHXCTRLK	1
28	55514	KNOB, ROUND 1.50 DIA, BLACK	1
29	309048	HANDLE, MOWER ENGAGEMENT	1

* REFERENCE ONLY



NOTE: ALWAYS USE ORIGINAL EQUIPMENT PARTS.
 Use of service/replacement parts other than original equipment parts may void your warranty.

ALL UNNUMBERED ITEMS ARE INTERCHANGEABLE WITH OPPOSITE SIDE

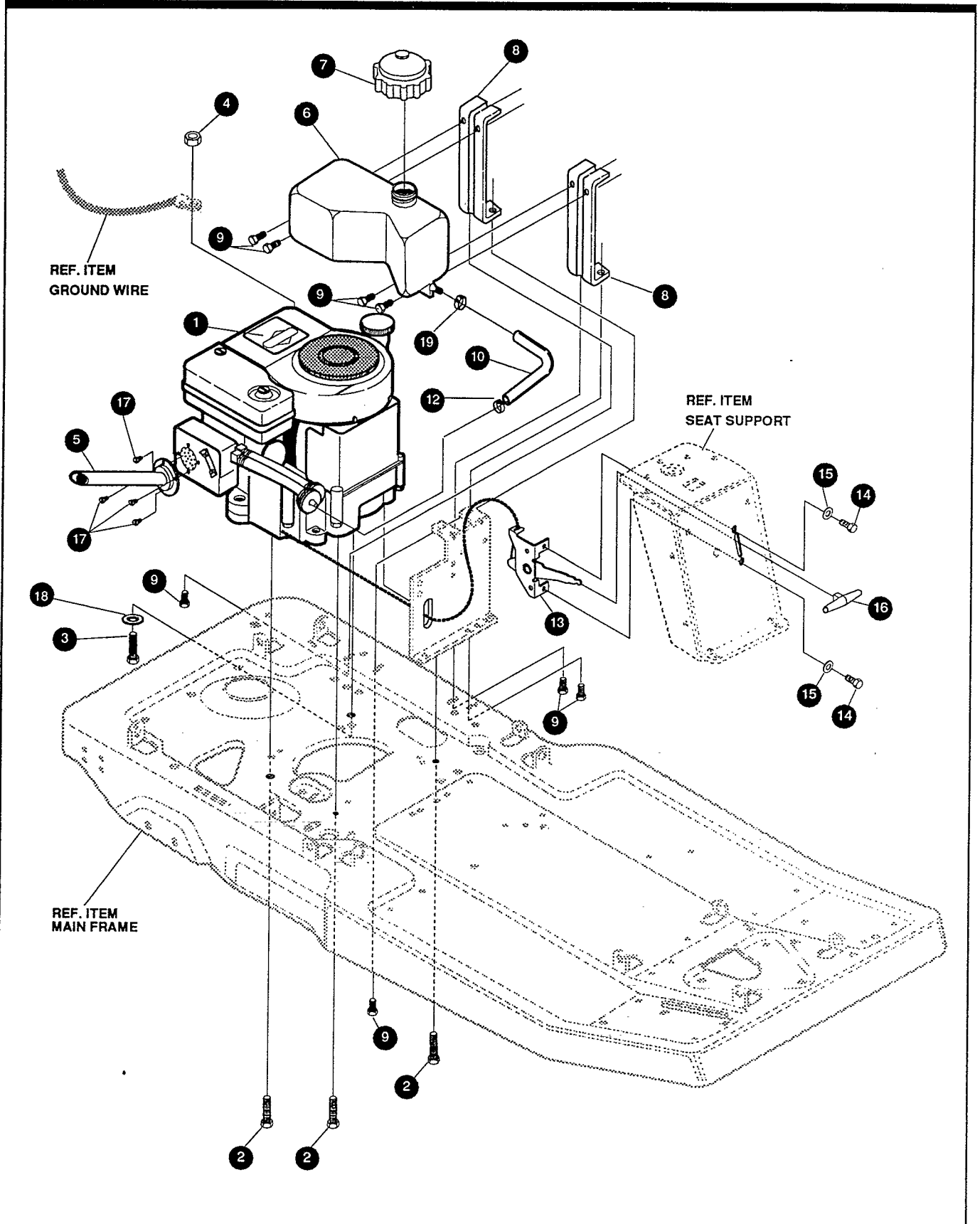
326424 F

F3595-140

TRACTION DRIVE ASSEMBLY

KEY#	PART#	DESCRIPTION	QTY
1	*	TRANSAXLE, P915-005 SPEED, RER	1
2	50795	KEY, HI-PRO 606 .75 DIA X .187 WD	1
3	303109	PULLEY, 6.6 OD V4L, T/A	1
4	22053	RING, RETEX .58 X .035 TRU 5100-62	1
5	180113	SCREW, 5/16-18 X 3.00 HHC	4
6	120393	WASHER, FLAT .344 X .69 X .065	4
7	1498	NUT, 5/16-18 REGHEXCTRLK	4
8	9796	BRACKET, TRANSAXLE	2
9	57072	BOLT, 5/16-18 X .63 CARRLN	4
10	1498	NUT, 5/16-18 REGHEXCTRLK	4
11	324199	BRACKET, TRANSAXLE SUPPORT	1
12	180087	SCREW, 5/16-18 X 2.00 HHC	1
13	1498	NUT, 5/16-18 REGHEXCTRLK	1
14	57072	BOLT, 5/16-18 X .63 CARRLN	1
15	1498	NUT, 5/16-18 REGHEXCTRLK	1
16	55488	BELT GUIDE	1
17	138489	WASHER, EXLK .384 X .69 X .04	1
18	120394	WASHER, FLAT .406 X .81 X .065	1
19	180079	SCREW, 5/16-18 X 1.00 HHC	1
20	1498	NUT, 5/16-18 REGHEXCTRLK	1
21	300575	BELT, V 4L, 34.00	1
22	328040	PULLEY, ENGINE, 3.315OF/5.5D/3.00D	1
23	120383	WASHER, REGSPTLK .459 X .78 X .12	1
24	182761	SCREW, 7/16-20 X 2.50 HHC	1
25	55488	BELT GUIDE	1
26	138489	WASHER, EXLK .384 X .69 X .04	1
27	323874	SHIFT LEVER BRACKET, BLACK	1
28	57157	WASHER, .750 X .250 SP-TRANSAXLE	1
29	56255	SCREW, 1/4-28 X .75 NYLHHC	1
30	321482	ROD, CONNECTING, SHIFT	1
31	120394	WASHER, FLAT .406 X .81 X .065	2
32	137185	PIN, COTTER .125 DIA X 1.00 LONG	2
33	309255	HANDLE, SHIFT	1
34	120396	WASHER, FLAT .531 X 1.06 X .095	1
35	301133	SPRING, SHIFT LEVER	1
36	55514	KNOB, ROUND 1.50 DIA, BLACK	1
37	309053	BRACKET, DETENT SHIFT	1
38	126216	BOLT, 5/16-18 X .75 CARRLN	2
39	120393	WASHER, FLAT .344 X .69 X .065	2
40	1498	NUT, 5/16-18 REGHEXCTRLK	2
41	303098-853	BRACKET, SHIFT CONTROL	1
42	995346	SCREW, 1/4-20 X .50 WAHHTAP	2
43	12593	PIVOT ARM, IDLER	1
44	329989	BOLT, .625 X .135 HSH, 5/16-18	1
46	45602	WASHER, FLAT .333 X .87 X .119	2
47	301124	TINNERMAN CLIP	1
48	35410	SPRING, .071 X .62 X 4.37	1
49	35374	PULLEY, IDLER V4L 3.06 X .62	1
50	39659	RETAINER, BELT	1
51	274517	WASHER, FLAT .406 X .73 X .063	1
52	45892	BOLT, 3/8-16 X 1.50 CARRSN	1
53	1498	NUT, 3/8-16 REGHXCTRLK	1
54	323532	ROD, CLUTCH, RER, BLACK	1
55	271184	NUT, 5/16-18 HEXKEPS	1
56	321378	BRACKET, CLUTCH BRAKE	1
57	1498	NUT, 5/16-18 REGHEXCTRLK	1
58	313854	SPRING, IDLER TRACTION DRIVE	1
59	39522	PIN, CLEVIS .312 X .812	1
60	120393	WASHER, FLAT .344 X .69 X .065	3
61	8260	PIN, HAIR .091 DIA X 1.66 LONG	1
62	52840	FOOT PEDAL	1
63	44582	CAP, PUSH-ON FITS 7/16 ROD	1
64	326856	SPRING, BRAKE P915 11.37"	1
65	326131	BOLT, .495 X .31 HSH, 5/16-18	1
66	308188	WASHER, FLAT .515 X 1.31 X .09	1
67	1498	NUT, 5/16-18 REGHEXCTRLK	1
68	41082	TIRE & RIM ASSEMBLY, PU 16 X 6.5 X 8	2
68-1	24167	VALVE STEM	
68-2	36182	RIM, WHEEL	
68-3	319682	TIRE, 16 X 6.5 X 8	
69	300588	SPACER, AXLE	2
70	52928	KEY, SQUARE .187 SQUARE X 2.25 LONG	2
71	42815	WASHER, FLAT .755 X 1.53 X .07	4
72	36625	RING, RETEX .57 X .05 TRU 5133-75	2
73	40394	HUB CAP, 1.500 ID X 7/8 LONG	2

* CONTACT YOUR NEAREST TRANSAXLE DEALER FOR PARTS & SERVICE



NOTE: ALWAYS USE ORIGINAL EQUIPMENT PARTS.
Use of service/replacement parts other than original equipment parts may void your warranty.

**ALL UNNUMBERED
ITEMS ARE INTERCHANGEABLE
WITH OPPOSITE SIDE**

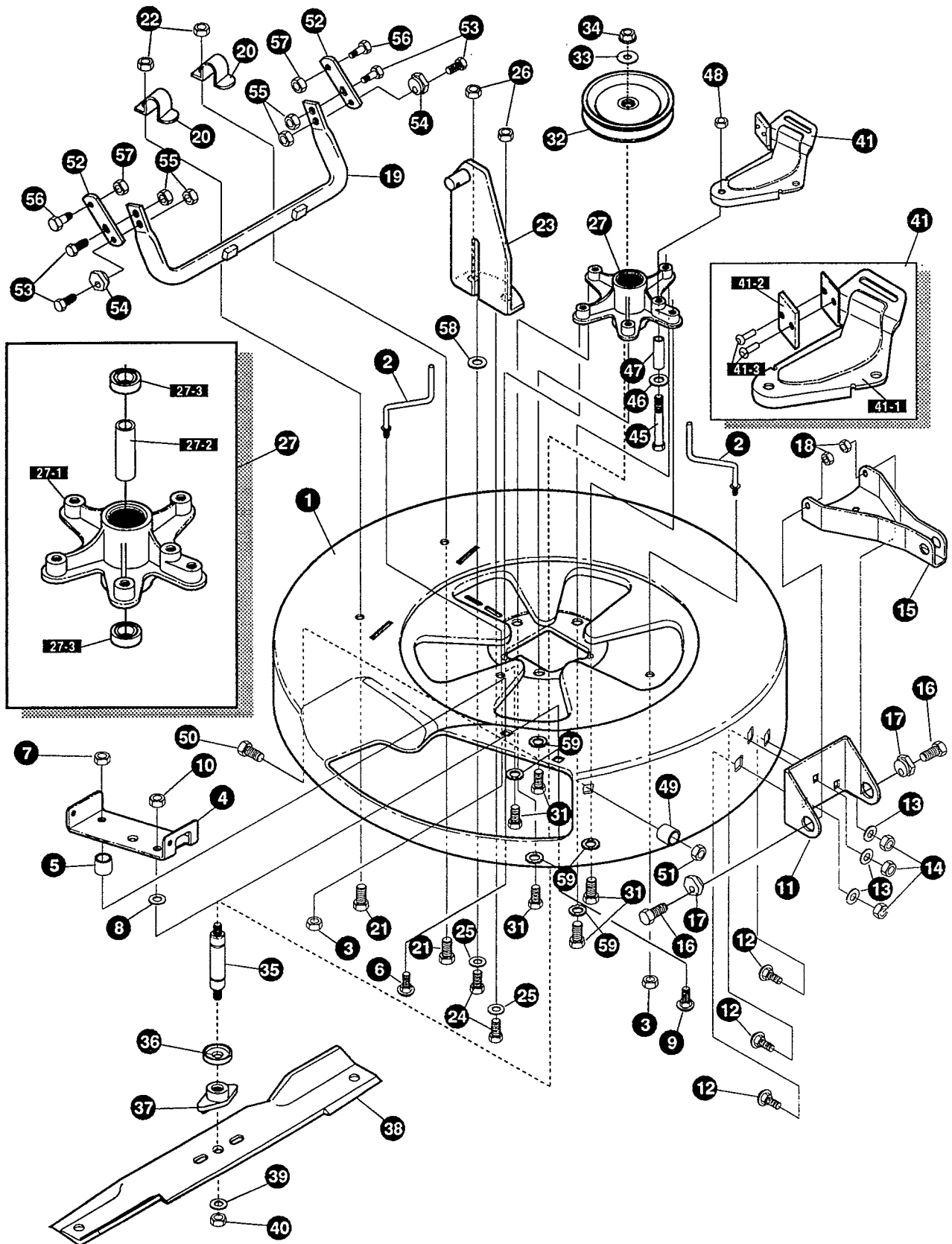
319284 C

KEY#	PART#	DESCRIPTION	QTY
1	*	ENGINE, 8-8.5HP, B&S	1
2	50947	SCREW, 3/8-16 X 1.25 WAHHTAP	3
3	180083	SCREW, 5/16-18 X 1.50 HHC	1
4	44108	NUT, 5/16-18 HWDFLCTRLK	1
5	311651-853	PIPE ASSEMBLY, 8HP, B&S, EXHAUST	1
6	314986	TANK, GAS-NOMA, 1.3 GAL., F-12	1
7	12501	CAP, FUEL 2.5" THROAT	1
8	313150-853	SUPPORT, GAS TANK, F-12	2
9	995346	SCREW, 1/4-20 X .50 WAHHTAP	8
10	47216	TUBING, .25 X .50 X BULK GAS LINE	21.0"
12	47345	CLAMP, HOSE SCREW TYPE	1
13	321240	THROTTLE CONTROL, RER	1
14	35287	SCREW, #8-32 X .38 HHWATAP	2
15	414106	WASHER, FLAT .188 X .38 X .040	2
16	50607	KNOB, ROUND THROTTLE, BLACK	1
17	57366	SCREW, 10-16 X .50 DRILLTITE	4
18	138485	WASHER, EXLK .320 X .61 X .03	1
19	47345	CLAMP, HOSE SCREW TYPE	1

* SEE ENGINE MANUAL

F3595-140

REPAIR PARTS

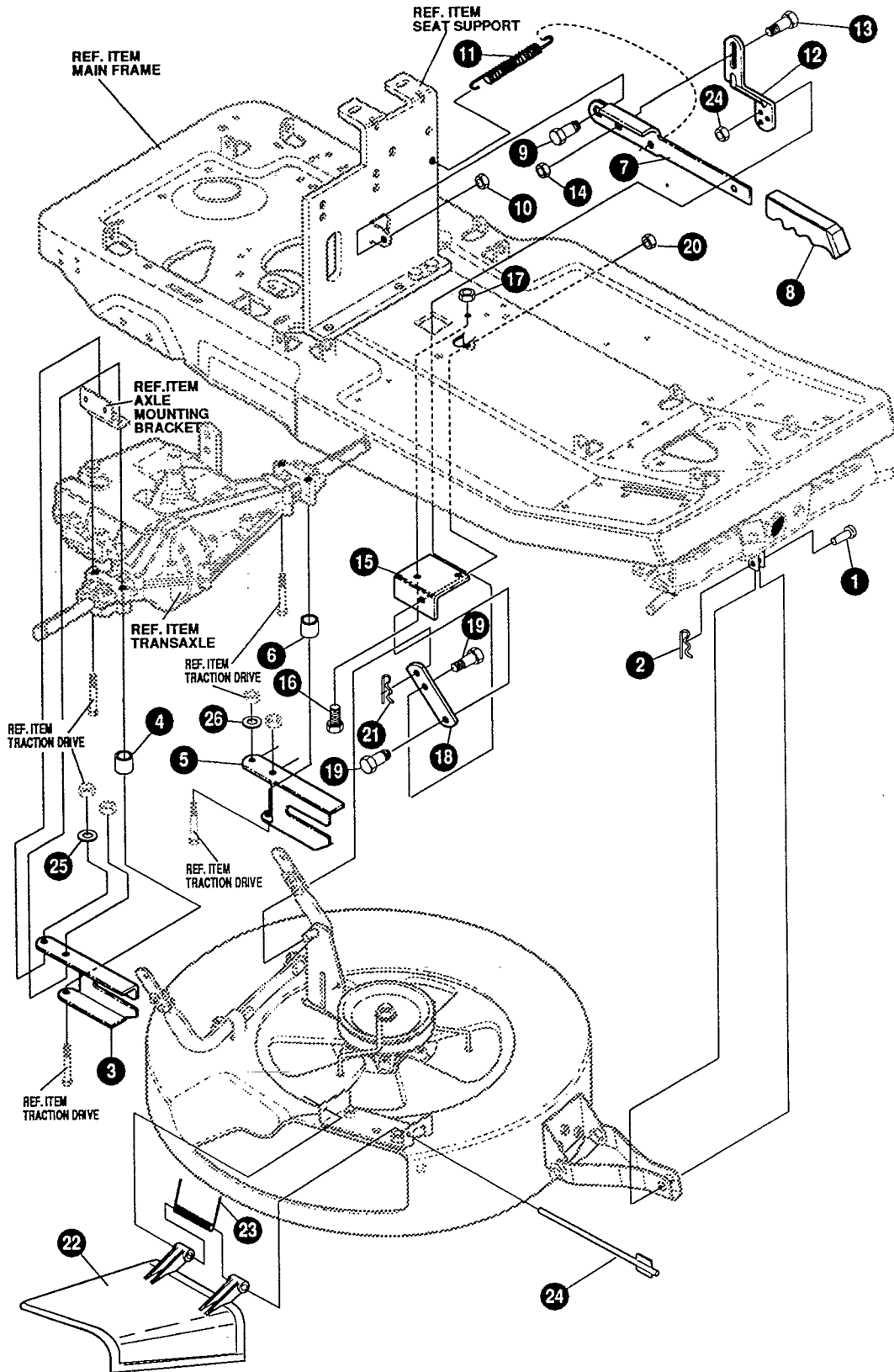


NOTE: ALWAYS USE ORIGINAL EQUIPMENT PARTS.
Use of service/replacement parts other than original equipment parts may void your warranty.

**ALL UNNUMBERED
ITEMS ARE INTERCHANGEABLE
WITH OPPOSITE SIDE**

313589 E

KEY#	PART#	DESCRIPTION	QTY
1	321982-853	DECK, MOWER 30" SF/RER	1
2	57318	GUIDE, BELT 5/16-18 THD	2
3	1498	NUT, 5/16-18 REGHEXCTRLK	2
4	317017	BRACKET, CHUTE MOUNT	1
5	314702	SPACER, SLEEVE .344 X 1.00 X .500 PM	1
6	120290	BOLT, 5/16-18X1.25 CARRLN	1
7	1498	NUT, 5/16-18 REGHEXCTRLK	1
8	45602	WASHER, FLAT .333 X .87 X .119	1
9	126216	BOLT, 5/16-18 X .75 CARRLN	1
10	1498	NUT, 5/16-18 REGHEXCTRLK	1
11	311237-853	BRACKET, MOUNTING, FRONT	1
12	57072	BOLT, 5/16-18 X .63 CARRLN	3
13	120393	WASHER, FLAT .344 X .69 X .065	3
14	1498	NUT, 5/16-18 REGHEXCTRLK	3
15	311236-853	BRACKET, BAR, TOW, FRONT	1
16	180079	SCREW, 5/16-18 X 1.00 HHC	2
17	58247	NUT, ADJUST	2
18	1498	NUT, 5/16-18 REGHEXCTRLK	2
19	313372-853	ASSEMBLY, TUBE, PIVOT	1
20	310672	SUPPORT, PIVOT TUBE	2
21	180077	SCREW, 5/16-18 X .75 HHC	2
22	1498	NUT, 5/16-18 REGHEXCTRLK	2
23	314119-853	ASSEMBLY, LIFT BRACKET	1
24	180077	SCREW, 5/16-18 X .75 HHC	2
25	120393	WASHER, FLAT .344 X .69 X .065	2
26	1498	NUT, 5/16-18 REGHEXCTRLK	2
27	313588	ASSEMBLY, QUILL	1
27-1	314272	QUILL, MACHINED CASTING	1
27-2	314274	TUBE, SPACER, STEEL	1
27-3	313576	BEARING, BALL 6204-2AA-C3	2
32	314273	PULLEY ASSEMBLY	1
33	22265	WASHER, FLAT .515 X 1.38 X .119	1
34	1500	NUT, 1/2-13 REGHCTRLK	1
35	314271	SHAFT, QUILL 30" MOWER	1
36	313577	SHIELD, DUST, BEARING	1
37	313584	HUB, BLADE ADAPTOR	1
38	329988	BLADE, 30" TD MOWER 0.7 WING <i>325251</i>	1
39	22265	WASHER, FLAT .515 X 1.38 X .119	1
40	1500	NUT, 1/2-13 REGHCTRLK	1
41	12229-853	BRACKET, IDLER ASSEMBLY	1
41-1	313510-853	BRACKET, ARM, IDLER	1
41-2	306973	BRAKE PAD - HARD-NF343 (X-31)	1
41-3	41601	RIVET, OVSET .187 DIA X .50 LONG	2
45	180091	SCREW, 5/16-18 X 2.50 HHC	1
46	45602	WASHER, FLAT .333 X .87 X .119	1
47	314824	SPACER, SLEEVE .322 X .63 X 1.810	1
48	44108	NUT, 5/16-18 HWDFLCTRLK	1
49	50520	SPACER	1
50	126216	BOLT, 5/16-18 X .75 CARRLN	1
51	1498	NUT, 5/16-18 REGHEXCTRLK	1
52	314099-853	BRACKET, BAR, REAR STABILIZER	2
53	180079	SCREW, 5/16-18 X 1.00 HHC	4
54	58247	NUT, ADJUST	2
55	1498	NUT, 5/16-18 REGHEXCTRLK	4
56	51940	BOLT, .500 X .437 HSH, 3/8-16	2
57	1499	NUT, 3/8-16 REGHXCTRLK	2
58	45602	WASHER, FLAT .333 X .87 X .119	1
59	138485	WASHER, EXLK .320 X .61 X .03	5

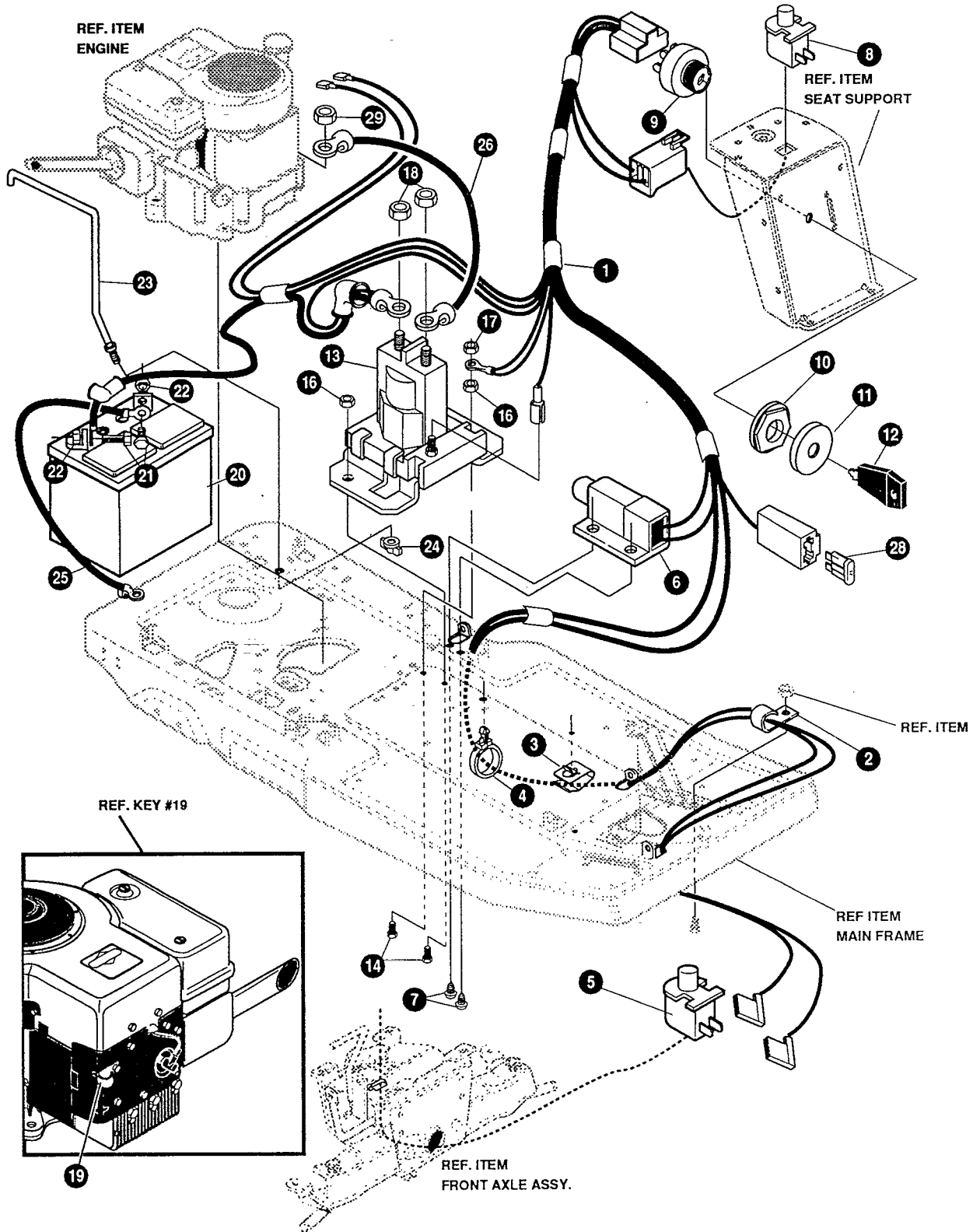


NOTE: ALWAYS USE ORIGINAL EQUIPMENT PARTS.
 Use of service/replacement parts other than original equipment parts may void your warranty.

ALL UNNUMBERED ITEMS ARE INTERCHANGEABLE WITH OPPOSITE SIDE

331490 B

KEY#	PART#	DESCRIPTION	QTY
1	47817	PIN, CLEVIS LONG	1
2	8260	PIN, HAIR .091 DIA X 1.66 LONG	1
3	321371	BRACKET, REAR SUPPORT, RH	1
4	41462	SPACER, SLEEVE .328 X .75 X .312	1
5	321370	BRACKET, REAR SUPPORT, LH	1
6	41462	SPACER, SLEEVE .328 X .75 X .312	1
7	313719-853	HANDLE, HEIGHT ADJUST	1
8	313763	GRIP, HANDLE, LIFT, BLACK	1
9	54855	BOLT, .500 X .345 HHSH, 3/8-16	1
10	1499	NUT, 3/8-16 REGHXCTRLK	1
11	35410	SPRING, .071 X .62 X 4.37	1
12	323897	BRACKET, LINK, UPPER, BLACK	1
13	54855	BOLT, .500 X .345 HHSH, 3/8-16	1
14	1499	NUT, 3/8-16 REGHXCTRLK	1
15	323898	BRACKET, RER, FRAME, BLACK	1
16	180079	SCREW, 5/16-18 X 1.00 HHC	1
17	1498	NUT, 5/16-18 REGHEXCTRLK	1
18	323899	BRACKET, LINK, LOWER, BLACK	1
19	313560	BOLT, .500 X .225 HHSH, 5/16-18	2
20	1498	NUT, 5/16-18 REGHEXCTRLK	2
21	56180	PIN, HAIR .091 DIA X 1.62 LONG	1
22	315314	CHUTE DEFLECTOR, 30" DECK	1
23	314975	SPRING, TORSION, CHUTE DEFLECTOR	1
24	304424	ROD, PIVOT DECK, .312 D X 7.25	1
25	73787	WASHER, FLAT .330 X .75 X .1793	1
26	73787	WASHER, FLAT .330 X .75 X .1793	1



NOTE: ALWAYS USE ORIGINAL EQUIPMENT PARTS.
 Use of service/replacement parts other than original equipment parts may void your warranty.

ALL UNNUMBERED ITEMS ARE INTERCHANGEABLE WITH OPPOSITE SIDE

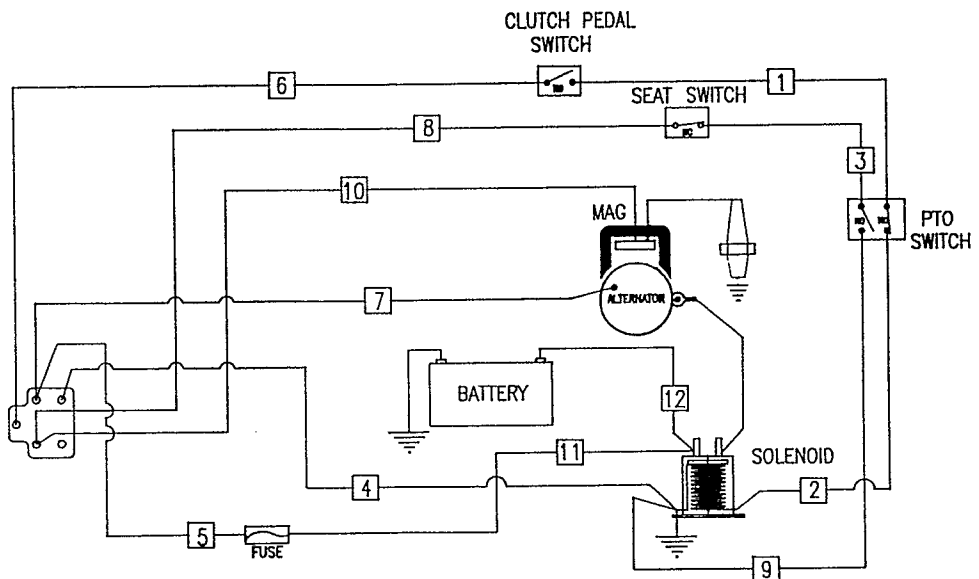
332169 B

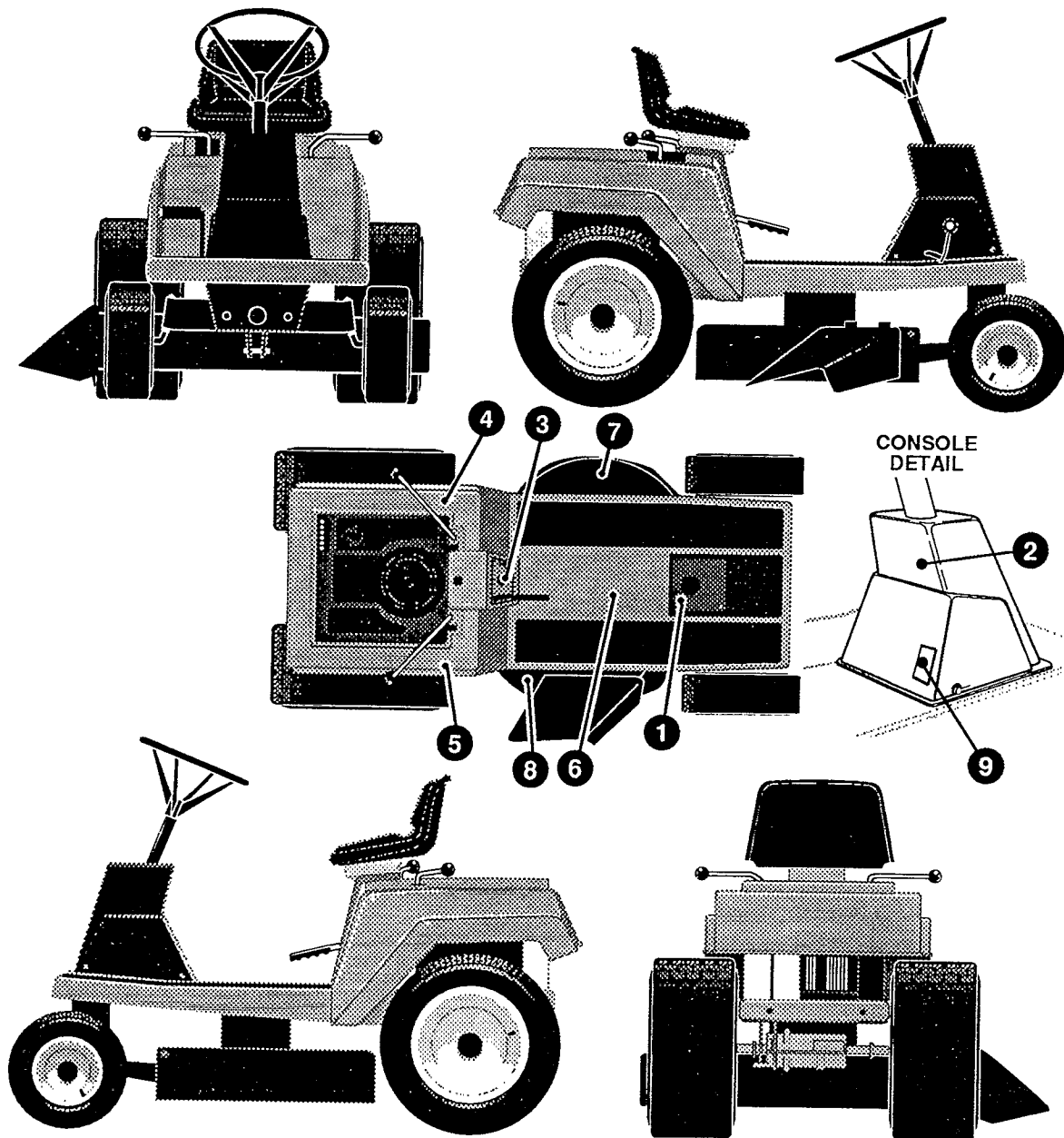
KEY#	PART#	DESCRIPTION	QTY
1	331444	HARNESS, WIRE, RER, C1, 8-11H[P, B&S	1
2	57569	RETAINER, .31 ID X .62 X .03 WIRE	1
3	335505	CLIP, TRW #C3958-022-4	3
4	309698	CLIP, WIRE ROUTING, SNAP-IN	1
5	326653	SWITCH, SNAP MOUNT NO .055/.116 GRAY	1
6	57476	SWITCH, SCREW MOUNT, DP, NC, NO BLACK	1
7	57220	SCREW, #12 X .50 PHPNHTAP, BLACK	2
8	326654	SWITCH, SNAP MOUNT, NC .140 BLUE	1
9	327355	SWITCH-IGNITION (AFTER FIRE) 3 POSITION	1
10	327352	NUT, 5/8-8 ACME DELTA FOR BOOT	1
11	300194	BOOT, IGNITION SWITCH	1
12	327350	KEY,IGNITION SWITCH, MLD.DELTA	1
13	53716	SOLENOID	1
14	187745	SCREW, 1/4-20 X .75 HXSEMMA	2
16	1502	NUT, 1/4-20 REGHEXCTRLK	2
17	271172	NUT, 1/4-20 REGHEXKEPS	1
18	271187	NUT, 5/16-24 HKEPS	2
19	57569	RETAINER, .31 ID X .62 X .03 WIRE	1
20	92693	BATTERY, 6 PLATE, MAINTENANCE FREE	1
21	180020	SCREW, 1/4-20 X .75 HHC	2
22	271172	NUT, 1/4-20 REGHEXKEPS	2
23	327784	SUPPORT, BATTERY, HOLDDOWN, U-1	1
24	325232	NUT, WING 1/4-20 NYLON	1
25	55511	WIRE, GROUND, 12.5"	1
26	322698	WIRE, STARTER, RED, 8.5	1
28	302031	FUSE SPADE TYPE 32V 15A	1
29	124818	NUT, 1/4-20 REGHXJAM	1

POS.	G	M	B	L	S
OFF	○	○			
RUN/LIGHTS		○	○		
START			○	○	

IGNITION SWITCH
327355

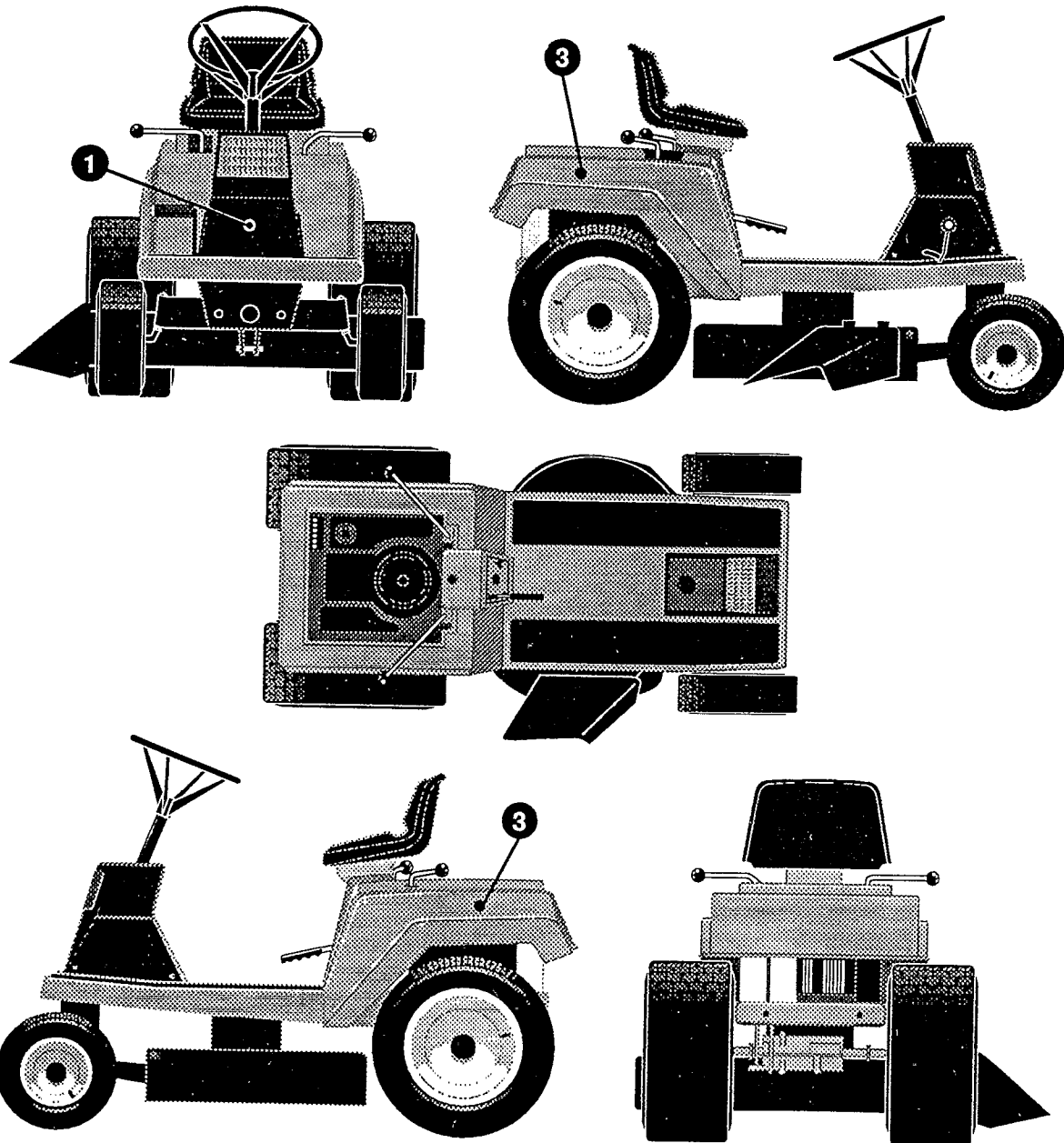
IGNITION
CONNECTOR





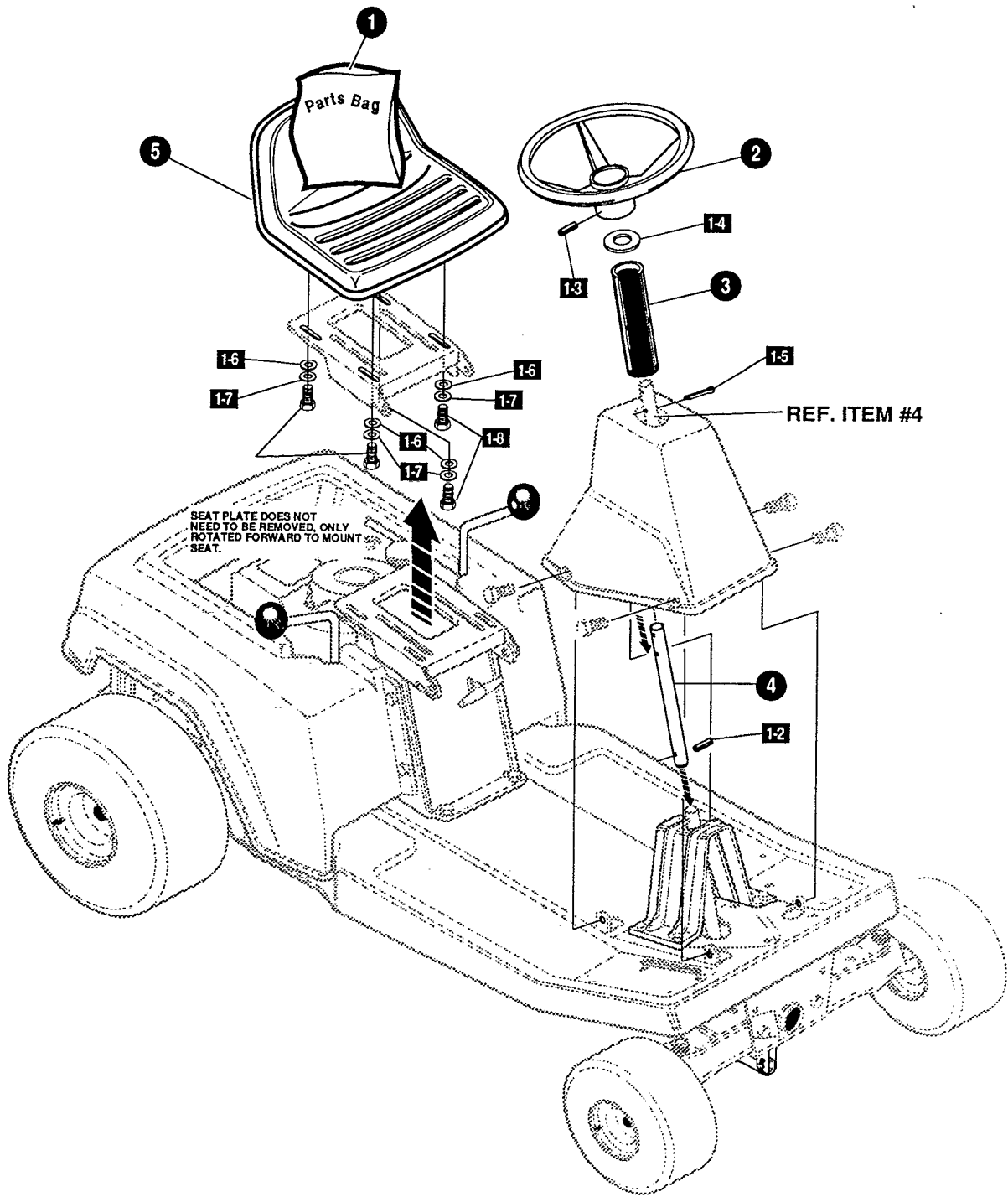
KEY#	PART#	DESCRIPTION	QTY
1	317348	DECAL,PARK'N/BRAKE ISO	1
2	311227	DECAL, HEARING PROTECTION	1
3	320706	DECAL, CONTROL 30° , NO LITE	1
4	305397	DECAL, PTO ENGAGEMENT, ISO, F12	1
5	311232	DECAL, SHIFT, 5SP, ISO, DOM.	1
6	402747	DECAL, CONSOLE, SYMBOLIC, SF	1
7	402700	DECAL, CAUTION DECK, LH	1
8	402701	DECAL, CAUTION DECK, RH, CUT HAND	1
9	68903	DECAL, BRAKE/CLUTCH ISO	1

335595 A



KEY#	PART#	DESCRIPTION	QTY
1	323627	NAME PLATE, 8/30 WHITE	1
3	301007	NAME PLATE, LG. DYNAMARK WHITE	2

335597 A



KEY#	PART#	DESCRIPTION	QTY
1		PARTS BAG, RER	1
1-2	417375	PIN, SPRING .187 DIA X 1.25 LONG	1
1-3	456836	PIN, SPRING .250 DIA X 2.25 LONG	1
1-4	301702	WASHER, FLAT .90 X 1.56 X .089	1
1-5	120123	PIN, COTTER .125 DIA X 1.25 LONG	1
1-6	120393	WASHER, FLAT .344 X .69 X .065	4
1-7	120638	WASHER, HVSP TLK .328 X .60 X .09	4
1-8	180077	SCREW, 5/16-18 X .75 HHC	4
2	301465	STEERING WHEEL, DEEP DISH	1
3	305605	TUBE-DECORATIVE, 6.00" LONG, BLACK	1
4	300797	STEERING TUBE	1
5	304315	SEAT, MICH, FOR RER	1

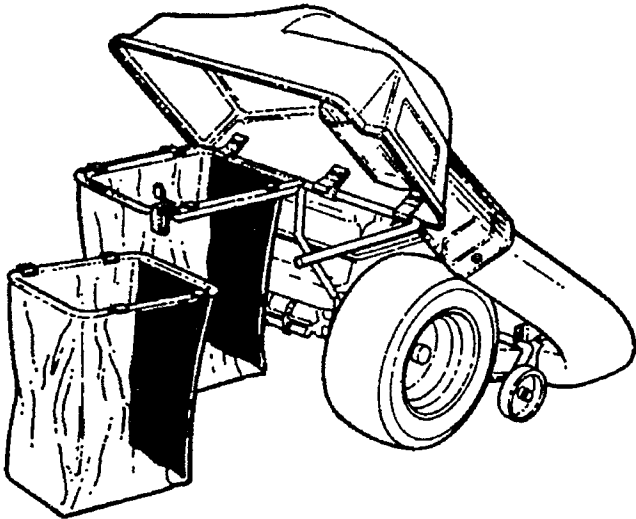
331716 B

F3595-140

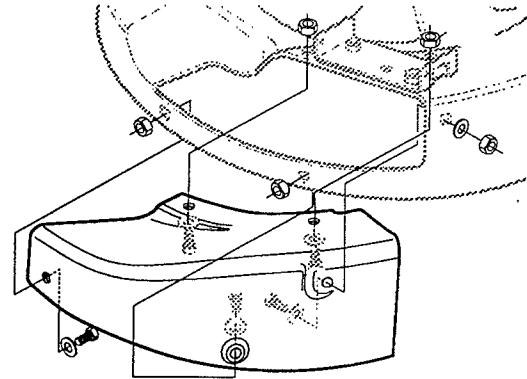
ACCESSORIES

Contact the dealer where your tractor was purchased for the available accessories. If you are unable to contact the dealer, write to the address on the warranty page of your Operator's manual.

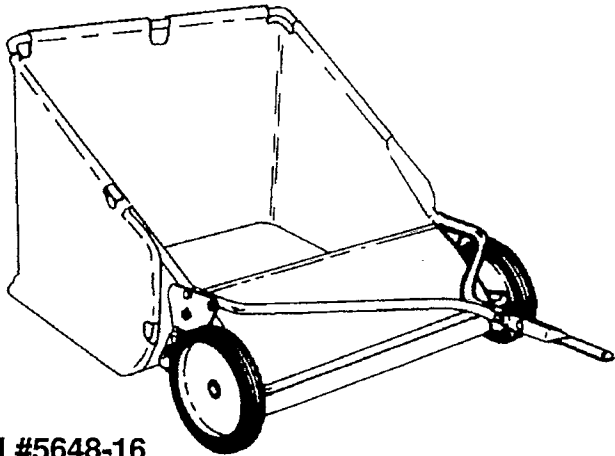
REAR ENGINE RIDER



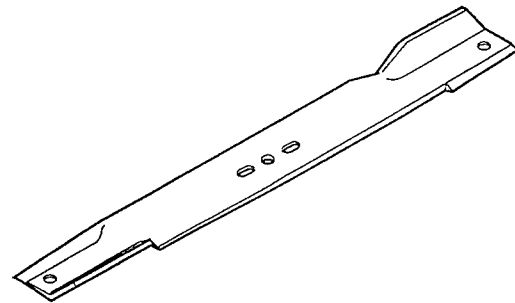
Model #5708-17
Grass Collector (30" decks)



5714-00 Mulching Kit (30" Deck)



Model #5648-16
Tow Behind Lawn Sweeper for Grass and Leaves



314275 -30" Standard Lift Blade

OTHER ACCESSORIES

Model	Description
5709-02	Front Weight Box - holds 35 lbs.
322397	30" Mulching blade