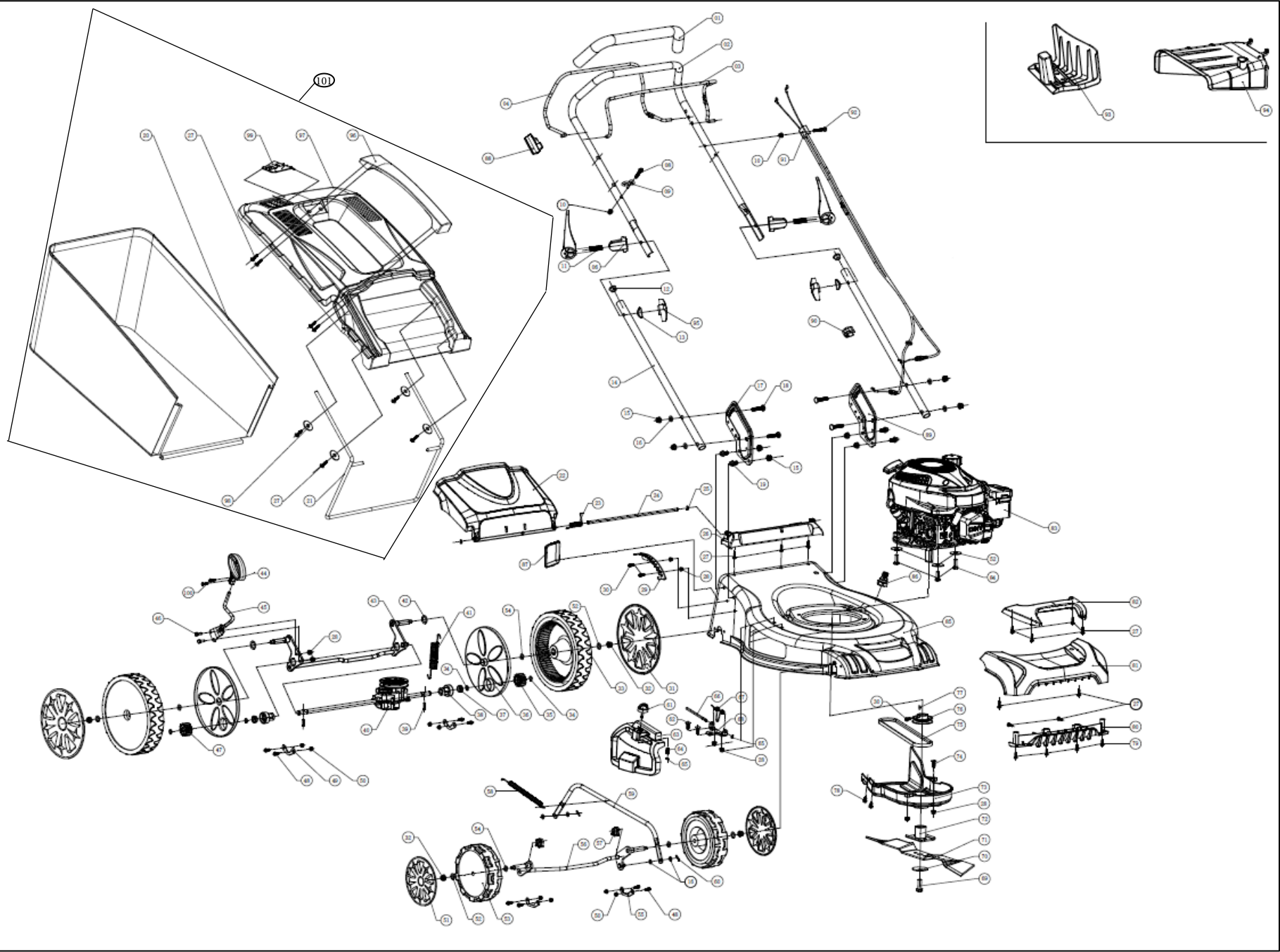


Model: RS 4610TR/W

Part Number: 90063235

Year: 2024



| POS | QTY | PARTNUMBER | BESKRIVELSE                   | DESCRIPTION                              |
|-----|-----|------------|-------------------------------|--|
| 101 | 1   | 451335     | OPSAMPLERKASSE KPL.           | GRASS CATCHER ASSEMBLY                   |
| 100 | 2   | 452612     | SKRUE                         | CROSS RECESSED PAN HEAD SCREWS           |
| 99  | 1   | 451237     | INDIKATOR FOR FYLDT OPSAMPLER | GRASS CATCHER FULL WARNING               |
| 98  | 1   | 452613     | SKIVE Ø6                      | WASHER 6*25                              |
| 97  | 1   | 451239     | OPSAMPLER TOP                 | GRASS CATCHER COVER M6*45                |
| 96  | 1   | 451240     | HÅNDTAG FOR TOP               | GRASS CATCHER COVER LIFT HANDLE          |
| 95  | 2   | 451241     | FINGERSKRUE                   | TRIANGLE KNOB                            |
| 94  | 1   | 451242     | SIDEUDKASTER SKÆRM            | SIDE OUTLET                              |
| 93  | 1   | 451243     | BIOPLUG                       | MULCHING PLUG                            |
| 92  | 1   | 451244     | BOLT M6X35                    | HEXAGON FLANGE BOLT M6*35                |
| 91  | 1   | 452614     | DOBBELT KABEL                 | CABLE ASSEMBLY                           |
| 90  | 1   | 451246     | KABELHOLDER                   | WIRE CLIP                                |
| 89  | 1   | 451247     | STYRHOLDER VENSTRE            | HANDLE BAR FIXING SEAT( LEFT)            |
| 88  | 1   | 452615     | BLOK                          | TIE ROD LIMIT BLOCK                      |
| 87  | 1   | 452616     | DÆKSEL                        | MAINTENANCE WINDOW                       |
| 86  | 1   | 451250     | VASKESTUDS                    | CLEANING NOZZLE                          |
| 85  | 1   | 452617     | KLIPPESKJOLD                  | "CHASSIS 18"" SELF-PROPELLED_PT BLACK 3C |
| 84  | 3   | 451252     | BOLT M8X25                    | BOLT M8*25                               |
| 83  | 1   | 451253     | MOTOR RATO RV145/PRIME        | ENGINE RV145-S                           |
| 82  | 1   | 452618     | DÆKSEL                        | FRONT TRIM HOOD HANDLE_PT BLACK 3C       |
| 81  | 1   | 451255     | FORSKÆRM NEDRE DEL            | FRONT TRIM HOOD                          |
| 80  | 1   | 452619     | SKÆRM                         | CARDING SET                              |
| 79  | 4   | 451309     | STJERNESKRUE ST4,8X16         | CROSSED TAPPING SCREW ST4.8*16           |
| 78  | 2   | 451258     | SKRUE ST6,3X16                | CROSS RECESSED PAN HEAD SELF-TAPPING SCR |
| 77  | 1   | 451259     | NOT                           | WOODRUFF KEY 4*6.5*16                    |
| 76  | 1   | 451260     | REMSKIVE                      | DRIVING PULLEY                           |
| 75  | 1   | 452620     | KILEREM                       | BELT 46                                  |
| 74  | 1   | 451262     | BOLT M6X20                    | SMALL SEMICIRCULAR HEAD LOW SQUARE NECK  |
| 73  | 1   | 451263     | REMSKÆRM 46 CM                | BELT COVER 46                            |
| 72  | 1   | 452621     | KNIVHOLDER                    | BLADE SEAT                               |
| 71  | 1   | 451265     | KNIV                          | BLADE                                    |
| 70  | 1   | 451266     | SKIVE FOR KNIV Ø10*Ø45*2.5    | BLADE WASHER                             |
| 69  | 1   | 451267     | KNIVBOLT                      | IMPERIAL THREAD HEXAGON BOLT 3/8-24UNF*4 |
| 68  | 1   | 451268     | BESLAG                        | SIDE BRACKET                             |
| 67  | 1   | 451269     | FJEDER                        | SIDE ROW COVER SPRING                    |
| 66  | 1   | 451270     | AKSEL                         | SIDE SHAFT                               |
| 65  | 2   | 451271     | SKIVE Ø5                      | SPLIT WASHER ?5                          |
| 64  | 1   | 451272     | FJEDER                        | PUSH BUTTON SPRING                       |
| 63  | 1   | 451273     | SKÆRM FOR BIOKLIP             | SIDE OUTLET COVER 46                     |
| 62  | 2   | 451274     | BOLT M6X14                    | SMALL SEMICIRCULAR HEAD LOW SQUARE NECK  |
| 61  | 1   | 451275     | LÅSEHÅNDTAG                   | LOCK BUTTON                              |

| POS | QTY | PARTNUMBER | BESKRIVELSE            | DESCRIPTION                                 |
|-----|-----|------------|------------------------|---|
| 60  | 2   | 451276     | SPLIT                  | B COTTER 1*1.6*18                           |
| 59  | 1   | 452622     | HØJDEJUSTERINGSSTANG   | CONNECTION ROD 46                           |
| 58  | 1   | 451278     | FJEDER                 | CONNECTION ROD SPRING                       |
| 57  | 2   | 451279     | KRAVE                  | WHEEL AXLE SLEEVE                           |
| 56  | 1   | 452623     | FORHJULSAKSEL          | FRONT WHEEL AXLE 46                         |
| 55  | 2   | 451281     | PLADE                  | FIXING PLATE                                |
| 54  | 4   | 451282     | SKIVE 13X20X0,5        | WAVE TYPE SPRING<br>WASHER 13*20*0.5        |
| 53  | 2   | 451283     | FORHJUL 7"             | WHEEL 7"                                    |
| 52  | 7   | 451284     | SKIVE Ø8               | FLAT WASHER ?8*?24*2                        |
| 51  | 2   | 451285     | NAVKAPSEL 7"           | WHEEL COVER                                 |
| 50  | 8   | 451308     | MØTRIK M6              | HEXAGON FLANGE NUT M6                       |
| 49  | 2   | 451287     | PLADE                  | FIXING PLATE                                |
| 48  | 8   | 451306     | BOLT M6X12             | HEXAGON FLANGE BOLT<br>M6*12                |
| 47  | 1   | 452624     | GEAR HØJRE             | DRIVE GEAR (RIGHT) 46                       |
| 46  | 2   | 451290     | BOLT M6X16             | HEXAGON SOCKET SCREWS<br>WITH FLAT ROUND HE |
| 45  | 1   | 452625     | SKIFTEJUSTERINGSSTANG  | SHIFT ADJUSTMENT ROD                        |
| 44  | 1   | 452626     | HÅNDTAG                | SHIFT ADJUSTMENT ROD<br>SHEATH              |
| 43  | 1   | 452627     | AKSEL                  | REAR WHEEL SHAFT 46                         |
| 42  | 2   | 451294     | PAKNING                | OIL DRAIN PLUG ALUMINUM<br>GASKET ?16.2*?24 |
| 41  | 1   | 451295     | FJEDER                 | SELF-WALKING SPRING                         |
| 40  | 1   | 452628     | GEARBOX                | SELF-PROPELLED ASSEMBLY<br>46               |
| 39  | 2   | 451297     | STIFT Ø5               | STRAIGHT PIN ?5*21.5                        |
| 38  | 2   | 451298     | KRAVE                  | AXLE SHEATHING                              |
| 37  | 2   | 451299     | KUGLELEJE Ø12.7        | PUNCH BEARING                               |
| 36  | 2   | 451300     | STØVDÆKSEL 10"         | DUST COVER                                  |
| 35  | 1   | 452629     | GEAR VENSTRE           | DRIVE GEAR (LEFT) 46                        |
| 34  | 4   | 451302     | SEEGERRING Ø12         | SHAFT RING ?12                              |
| 33  | 2   | 451303     | BAGHJUL UDEN LEJE 10"  | WHEEL                                       |
| 32  | 4   | 451304     | MØTRIK M8              | HEXAGON NYLON SELF LOCK<br>NUT M8           |
| 31  | 2   | 451305     | NAVKAPSEL 10"          | WHEEL COVER                                 |
| 30  | 3   | 451306     | BOLT M6X12             | HEXAGON FLANGE BOLT<br>M6*12                |
| 29  | 1   | 452630     | HØJDEJUSTERINGSBLOK    | GEAR ADJUSTMENT<br>POSITIONING BLOCK        |
| 28  | 8   | 451308     | MØTRIK M6              | HEXAGON FLANGE NUT M6                       |
| 27  | 11  | 451309     | STJERNESKRUE ST4,8X16  | CROSSED TAPPING SCREW<br>ST4.8*16           |
| 26  | 1   | 451310     | HOLDER                 | REAR COVER BASE<br>SUPPORT                  |
| 25  | 2   | 451311     | FJEDERSKIVE Ø6         | SPLIT WASHER ?6                             |
| 24  | 1   | 451312     | AKSEL                  | REAR COVER SHAFT                            |
| 23  | 1   | 451313     | FJEDER                 | REAR COVER TORSIONAL<br>SPRING              |
| 22  | 1   | 451314     | UDKASTERKLAP BAG       | REAR COVER                                  |
| 21  | 1   | 451315     | RAMME TIL OPSAMLERPOSE | FABRIC BAG FRAME                            |
| 20  | 1   | 451336     | OPSAMLERPOSE           | FABRIC BAG                                  |

| POS | QTY | PARTNUMBER | BESKRIVELSE             | DESCRIPTION                    |
|-----|-----|------------|-------------------------|--------------------------------|
| 19  | 4   | 451316     | BOLT M8X12              | HEXAGON FLANGE BOLT M8*12      |
| 18  | 4   | 451317     | BOLT M8X35              | BOLT M8*35                     |
| 17  | 1   | 451318     | STYRHOLDER HØJRE        | HANDLE BAR FIXING SEAT( RIGHT) |
| 16  | 8   | 451319     | SKIVE Ø8                | FLAT WASHER ?8                 |
| 15  | 8   | 452631     | MØTRIK M8               | FLYWHEEL NUT M8                |
| 14  | 2   | 451321     | STYRRØR NEDRE           | MIDDLE HANDLEBAR               |
| 13  | 2   | 451322     | SKIVE M8X45             | INSULATION PLATE2 M8*45        |
| 12  | 2   | 451323     | PROP                    | BUMPER CAP                     |
| 11  | 2   | 451324     | HÅNDTAG                 | FAST LOCK KNOB                 |
| 10  | 3   | 451325     | MØTRIK M6               | HEXAGON NUT M6                 |
| 9   | 1   | 451326     | HOLDER FOR STARTSNOR    | STARTER HOOK                   |
| 8   | 1   | 451327     | BOLT M6X30              | BOLT M6*30                     |
| 6   | 2   | 451329     | HOLDER                  | FAST LOCK KNOB CUSHION BLOCK   |
| 4   | 1   | 452632     | BØJLE FOR FREMTRÆK      | DRIVE ROD                      |
| 3   | 1   | 452633     | BØJLE FOR STOP AF MOTOR | FLAMEOUT ROD                   |
| 2   | 1   | 452634     | STYR                    | HANDLE                         |
| 1   | 1   | 451334     | SOFTGRIB                | HANDLEBAR SLEEVE               |