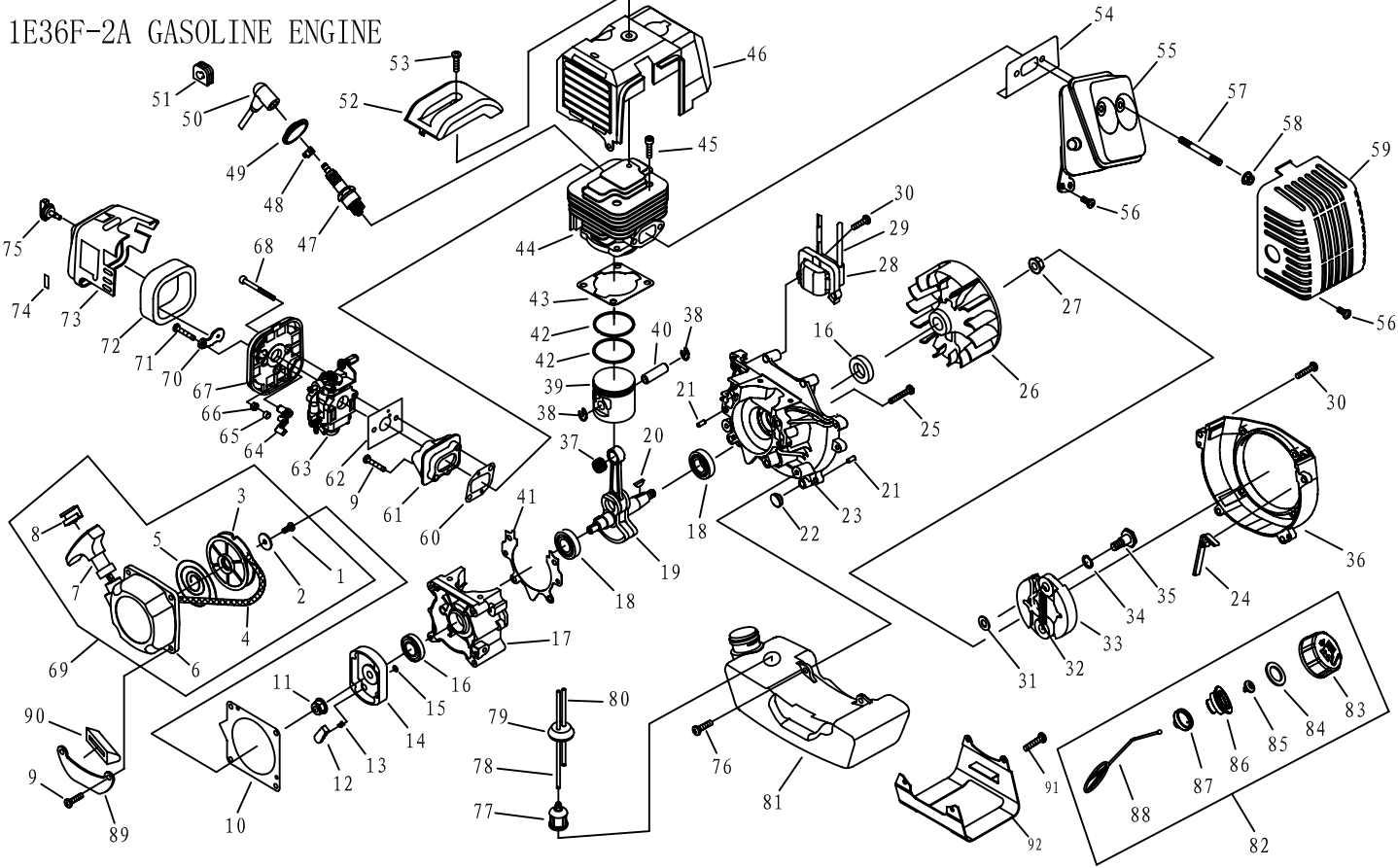


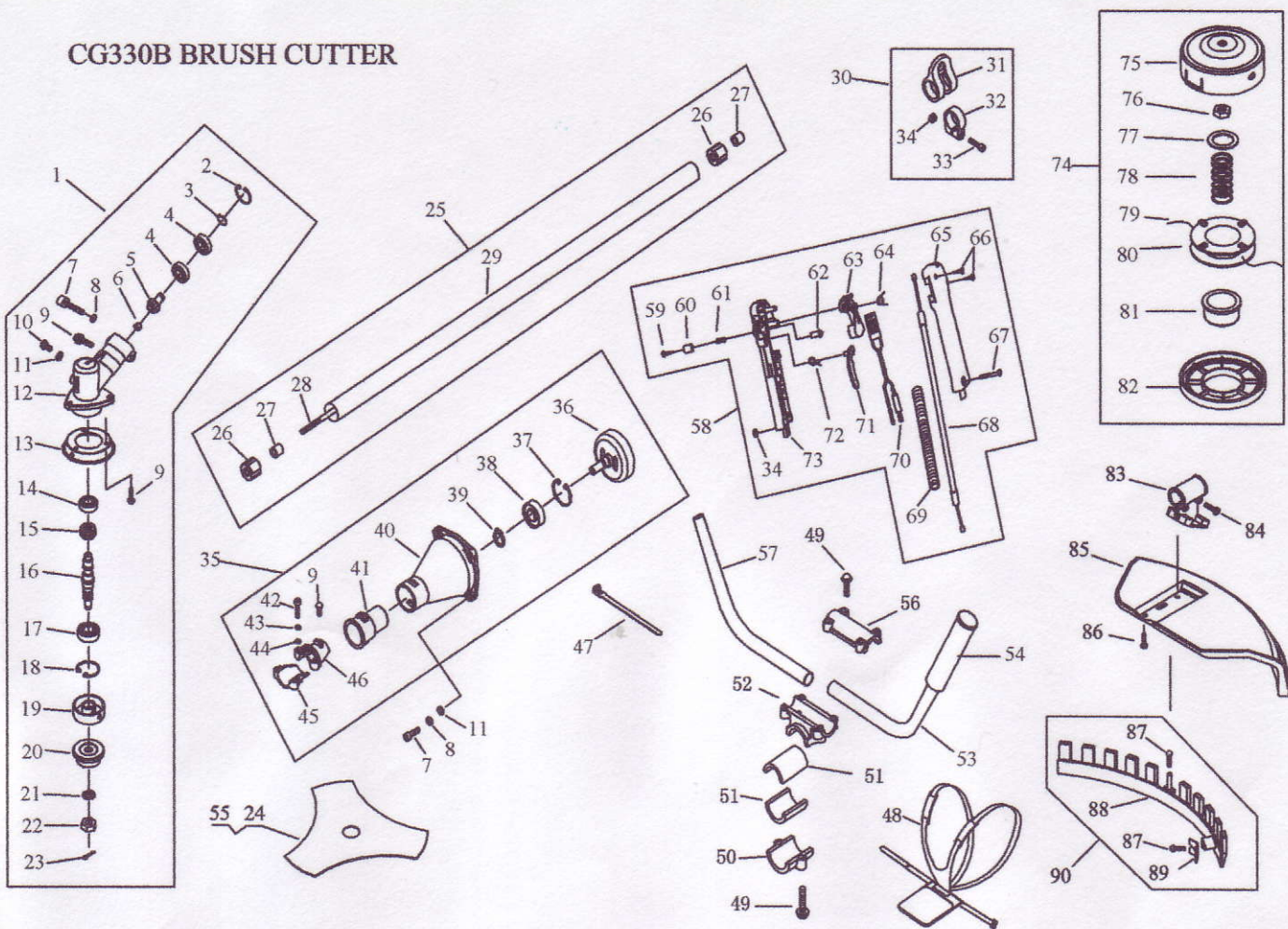
1E36F-2A GASOLINE ENGINE



POS	QTY	PARTNUMBER	BESKRIVELSE	DESCRIPTION
1	1	11GB/T67M5X12	SKRUE M5X12	SCREW M5X12
2	1	111E40F-511-2	SKIVE	WASHER
3	1	111E40F-511-1	SNORHJUL	START ROPE REEL
5	1	662045	START FJEDER	RECOIL SPRING
6	1	111E40F-5111	STARTDÆKSEL	START COVER ASSY
7	1	111E40FP-3Z4-2	STARHÅNDTAG	STARTER HANDLE
8	1	111E40FP-3Z4-4	HOLDER FOR STARTSNOR	WASHER
9	4	11GB/T90744M5 X20	SKRUE M5X20	SCREW M5X20
10	1	111E40F-5-10	PAKNING	GASKET
11	1	11GB/T6170M8	MØTRIK M8	NUT M8
12	1	111E46FP4-2	PAL	START CLAW
13	1	111E36F12-2	FJEDER	START SPRING
14	1	111E40F-57-1	PALHOLDER	START REEL
15	1	11GB896	STOP RING 4	STOP RING 4
16	2	111E36F2	PAKDÅSE 12X22X14	OIL SEAL 12X22X14
17	1	111E36F-26-2	KRUMTAPHUS	CRANK CASE
18	2	11GB/T2766201/ P5	KUGLELEJE 6201/P5	BEARING 6201/P5
19	1	111E36F-243	KRUMTAP	CRANK SHAFT
20	1	11GB/T10993X5 X13	NOT 3X5X13	
21	4	11GB/T119B4X1 0	PIN B4X10	
22	2	111E40F-5A-3	GUMMIKLODS	RUBBER WASHER
23	1	111E36F-26-1	KRUMTAPHUS	CRANK CASE
24	1	111E36F-2-11	KROG	FLASH PAN
25	4	11GB/T90744M5 X12	SKRUE M5X12	SCREW M5X12
26	1	111E36F-232	STATOR KOMPLET	MAGNETO ASSY
27	1	11GB/T61771M8	MØTRIK M8	NUT M8
28	1	111E36F-232	STATOR KOMPLET	MAGNETO ASSY
29	1	111E36F-231	LEDNING	CORD COMP
30	6	11GB/T907413M 5X20	BOLT M5X20	
31	1	111E36F-3B	SKIVE B	WASHER B
32	1	111E40F-56-1	FJEDER	SPRING
33	2	111E40F-561	KOBLINGSSKO	EXPANDER
34	2	111E40F-5-11	SKIVE	WASHER
35	2	111E40F-5-12	SKRUE	SCREW PIN
36	1	111E36F-2-8	DÆKSEL	FAN COVER
37	1	111E36F-241	LEJE	BEARING
38	2	111E36F10-2	RING	
39	1	111E36F-242	STEMPEL	PISTON
40	1	111E36F10-1	KRYDSPIND	PISTON PIN
41	1	111E36F-26-3	PAKNING	GASKET
42	2	111E36F10-3	STEMPELRING STK	PISTON RING
43	1	111E36F-2-6	CYLINDER PAKNING	GASKET
44	1	111E36F-2-4	CYLINDER	CYLINDER
45	4	11GB/T701M5X1 6	SKRUE M5X16	SCREW M5X16
46	1	111E36F-25	DÆKSEL	GUIDE COVER ASSY

POS	QTY	PARTNUMBER	BESKRIVELSE	DESCRIPTION
47	1	11L6	TÆNDRØR	SPARK PLUG
48	1	111E40F-3A8-2	FJEDER TÆNDRØRSHÆTTE	SPRING COVER
49	1	111E34F5-3	KAPPE	CAP
50	1	111E34F5-2	TÆNDRØRSHÆTTE GUMMI	SPARKPLUG CAP
51	1	111E40F-53-1	PROP	PLUG
52	1	111E36F-2-7	DÆKSEL ØVRE	UPPER COVER
53	1	11GB/T90744M5 X20	SKRUE M5X20	SCREW M5X20
54	1	111E36F-2-5	PAKNING F UDSTØDNING	GASKET
55	1	111E36F-22	UDSTØDNING	MUFFLER
56	3	11GB/T90744M5 X12	SKRUE M5X12	SCREW M5X12
57	2	111E36F-2-9	BOLT	
58	2	11GB/T61771M5	MØTRIK M5	NUT M5
59	1	111E36F-27	DÆKSEL FOR UDSTØDNING	MUFFLER COVER
60	1	111E36F-2-2	PAKNING	GASKET
61	1	111E36F-2A-2	INDSUGNINGSSTUDS	ADMITTING PIPE
62	1	111E36F-2A-1	PAKNING	GASKET
63	1	111E36F-2A1	KARBURATOR	CARBURETOR
64	1	111E34F1-2	CHOKERHÅNDTAG	CHOKERHANDLE
65	1	111E34F1-7	STOP RING	STOP RING
66	1	11GB/T6172M4	MØTRIK M4	NUT M4
67	1	111E34F11	LUFTFILTERHUS	AIR FILTER HOUSING
68	2	11GB/T90744M5 X50	SKRUE M5X50	SCREW M5X50
69	1	111E40F-511	STARTER KPL	STARTER ASSY
70	1	111E34F1-3	CHOKER	CHOKE
71	1	296028	PLADESKRUE M4,2X13 SPIDS	SCREW M4,2X13
72	1	111E34F1-1	LUFTFILTER	AIRFILTER
73	1	111E34FA1-1	LUFTFILTERDÆKSEL	CLEANER OUTSIDE COVER
74	1	111E40F-3A3-5	LABEL	
75	1	111E34F12	BOLT	BOLT
76	2	11GB/T90744M5 X16	SKRUE M5X16	SCREW M5X16
77	1	111E34F92-3	FILTER	CLEANER
78	1	111E36F-2A31-2	SLANGE UDLØB	OUTLET FUEL PIPE
79	1	111E36FF81-1	PROP/GENNEMFØRING	PLUG
80	1	111E36F-2A31-1	SLANGE TILGANG	INLET FUEL PIPE
81	1	111E36F-2A3-1	TANK	FUEL TANK
82	1	111E32FL62	BENZINLÅG KPL.	FUEL COVER CPL.
83	1	111E32FL62-1	TANKDÆKSEL	FUELTANK CAP
84	1	11CG420131-2	PAKNING BENZINLÅG	GASKET FUEL CAP
85	1	11EB-41541	BENZINLÅG KPL.	GASOLINE LID
86	1	111E32FL62-2	KAPPE	CAP
87	1	11EB-41541	BENZINLÅG KPL.	GASOLINE LID
88	1	11EB-41541	BENZINLÅG KPL.	GASOLINE LID
89	1	111E40F-5A-4	HOLDER	STAND
90	1	111E40F-5A-2	GUMMIDÆKSEL	RUBBER COVER
91	2	11GB/T90744M5 X20	SKRUE M5X20	SCREW M5X20
92	1	11CG330B-3	GUMMISKIVE	RUBBER WASHER

CG330B BRUSH CUTTER



POS	QTY	PARTNUMBER	BESKRIVELSE	DESCRIPTION
1	1	11CG4153	VINKEKGEAR KPL.	GEAR CASE ASSY
2	1	11GB/T8932	STOP RING 26	
3	1	11GB/T8941	STOP RING 8	STOP RING 8
4	2	11GB/T2766000 2RS/P5	KUGLELEJE 6000 2RS/P5	
5	1	11CG415D6-4	SPIDSHJUL	PINION
6	1	11CG4153-1	DÆKSEL	CAP
7	5	662036	SKRUE M5X20	SCREW M5X20
8	5	11GB/T93	SKIVE	WASHER
9	4	11GB/T90744M5 X12	SKRUE M5X12	SCREW M5X12
10	1	11GB/T292M6X1 2	SKRUE M6X12	BOLT M6X12
11	5	11GB/T9716	SKIVE 6	WASHER 6
12	1	11BG305124-4	VINKELGEAR HUS	GEAR CASE
13	1	11BG305124-9	DÆKSEL	COVER
14	1	11GB/T2766000/ P5	KUGLELEJE 6000/P5	BEARING 6000/P5
15	1	11BG-32895-2	KRONHJUL	GEAR
16	1	11CG305F1-1	AKSEL	GEAR SHAFT
17	1	11GB/T2766000 2RS/P5	KUGLELEJE 6000 2RS/P5	
18	1	11GB/T893232	STOPRING 32	
19	1	11BG305124-5	HOLDER A	SUPPORT A
20	1	11CG305F1-3	HOLDER B	SUPPORT B
21	1	11GB/T862110	SKIVE 10	WASHER 10
22	1	11CG305F1-4	MØTRIK	NUT
23	1	11GB/t912X16	STIFT 2X16	PIN 2X16
24	1	5603-250	3-TANDSKLINGE	3-TOOTH BLADE
25	1	11CG415-CE1	RØR 1490 MM KOMPLET	PIPE 1490 MM ASSY
26	6	11BG-32894-5	GUMMIBØS	BUSHING
27	6	11BG-328944-4	OLIETÆTNINGSRING	
28	1	11CG4202-3	AKSEL INDER LANG	DRIVE SHAFT LONG
29	1	11CG415-CE1	RØR 1490 MM KOMPLET	PIPE 1490 MM ASSY
31	1	11CG26031	HOLDER	HARNESS CLAMP
32	1	11CG2603-1	HOLDER	CLAMP
33	1	11GB/T701M5X2 0	SKRUE M5X20	SCREW M5X20
34	1	90100660	STÅLMØTRIK M5	NUT M5
35	1	11CG4152	KOBLING KPL	CLUTCH COMP
36	1	11CG415D11	KOBLINGSTROMLE	CLUTCH DRUM
37	1	11GB/T893128	RING 28	
38	1	11GB/T2766202 2RS/P5	KUGLELEJE 6202-2RS/P5	BEARING 6202-2RS/P5
39	1	11GB/T8941	STOP RING 8	STOP RING 8
40	1	11CG305F14-1	HUS	LINKER
41	1	11CG305F14-2	GUMMIBØS	RUBBER COVER
42	2	11GB/T701M5X2 5	SKRUE M5X25	SCREW M5X25
43	2	11GB/T935	SKIVE 5	WASHER 5
44	2	11GB/T9715	SKIVE 5	WASHER 5
45	1	11CG305F14-3	HOLDER B	HOLDER B

POS	QTY	PARTNUMBER	BESKRIVELSE	DESCRIPTION
46	1	11CG305F14-4	HOLDER A	HOLDER A
47	1	11BG415-1	SPÆNDEBÅND	WIRE CLAMP BAND
48	1	5200	LUKSUSSELE F. BUSKRYDDER	Luxury carrying sling
49	6	11GB/T907413M5X25	SKRUE M5X25	SCREW M5X25
50	1	11CG415D-2	BESPÆNDING NEDERST 28MM	CAP LOWER 28MM
51	2	11CG330B-3	GUMMISKIVE	RUBBER WASHER
52	1	11CG415D-3	BESPÆNDING MELLEM 28MM	BRACKET MIDDLE 28MM
53	1	11CG415D2-2	HÅNDTAG CG	HANDLE
54	1	11CG330B-CE3-1	GREB GUMMI	RUBBER COVER
55	1	11CG420-3	BESKYTTELSE FOR KLINGE	
56	1	11CG415D-1	BESPÆNDING ØVERST	CAP UPPER
57	1	11CG4113-1	HÅNDTAG	HANDLE
58	1	11CG260B-CE11	GASHÅNDTAG KPL	LEVER ASSY
59	1	11GB/T846ST29X13	SKRUE ST2.9X13	SCREW ST2.9X13
60	1	11BL7503-9	BØS	BUTTON
61	1	11BL7503-7	FJEDER	SPRING
62	1	11BL7503-8	STIFT	CLOCK PIN
63	1	11BL7503-4	GREB	HANDGRIP
64	1	11BL7503-1	FJEDER	SPRING
65	1	11BL7503-5	HUS HØJRE	BOX RIGHT
66	2	296028	PLADESKRUE M4,2X13 SPIDS	SCREW M4,2X13
67	1	11GB/T701M5X30	SKRUE M5X30	SCREW M5X30
68	1	11CG260B-CE111	KABEL	CABLE
69	1	11BG-328A-2	RØR	TUBE
70	1	11CG328211	STOPKNAP	STOP BUTTON
71	1	11BL7503-3	GREB	GRIB
72	1	11BL7503-2	FJEDER	SPRING
73	1	11BL7503-6	HUS VENSTRE	BOX LEFT
74	1	402981	SNØREHOVED KPL. 8MM	TRIMMERHEAD 8MM
74	1	402982	SNØREHOVED KPL. 10 MM	TRIMMERHEAD 10MM
75	1	11CG305F81	SNØREHOVED HUS	CASE
76	1	11CG305F8-4	MØTRIK 10MM LINKS	NUT 10MM
77	1	11CG305F8-5	SKIVE	WASHER
78	1	11CG305F8-3	FJEDER	SPRING
80	1	11CG305F8-1	SNØRERRULLE	SPOOL
81	1	11CG305F8-1	SNØRERRULLE	SPOOL
82	1	11CG305F8-2	BUND	CUP
83	1	11BG43026-1	BESLAG	BRACKET
84	2	11GB/T907413M5X30	SKRUE M5X30	SCREW M5X30
85	1	11CG42071-1	SKÆRM ØVERST RØD	SAFETY GUARD
86	4	11GB/T90744M5X16	SKRUE M5X16	SCREW M5X16
87	2	296029	PLADESKRUE M4,2X16 SPIDS	SCREW M4,2X16
88	1	11CG420711	SKÆRM NEDERST KPL	GUARD ASSY

POS	QTY	PARTNUMBER	BESKRIVELSE	DESCRIPTION
89	1	11CG420711-2	KNIV	BLADE
90	1	11CG420711	SKÆRM NEDERST KPL	GUARD ASSY