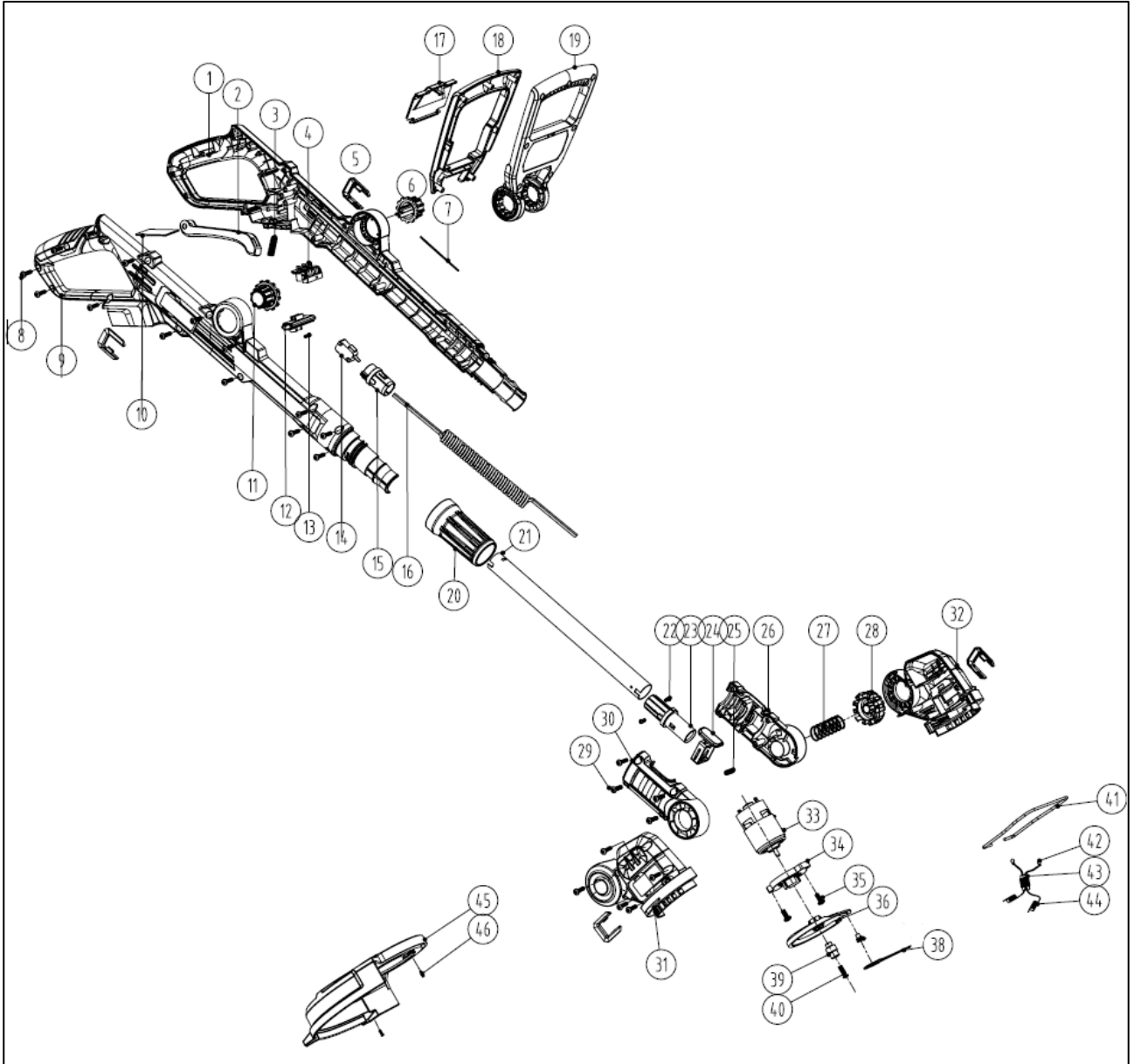


Model: GTX2000

Part number: 90063281

Year:2022



POS	QTY	PARTNUMBER	BESKRIVELSE	DESCRIPTION
1	1	448523	HÅNDTAG VENSTRE	LEFT HANDLE
2	1	448519	KONTAKT	SWITCH TRIGGER
10	1	450054	KABELKLEMME	THE CABLE CLAMP
3	1	448517	LÅSEFJEDER	SWITCH SELF-LOCKING SPRING
4	1	448520	STIK	SOCKET
5	1	448514	PYNTELISTE	U-SHAPED DECORATIVE PIECES
6	1	448524	KNAP	SPIN BUTTON
7	1	448525	LEDNING	INTERNAL WIRE
8	1	448526	SKRUE	INNER PLUM PAN HEAD SELF - TAPPING SCREW
9	1	448527	HÅNDTAG HØJRE	RGHT HANDLE
10	1	448528	BATTERI PLADE	BATTERY PAN
11	1	448529	KNAP	BUTTON
12	1	448516	LÅSEKNAP	ANTI-SELF-LOCKING BUTTON
13	1	448530	FJEDER	SELF-LOCKING PUSH BUTTON SPRING
14	1	448531	KONTAKT	MICRO SWITCH
15	1	448532	BØS	BUSHING
16	1	448533	FJEDER	SPRING WIRE
17	1	448534	COVER HÅNDTAG	COVER OF SUB-HANDLE
18	1	448535	HÅNDTAG UNDERDEL	LOWER PART OF SUB-HANDLE
19	1	448536	HÅNDTAG OVERDEL	UP SUB-HANLE
20	1	448537	STRAMMEKRAVE	SCREWED CONDUIT
21	1	448538	RØR	ALUMINIUM TUBE
22	2	448539	SKRUE	CROSS RECESSED PAN HEAD TAPPING SCREWS
23	1	448540	RØR INDVENDIG	ROLL TUBE
24	1	448541	KONTAKT	SPIN BUTTON
25	1	448542	FJEDER	POSITION BUTTON RETURN SPRING
26	1	448543	ROTOR VENSTRE	LEFT ROTATING ARM
27	1	448544	FJEDER	ANGLE REGULATING SPRING
28	1	448541	KONTAKT	SPIN BUTTON
29	9	448526	SKRUE	INNER PLUM PAN HEAD SELF - TAPPING SCREW
30	1	448545	ROTOR HØJRE	RIGHT ROTATING ARM
31	1	448546	DÆKSEL HØJRE	RIGHT HOUSING
32	1	448547	DÆKSEL VENSTRE	LEFT HOUSING
33	1	448548	MOTOR	755 BRUSH MOTOR
34	1	448549	BØSNING MOTOR	MOTOR SEAT
35	1	448550	SKRUE	CROSS RECESSED TRIPLE SET SCREWS
36	1	432892	KNIV-TALLERKEN M/KNIVHOLDER	BLADE DISC W/BUSHING FOR BLADE
38	1	90070009	PLASTIK KNIVE (12 STK.)	PLASTIC BLADES (12 PCS.)
39	1	448552	KNIVBØS	BUSHING OF BLADE
40	1	448553	BOLT	M5 TOOTH BOLTS
41	1	448554	BØJLE	FLOWER GUARD
42	2	448555	CHIP STIK	104 CERAMIC CHIP CAPACITANCE

POS	QTY	PARTNUMBER	BESKRIVELSE	DESCRIPTION
43	1	448556	SENSOR	ELECTRICAL SENSOR GROUP
44	2	448557	MAGNET	MAGNET INDUCTOR
45	1	448558	BESKYTTELSESSKÆRM	SHIELD
46	2	448559	SKRUE	CROSS PAN HEAD TAPPING SCREWS